



Waters Edge Court, Bow, E3  
London

Offers Over £525,000



## Waters Edge Court, Bow, E3

London

Positioned within the prestigious Waters Edge Court development, this exquisite two-bedroom apartment offers refined, contemporary living in a secure and impeccably maintained setting. Every element has been carefully considered, from the high-specification kitchen with premium appliances to the sophisticated interiors and luxurious finishes throughout.

- Two Bathrooms
- Bright And Spacious Open Plan Concept Living
- Engineered Hardwood Flooring
- Two Bedrooms
- Devons Road DLR Close By
- Waterside Development
- 832 Sq/Ft Internal Living Space
- Fourth Floor Apartment
- 5 Landscaped Roof Terraces With City And Canary Wharf Views
- Chain Free



The apartment features a beautifully presented open-plan living and dining area, generously proportioned and bathed in natural light through expansive windows.

A sleek, high-specification kitchen offers integrated appliances and ample storage, perfectly balancing style and practicality for both everyday living and entertaining. The accommodation comprises two well-appointed bedrooms, including a spacious principal suite and a versatile second bedroom, ideal for guests, a home office, or a child's room. The bathrooms are finished to a high standard, featuring contemporary fixtures and refined, neutral finishes.

The living area extends onto a private balcony overlooking the canal, creating a tranquil outdoor retreat.

Waters Edge Court is an exclusive, well-maintained development set along the peaceful Limehouse Cut canal, offering a secure living environment with convenient access to local amenities and excellent transport links to Stratford, Canary Wharf, and the City of London.

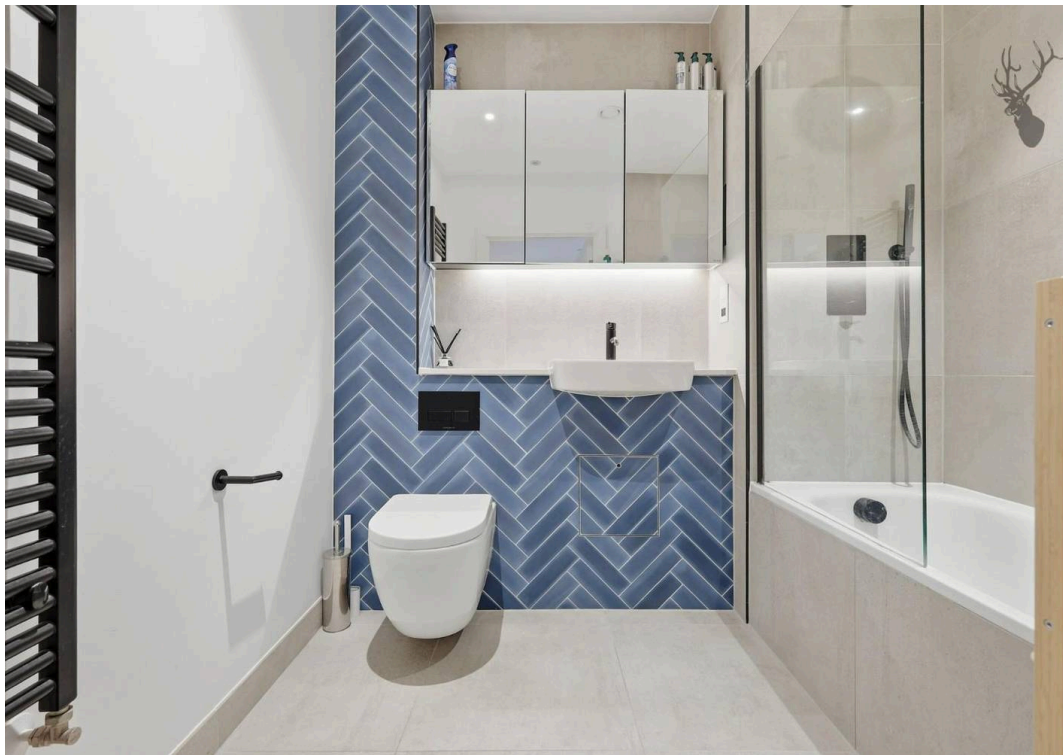
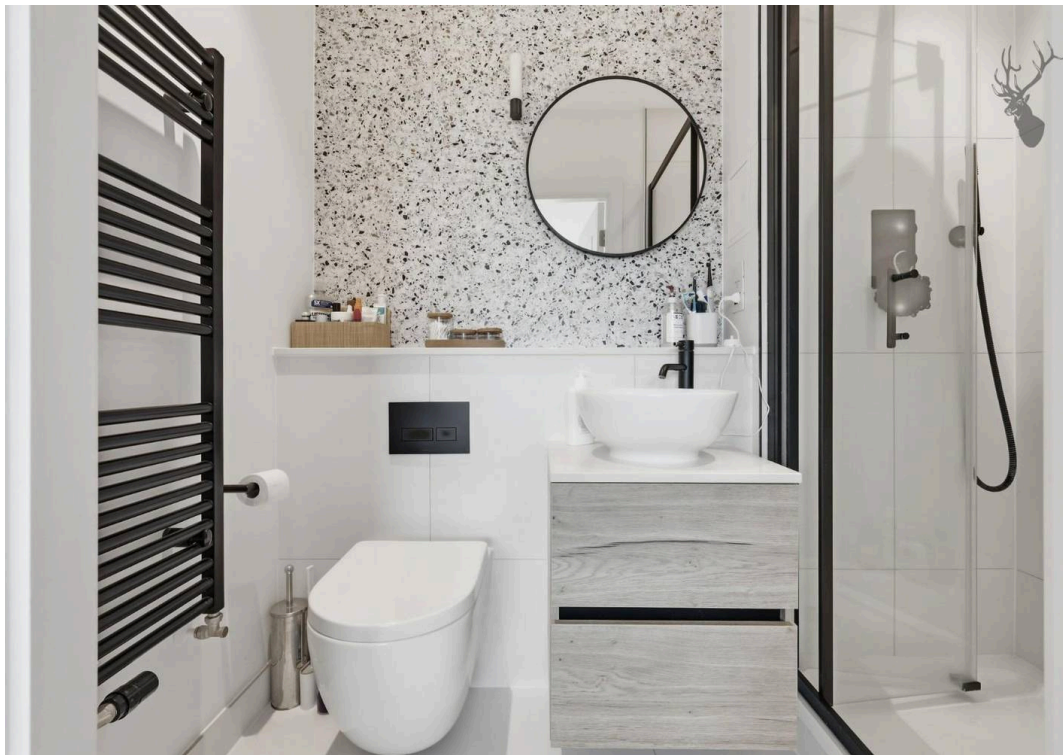
Council Tax band: D

Tenure: Leasehold

EPC Energy Efficiency Rating: B

EPC Environmental Impact Rating: A



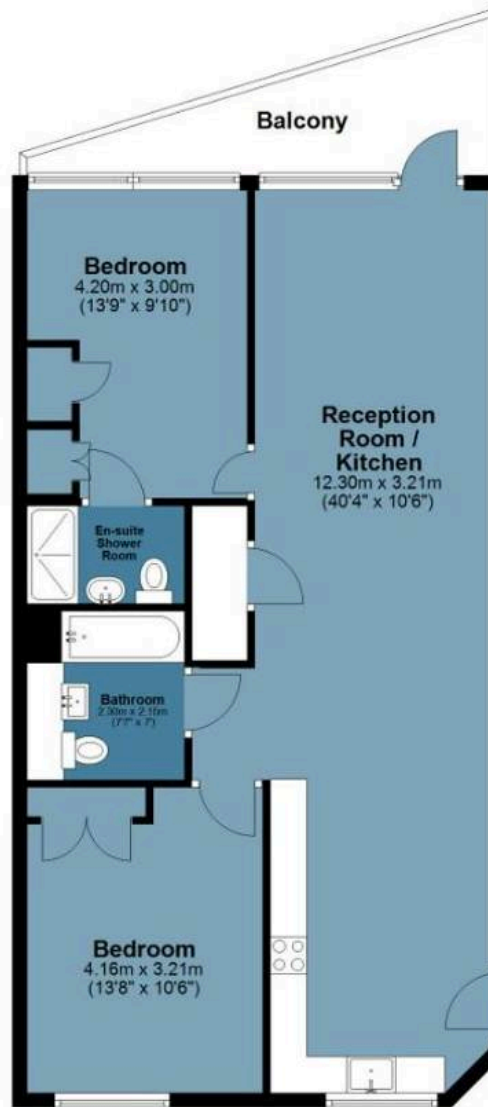






### Fourth Floor

Approx. 77.4 sq. metres (832.8 sq. feet)  
(excluding Balcony)



Total area: approx. 77.4 sq. metres (832.8 sq. feet)

All measurements have been taken as a guide to prospective buyers only and are not precise. This plan is for illustrative purposes only and no responsibility for any error, omission or misstatement. The services, systems and appliances shown have not been tested and no guarantee as to their operability or efficiency can be given. Measurements may have been taken from the widest area and may include wardrobe/cupboard space. No guarantee is given to any measurements including total areas. Buyers are advised to take their own measurements.

© @modephotouk | www.modephoto.co.uk  
Plan produced using PlanUp. □

**Waters Edge Court**

# FROM EAST LONDON ENERGY TO WEST ESSEX EASE

## We Make Moving Home Easy.

At Butler and Stag, we do more than just connect London to West Essex – we make the move seamless. With offices spanning from vibrant East London to the tranquillity of West Essex, we understand the nuances of each area and the journey people take between them. Our marketing goes beyond standard listings, showcasing every property with precision, creativity, and reach that others simply can't match. Coupled with an unparalleled attention to detail, from first enquiry to final move-in, we ensure every client and customer feels informed, supported, and confident. Simply put, we do the little things that make a big difference, setting us apart in every step of the property experience.



LONDON   STRATFORD   SOUTH WOODFORD   BUCKHURST HILL   LOUGHTON   EPPING   BEYOND

# Like what you see? Let's talk

Book your **FREE** valuation now



020 8102 1236

[london@butlerandstag.com](mailto:london@butlerandstag.com)

508 Roman Road, Bow, London, E3 5LU

[butlerandstag.uk](http://butlerandstag.uk)

IMPORTANT NOTICE - These particulars have been prepared in good faith and they are not intended to constitute part of an offer or contract. We have not performed a structural survey on this property and the services, appliances and specific fittings have not been tested. All photographs, measurements, floor plans and distances referred to are given as a guide and should not be relied upon.

BUTLER & STAG

