

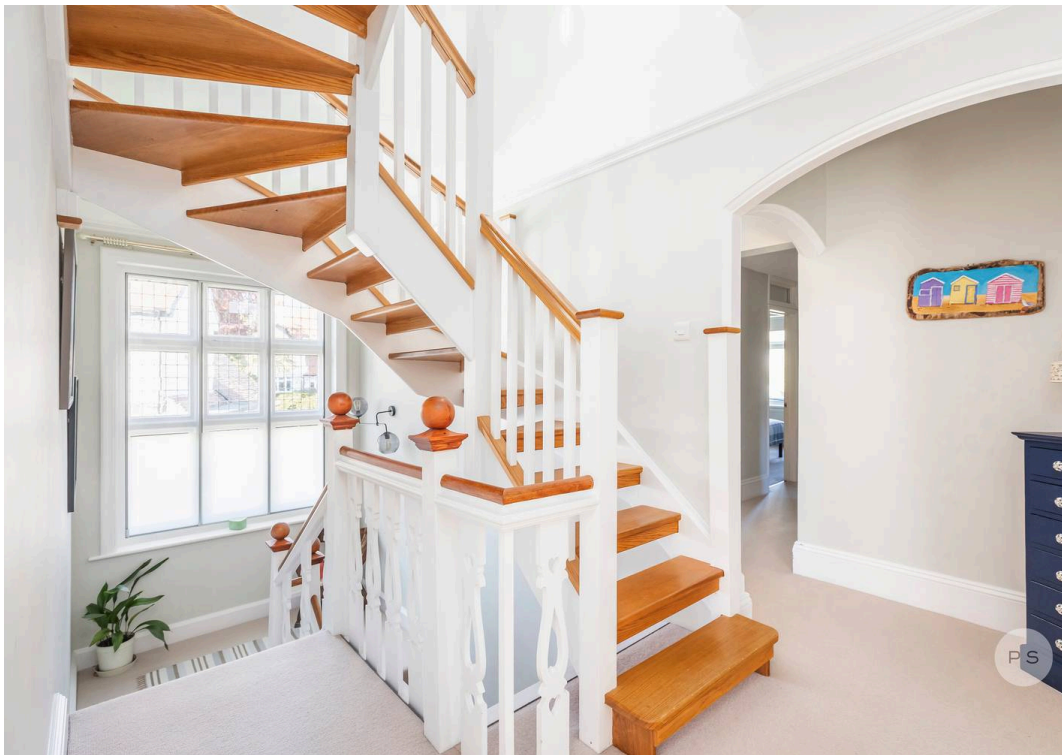
PS



Corriemoor, 30 Westminster Road, Branksome Park, Poole - BH13 6JJ

For Sale £1,499,000

PS



Corriemoor

Branksome Park

Corriemoor is a substantial Arts & Crafts family house of more than 3,600 sq.ft, set within a level, established garden that enjoys a private, sunlit orientation through the day. The house balances period character with a later extension, creating generous and adaptable accommodation across three floors. At its centre sits a kitchen dining space anchored by an Aga, flowing naturally into a sun room and garden beyond, shaping the rhythm of daily life. The proportions are notable, particularly within the principal rooms and upper level, where flexibility allows for multi generational living, a nanny or more informal uses.

- Circa. 500 metres to Branksome Chine Beach
- Arts & Crafts style detached house in established residential setting
- Five double bedrooms & five bath or shower rooms
- Level, mature garden with private sunlit orientation
- Two principal reception rooms plus study
- Kitchen dining day room centred around Aga
- Sun room/games room opening onto the garden terrace
- Principal bedroom suite with dressing room and ensuite
- Top floor providing flexible additional accommodation
- Gated frontage with hardstanding for boat or vehicles
- Summer house, garden store and utility or boot room
- Internal floor area 338 sq.m / 3,635 sq.ft
- Council Tax Band G £3,999.98
- EPC Rating D
- Tenure Freehold



A practical covered entrance leads into a welcoming lobby and central hallway, where exposed timber flooring and a sense of width set the tone, a scale rarely found in an urban setting and more akin to that of a country house. From here the principal rooms unfold with clarity. A study with fireplace sits to one side, equally suited as a playroom, while the formal sitting room and separate lounge both feature deep bay windows, high ceilings and period detailing, including coving and fireplaces, one with a wood burner. To the rear, the kitchen dining room forms the social core of the house with a central island and Aga, and linking through into a sun room or games room with garden access. A well fitted utility room provides practical solutions and secondary access to the garden. Upstairs, the first floor is arranged around a generous landing. The principal bedroom suite has a sense of scale with a bay window overlooking the garden, a walk in dressing room and a fully tiled ensuite. Additional bedrooms on this level are well proportioned doubles, all with ensuites. The second floor extends the accommodation further with two large rooms and a central shower room, offering flexibility for guests, older children, a nanny or alternative uses such as a media space.

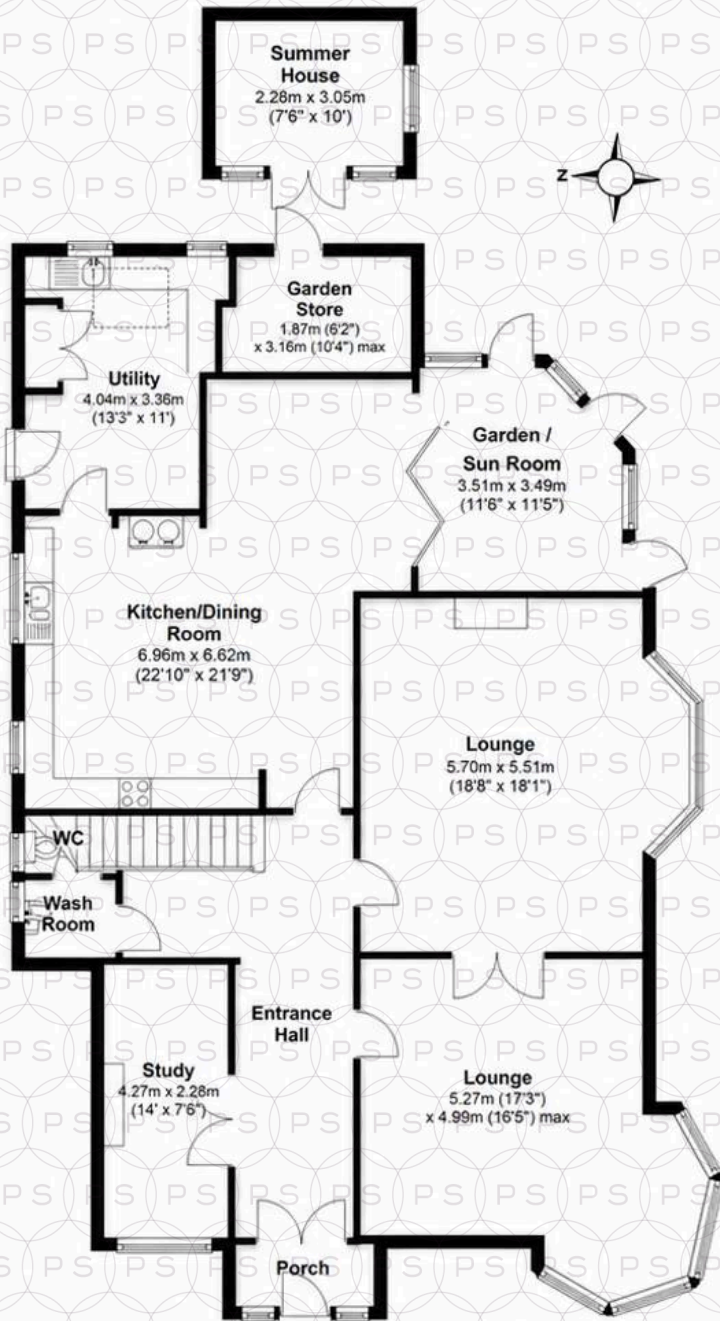
The garden unfolds around the house, creating a natural buffer from the outside world and bringing a constant sense of green outlook and calm into the interior. From almost every room, there is a connection to planting, sky and seasonal colour. A paved terrace leading off the kitchen / sun room is ideal for relaxed alfresco dining, and a summer house and garden store offer additional flexibility, while gated access leads to a driveway and hardstanding suited to larger vehicles or a boat.

LOCATION:

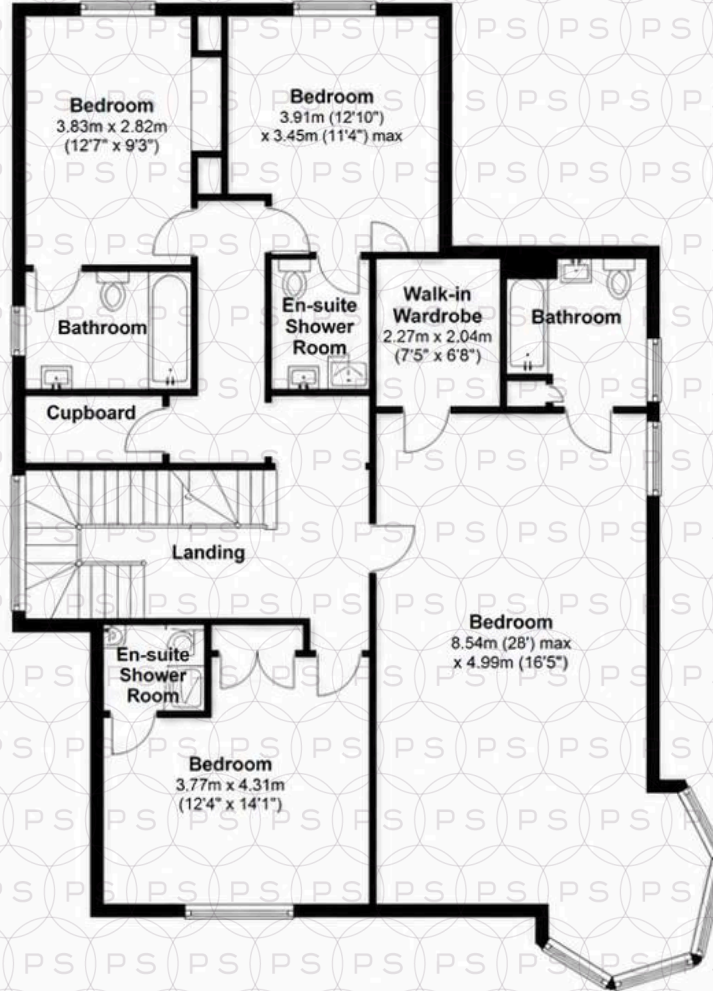
Corriemoor sits within a highly desirably leafy residential setting, with an easy scenic route to the beach at Branksome Chine approx. 500m away. Close to everyday amenities with Westbourne & Canford Cliffs Villages each approx 1.5km away, known for their independent cafés, restaurants, boutiques, libraries, post offices and bars. Branksome Railway station is nearby providing a direct service to London Waterloo in around two hours. The wider area offers access to Poole Harbour, Sandbanks and a variety of water based and coastal activities, reinforcing the appeal for family life to evolve through the years.



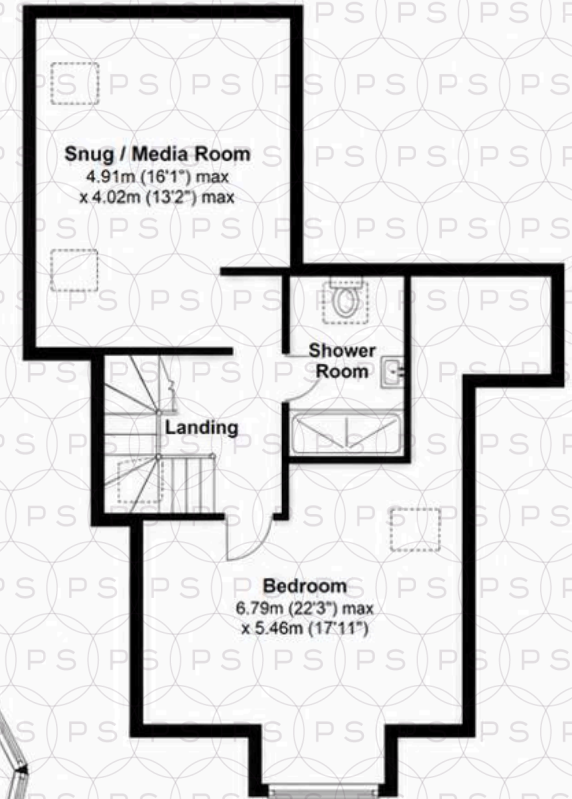
Ground Floor



First Floor



Second Floor



Total area: approx. 337.7 sq. metres (3635.4 sq. feet)

Bournemouth Energy Floor Plans are provided for illustration/identifi purposes only. Not drawn to scale, unless stated and accept no responsibility for any error, omission or mis-statement. Dimensions shown are to the nearest 7.5 cm / 3 inches. Total approx area shown on the plan may include any external terraces, balconies and other external areas. Plan produced using PlanUp.

30 Westminster Road, -



Philippa Sole Ltd

Philippa Sole 3A Springfield Road, Ashley Cross - BH14 0LG

01202 747999 • enquiries@philippasole.co.uk • www.philippasole.co.uk

All statements in these particulars are made without responsibility on the part of Philippa Sole Ltd or the vendor. Neither Philippa Sole Ltd nor anyone in its employment or acting on its behalf has the authority to make any representation or warranty in relation to this property, detailed survey or tested services and fittings. Room sizes are approximate.