

BUTLER & STAG

Furlong Court, Bow, E3
London

£350,000



Furlong Court, Bow, E3

London

Asking Price: £350,000 Beautifully presented and fully modernised throughout, this stunning one-bedroom, one-bathroom apartment is offered in excellent condition and provides contemporary living in a highly desirable setting.

- Private Balcony
- Immaculate Condition
- Open-Plan Living & Kitchen Area
- Modern Kitchen & Bathroom
- Communal Terrace
- Built-In Storage
- Canary Wharf Views
- Great Transport Links



The property features a bright and spacious open-plan living and kitchen area, creating an ideal space for both relaxing and entertaining. The stylish modern kitchen has been finished to a high standard with contemporary fittings and integrated features, while the bathroom has also been fully upgraded with a sleek, modern design.

The generously sized bedroom benefits from built-in wardrobes, offering excellent storage solutions, and the property further benefits from a private balcony providing valuable outdoor space.

Finished to an exceptional standard throughout, this turnkey home is ideal for first-time buyers, professionals, or investors seeking a modern property ready to move straight into.

Council Tax band: C

Tenure: Leasehold

EPC Energy Efficiency Rating: B

EPC Environmental Impact Rating: A





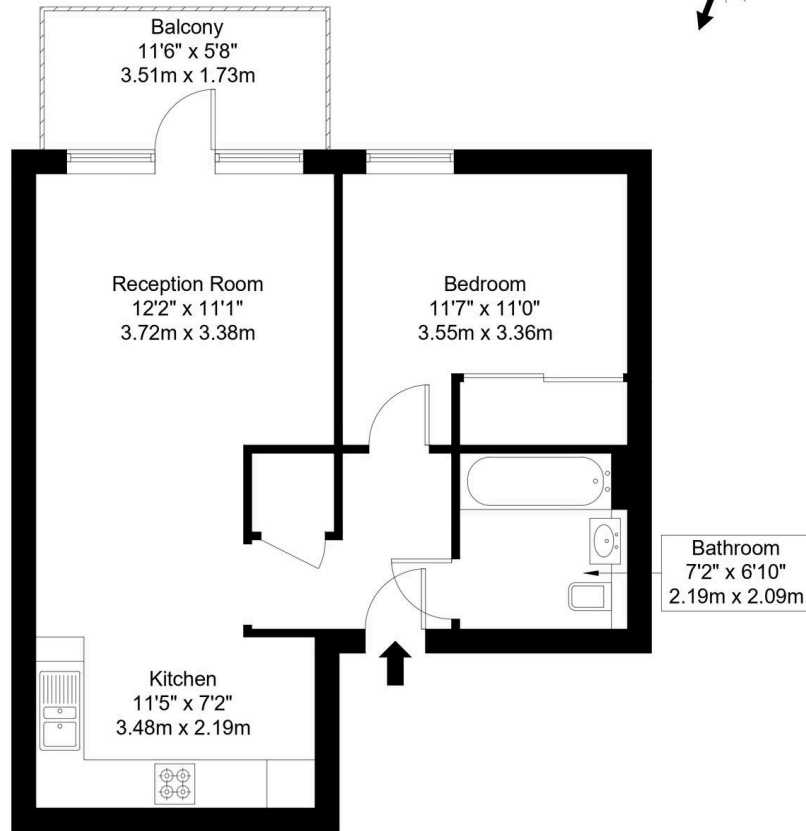
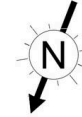


St. Pauls Way, E3 4YL

Approx Gross Internal Area = 49.6 sq m / 534 sq ft

Balcony = 6.1 sq m / 66 sq ft

Total = 55.7 sq m / 600 sq ft



Second Floor

Ref :

Copyright **BLEU
PLAN**

The Floor plan is not to scale and measurements and areas shown are approximate and therefore should be used for illustrative purposes only. The plan has been prepared in accordance with the RICS code of Measuring Practice and whilst we have confidence in the information produced it must not be relied on. Maximum lengths and widths are represented on the floor plan. If there is any aspect of particular importance, you should carry out or commission your own inspection of the property.
Copyright @ BleuPlan

FROM EAST LONDON ENERGY TO WEST ESSEX EASE

We Make Moving Home Easy.

At Butler and Stag, we do more than just connect London to West Essex – we make the move seamless. With offices spanning from vibrant East London to the tranquillity of West Essex, we understand the nuances of each area and the journey people take between them. Our marketing goes beyond standard listings, showcasing every property with precision, creativity, and reach that others simply can't match. Coupled with an unparalleled attention to detail, from first enquiry to final move-in, we ensure every client and customer feels informed, supported, and confident. Simply put, we do the little things that make a big difference, setting us apart in every step of the property experience.



LONDON STRATFORD SOUTH WOODFORD BUCKHURST HILL LOUGHTON EPPING BEYOND

Like what you see? Let's talk

Book your **FREE** valuation now



020 8102 1236

london@butlerandstag.com

508 Roman Road, Bow, London, E3 5LU

butlerandstag.uk

IMPORTANT NOTICE - These particulars have been prepared in good faith and they are not intended to constitute part of an offer or contract. We have not performed a structural survey on this property and the services, appliances and specific fittings have not been tested. All photographs, measurements, floor plans and distances referred to are given as a guide and should not be relied upon.

BUTLER & STAG

