



6 Holdbrook, Hitchin

Hitchin

£1,300 pcm



6 Holdbrook

Hitchin

Modern two-bedroom maisonette with spacious living room, fitted kitchen, stylish bathroom, gas central heating, private garden, and convenient location near amenities and transport.

Council Tax band: B

Tenure: Leasehold

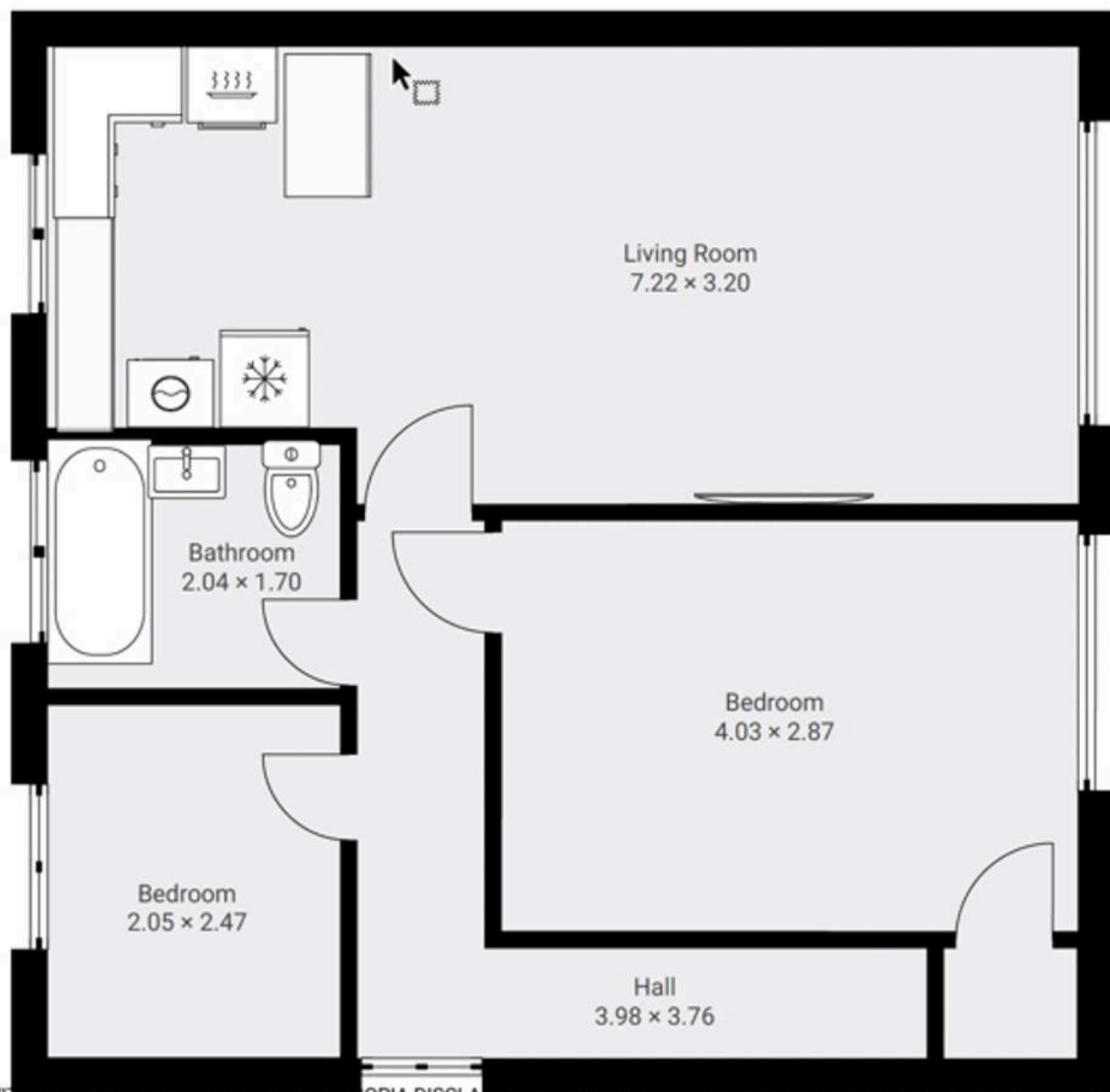
EPC Energy Efficiency Rating: C

EPC Environmental Impact Rating: C

- Two Bedroom Maisonette
- Private rear Garden
- Gas central heating
- Well presented throughout



▼ 1st Floor



THIS FLOOR PLAN IS PROVIDED WITHOUT WARRANTY OF ANY KIND. SENSOPIA DISCLAIMS ANY WARRANTY INCLUDING, WITHOUT LIMITATION, SATISFACTORY QUALITY OR ACCURACY OF DIMENSIONS.



Putterills Lettings

Hill House 1 St. Albans Road, Codicote,, Hitchin - SG4 8UT

01462 419333 • lettings@putterills.co.uk • www.putterills.co.uk/