



HARRISON  
Sales &  
Lettings  
HARDENSON

Oxford Street, Moreton-In-Marsh



This spacious, two-bedroom, ground floor apartment in a Grade II listed building, offers a superb opportunity for first-time buyers and investors alike. Available with no onward chain offering a smooth and swift purchase.

The property features two generously sized double bedrooms, providing ample space for residents or tenants. The open plan kitchen and dining area creates a bright and sociable living environment, perfect for modern lifestyles.

Situated in a highly sought-after central location, this apartment is just a walk away from the High Street, with its range of shops, cafes, and local amenities.

The train station is also within close proximity, offering direct links to both London and Oxford, making this an excellent choice for commuters.

Residents benefit from access to a communal courtyard, providing a pleasant outdoor space for relaxing. With excellent transport links, a vibrant local community, and all essential amenities close at hand, this property is a must-see. The property is ideally suited as an investment, with a potential rental value between £900 and £1200 per calendar month.

Tenure: We believe the property to be **Leasehold**. We believe the length of the lease is 998 years. There is no Ground rent for this property. Potential purchasers should obtain confirmation of this from their solicitor prior to exchange of contracts.

Council Tax Band: C

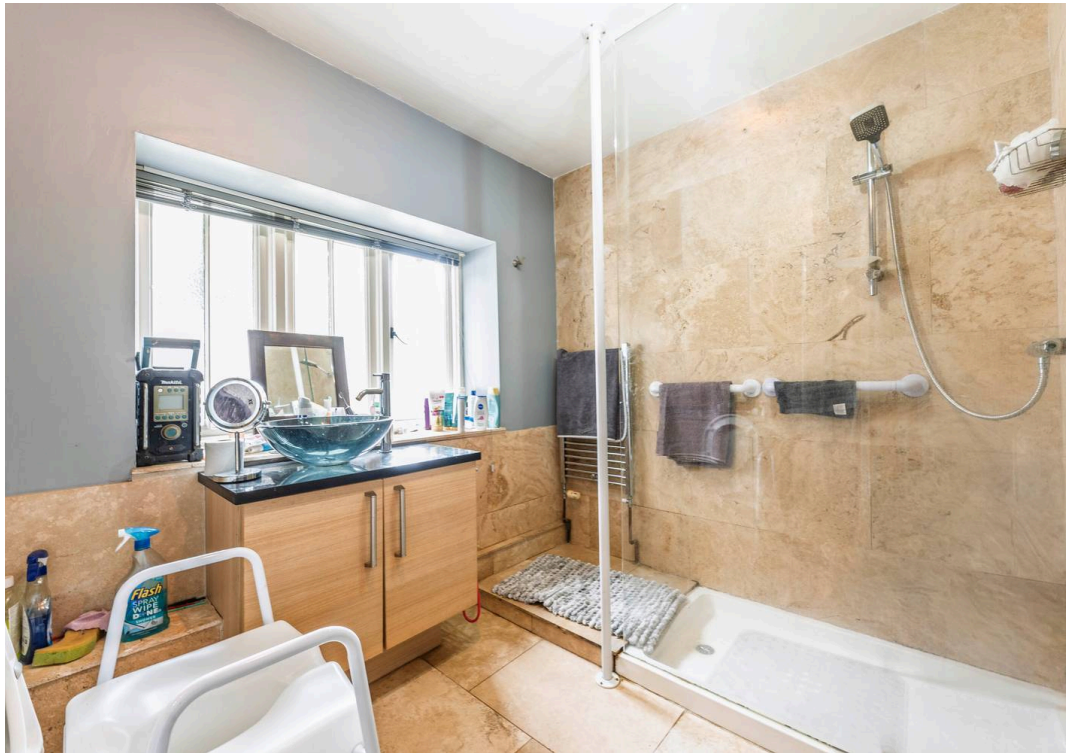
EPC: D

Service Charge: Approx. £125 per month.

What3Words: [///playfully.mainland.storm](https://www.what3words.com/#!/playfully.mainland.storm)

*\*Please note; there is no parking with this property*





Main House Approx. Gross Internal Area:- 60.96 sq.m. 656 sq.ft.



FOR ILLUSTRATIVE PURPOSES ONLY-NOT TO SCALE  
The position & size of doors, windows, appliances and other features are approximate only.  
☐☐☐ Denotes restricted head height  
[www.dmlphotography.co.uk](http://www.dmlphotography.co.uk)