



25 Cliff End, Purley

£600,000 Freehold



haboodle

Tucked away on a beautiful, quiet residential cul-de-sac, we have a semi-detached home with far-reaching views over its south-west-facing garden and the valley below.

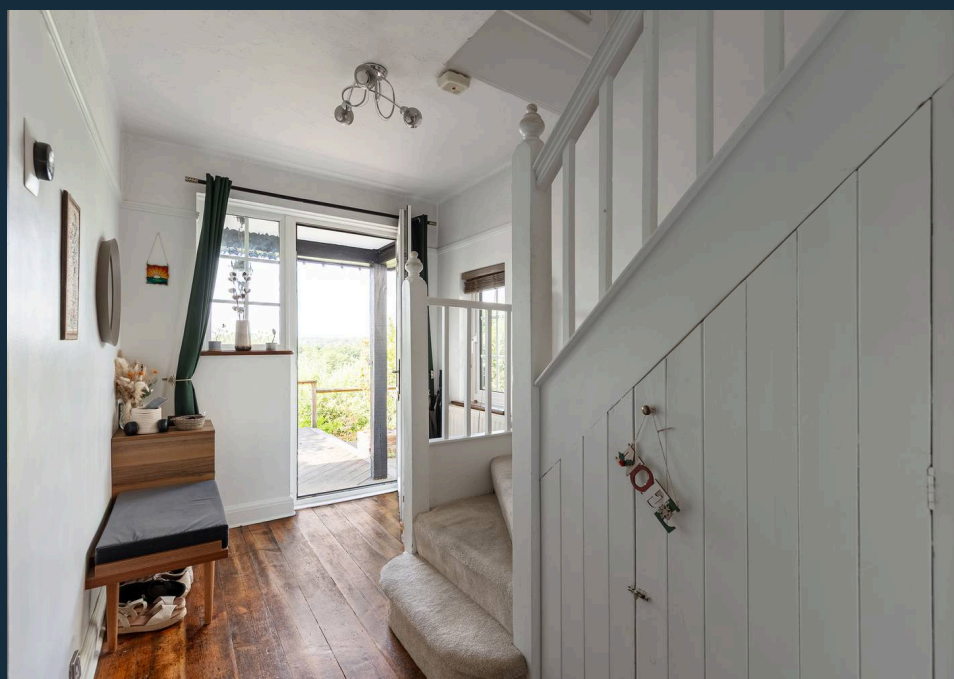
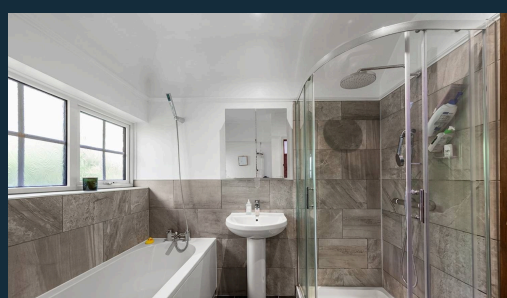
The property has been cleverly extended to create a really well-balanced family home. To the front, there is a large kitchen, with a separate dining space positioned just off it, giving the ground floor a practical layout that works well for day-to-day family life and entertaining. To the rear, the living room is a real standout, with large windows framing the garden and the open outlook beyond. It is a calm, bright space, made even better by the south-westerly aspect.

Upstairs, there are three well-proportioned bedrooms and a family bathroom, complete with both a bath and a separate shower. The layout is simple, usable and exactly what many families are looking for.

Outside, the rear garden is a good size, with a large decked area that enjoys the same south-west-facing aspect and elevated views. There is



- › Three-Bedroom Semi-Detached House
- › Beautiful Quiet Cul-De-Sac Location
- › Incredible Views Over The Valley
- › South-West-Facing Rear Garden
- › Cleverly Extended Family Home
- › Large Kitchen And Separate Dining Space
- › Bright Living Room With Garden Views
- › Family Bathroom With Bath And Shower
- › Garage
- › Large Garden Room / Home Office / Gym Potential

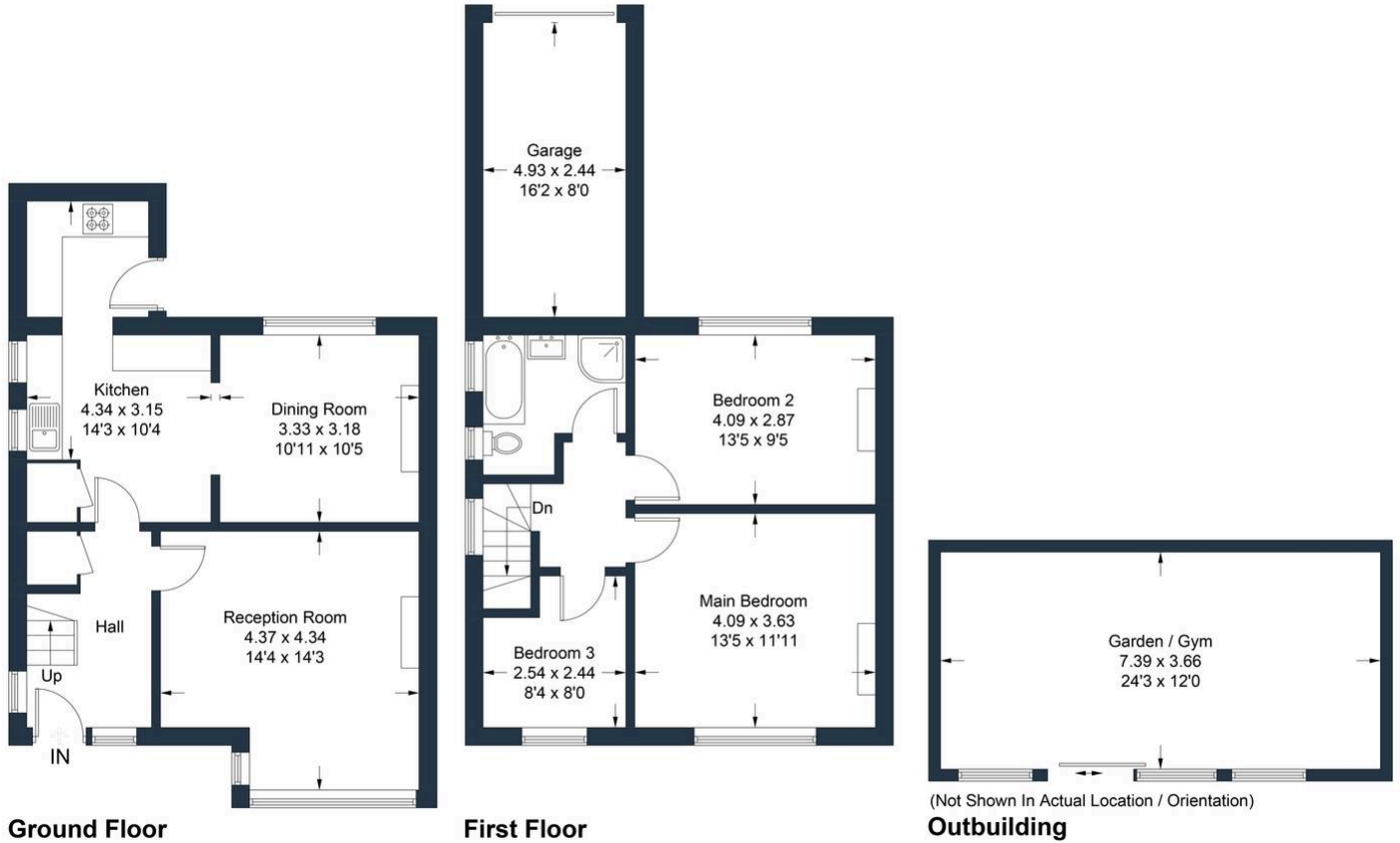


Cliff End, Purley - CR8 1BP

Approximate Gross Internal Area = 109.2 sq m / 1174.8 sq ft

Outbuilding = 24.4 sq m / 262.8 sq ft

Total = 133.6 sq m / 1437.6 sq ft



Ground Floor

First Floor

Outbuilding

Illustration for identification purposes only, measurements are approximate, not to scale. Produced by Haboodle Estate Agents (ID1306326)



haboodle