



18 Pembroke Crescent, Hove BN3 5DD
£1,900 pcm

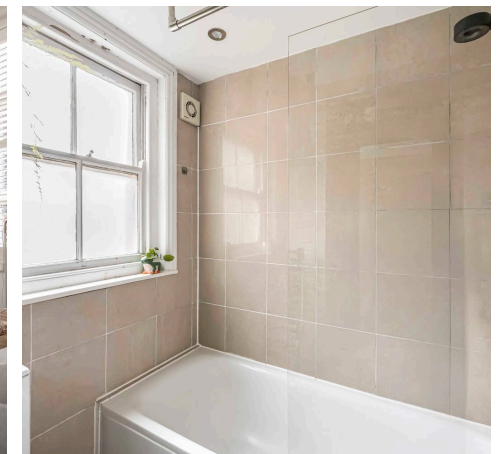
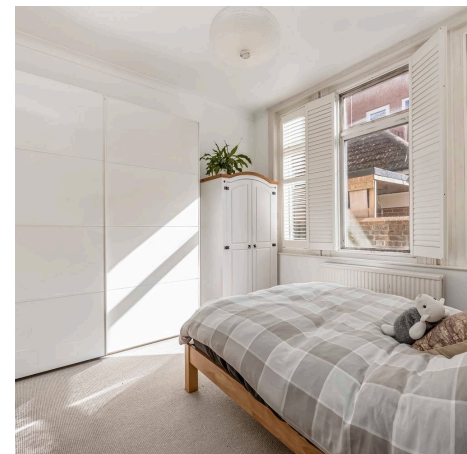
MANSELL
McTAGGART
Trusted since 1947

18 Pembroke Crescent

Hove

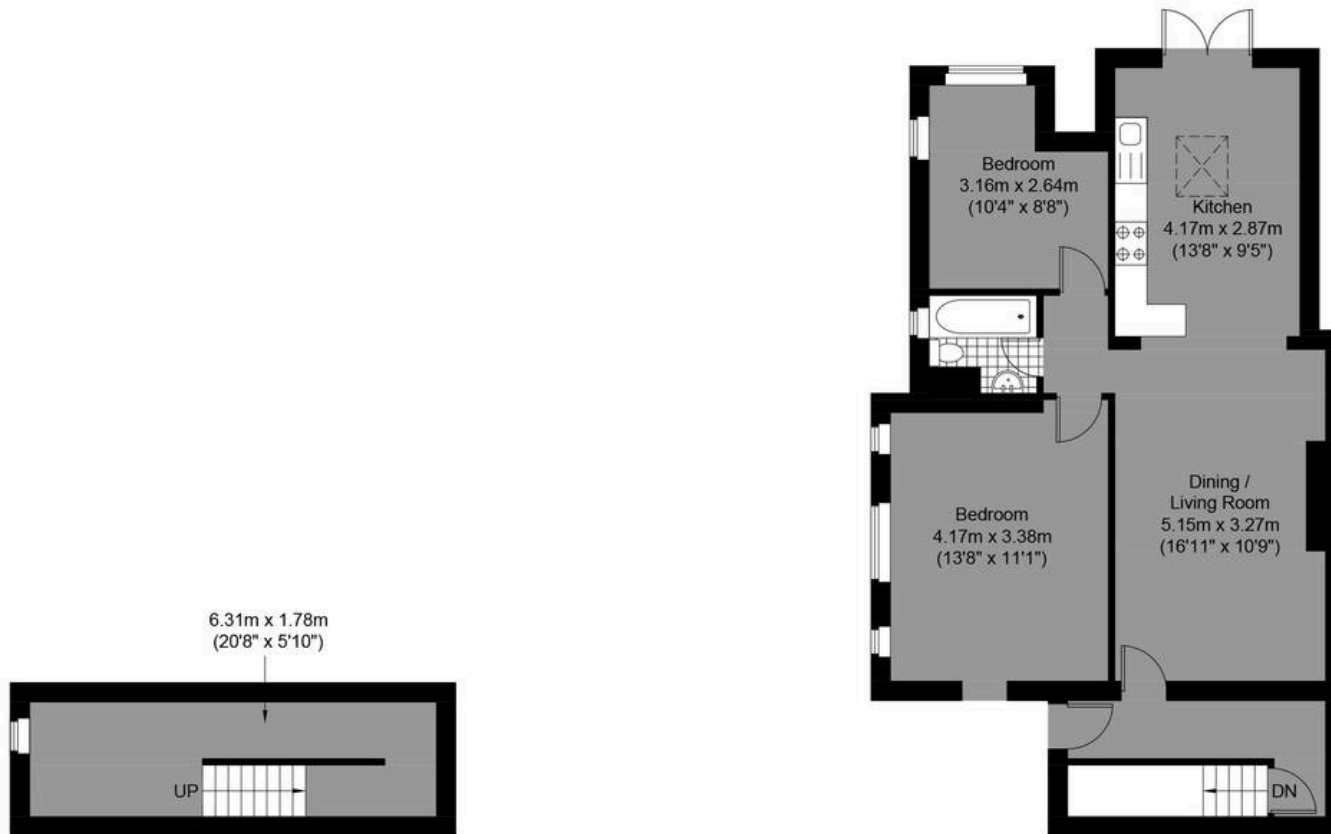
Council Tax band: TBD

- SPACIOUS TWO BEDROOM GARDEN FLAT
- LOUNGE/DINER
- MODERN FITTED KITCHEN
- PRINCIPAL BEDROOM WITH FITTED WARDROBES
- SECOND DOUBLE BEDROOM
- MODERN BATHROOM WITH SHOWER OVER THE BATH
- LARGE PRIVATE REAR GARDEN



Approximate Gross Internal Area (Excluding Outbuilding) = 76.90 sq m / 827.73 sq ft

**MANSELL
McTAGGART**
— Trusted since 1947 —



Pembroke Crescent

Basement
Approximate Floor Area
120.87 sq ft (11.23 sq m)



Ground Floor
Approximate Floor Area
706.86 sq ft (65.67 sq m)

Illustration for identification purposes only, measurements are approximate, not to scale.

© Mansell McTaggart



Mansell McTaggart Brighton & Hove

Mansell McTaggart, 138 Old London Road - BN1 8YA

01273 508955

patcham@mansellmctaggart.co.uk

www.mansellmctaggart.co.uk/branch/brighton

