



The Lock Building, Stratford, E15  
London

£240,000



## The Lock Building, London

Asking Price: £240,000 Stylish modern apartment set within the sought-after Lock Building, ideally located on Stratford High Street with excellent transport links and contemporary canal-side living.

- Modern apartment in the sought-after Lock Building
- Bright and spacious open-plan living area
- Contemporary fitted kitchen with integrated appliances
- Stylish modern bathroom suite
- Large windows providing excellent natural light
- Canal-side location with scenic waterside walks
- Moments from Westfield Stratford City
- Close to Queen Elizabeth Olympic Park
- Excellent transport links from Stratford Station
- Located in a popular East London location



Set within the popular Lock Building development on Stratford High Street, this stylish and contemporary apartment offers modern living in a prime East London location. Finished to a high standard throughout, the property features a bright open-plan living and dining area, a sleek fitted kitchen with integrated appliances, spacious double bedroom, and a modern bathroom suite. Large windows allow for an abundance of natural light, creating a bright and welcoming atmosphere throughout the home.

Perfectly positioned close to the beautiful canal pathways and waterside walks, the apartment offers a peaceful setting while remaining moments from the vibrant heart of Stratford. Residents can enjoy easy access to the Queen Elizabeth Olympic Park, offering acres of green space, world-class sporting facilities, cafés, and riverside scenery. Westfield Stratford City is also nearby, providing an extensive selection of shops, restaurants, bars, and entertainment options.

The property further benefits from exceptional transport connections via Stratford Station, including Underground, DLR, Elizabeth Line, and National Rail services, making commuting into Central London and beyond fast and convenient. Ideal for first-time buyers, professionals, or investors alike.

Council Tax band: C

Tenure: Leasehold

EPC Energy Efficiency Rating: B

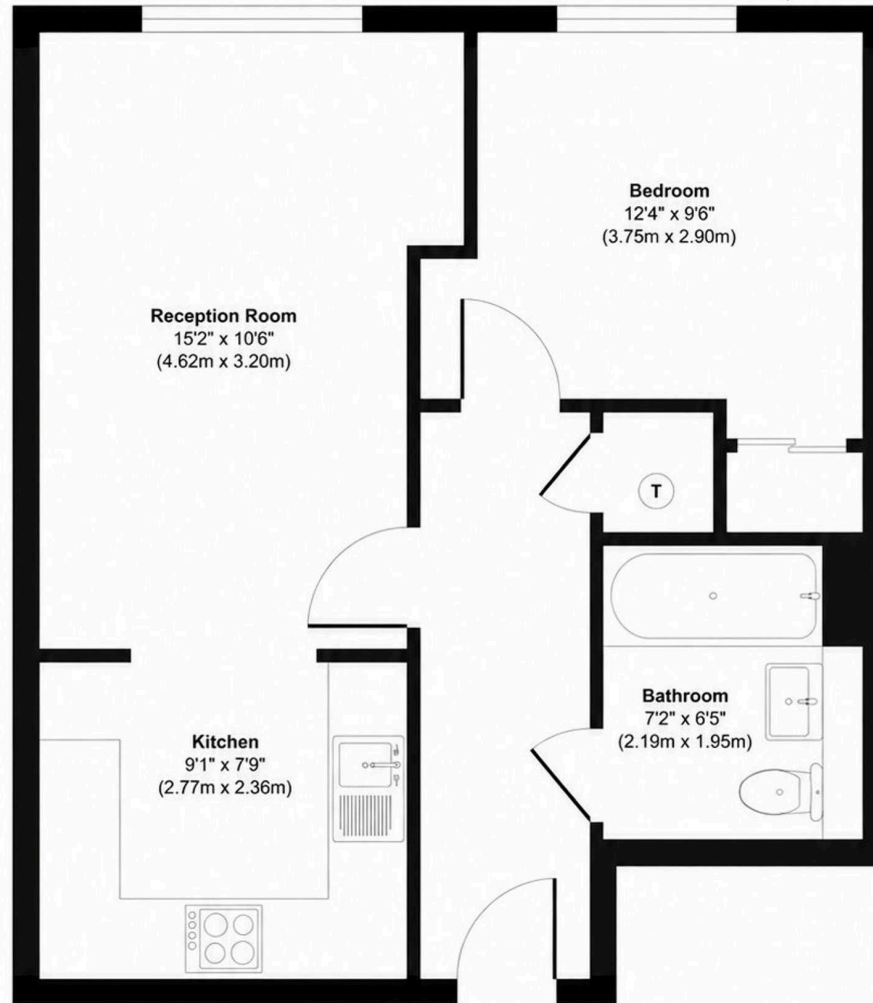
EPC Environmental Impact Rating: C







# The Lock Building



**Second Floor**  
Approximate Floor Area  
450 sq. ft  
(41.76 sq. m)

**Approx. Gross Internal Floor Area 450 sq. ft / 41.76 sq. m**  
Illustration for identification purposes only, measurements are approximate, not to scale.

# FROM EAST LONDON ENERGY TO WEST ESSEX EASE

## We Make Moving Home Easy.

At Butler and Stag, we do more than just connect London to West Essex – we make the move seamless. With offices spanning from vibrant East London to the tranquillity of West Essex, we understand the nuances of each area and the journey people take between them. Our marketing goes beyond standard listings, showcasing every property with precision, creativity, and reach that others simply can't match. Coupled with an unparalleled attention to detail, from first enquiry to final move-in, we ensure every client and customer feels informed, supported, and confident. Simply put, we do the little things that make a big difference, setting us apart in every step of the property experience.



LONDON   STRATFORD   SOUTH WOODFORD   BUCKHURST HILL   LOUGHTON   EPPING   BEYOND

# Like what you see? Let's talk

Book your **FREE** valuation now



020 8102 1236

[london@butlerandstag.com](mailto:london@butlerandstag.com)

508 Roman Road, Bow, London, E3 5LU

[butlerandstag.uk](http://butlerandstag.uk)

IMPORTANT NOTICE - These particulars have been prepared in good faith and they are not intended to constitute part of an offer or contract. We have not performed a structural survey on this property and the services, appliances and specific fittings have not been tested. All photographs, measurements, floor plans and distances referred to are given as a guide and should not be relied upon.

BUTLER & STAG

