



Tudor Drive, Kingston Upon Thames, KT2

Approximate Area = 834 sq ft / 77.4 sq m

Garage = 163 sq ft / 15.1 sq m

Shed = 37 sq ft / 3.4 sq m

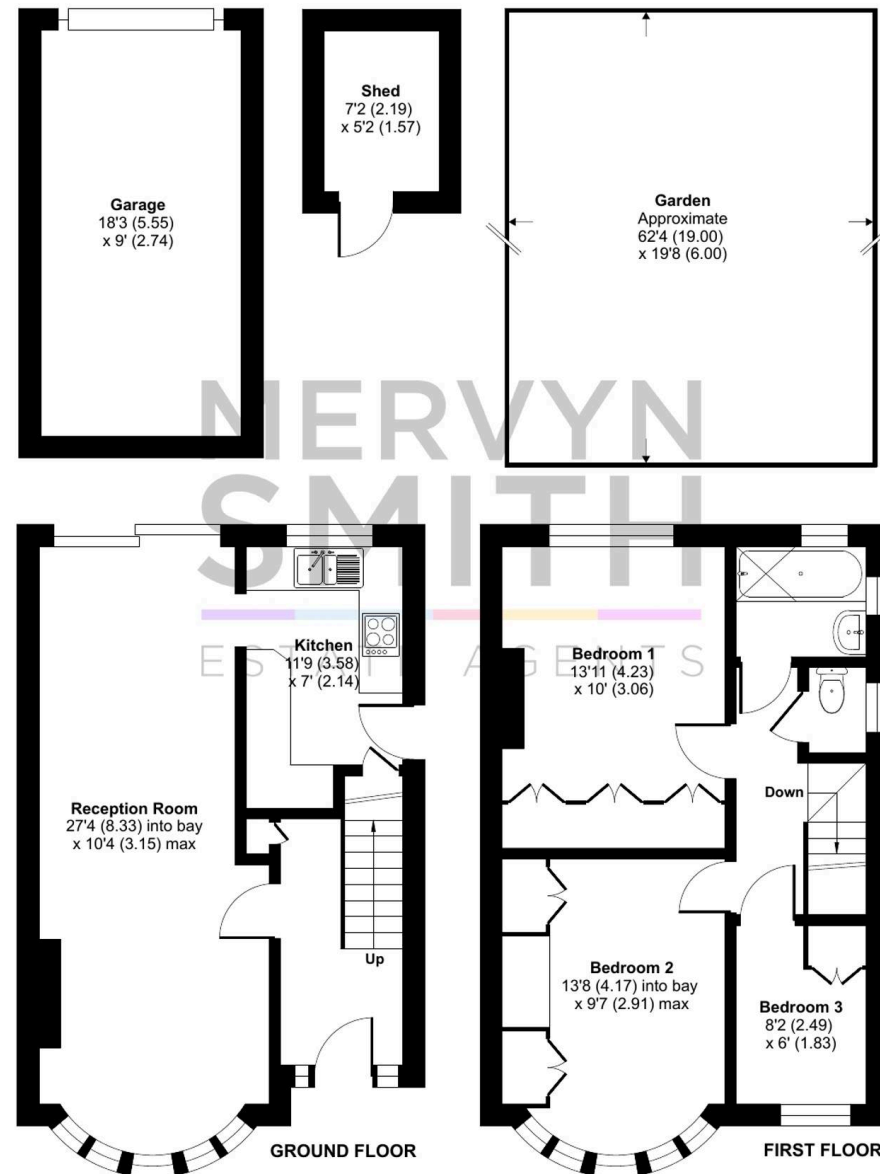
Total = 1034 sq ft / 95.9 sq m

For identification only - Not to scale

- 3 Bedroom 1930s Semi Detached House with a Garage and sunny South-Westerly facing garden in popular North Kingston.
- VACANT POSSESSION and NO CHAIN!
- Bright double aspect through lounge/dining room over 27 ft with front bow window and rear sliding doors out to the garden.
- Fitted wardrobe cupboards to both main bedrooms : Double aspect bathroom and separate WC.
- Potential for rear and loft extensions.
- Need some upgrading but has a new roof and is double glazed throughout.
- Please note the main improvement required is to install a central heating system which would also substantially upgrade the EPC rating.
- Close to Latchmere and St Agathas Schools. Moments from buses to Richmond, Kingston and Norbiton station. The local library, shops and Post Office are just further along the road.

Council Tax band: E

Tenure: Freehold





Porch

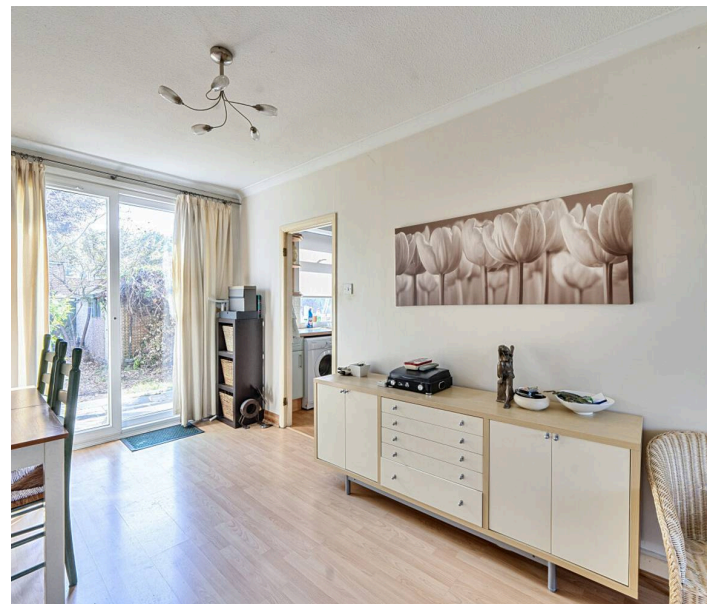
Covered front entrance.

Hall

Carolina style entrance door with double glazed frosted windows to each side, laminate flooring, wall mounted convector heater, frosted double glazed side window, understair store cupboard, recess with base level shoe cupboard, door to cloaks cupboard with hanging rail and storage over.

Through lounge/dining room

Stone effect fireplace, double glazed bow window to front, laminate flooring, fitted shelving, coving, double glazed sliding patio doors out to garden.



Kitchen

Units fitted at eye and base level, worktops, tile splashback, inset one and a half bowl sink unit, double glazed window to garden inset gas hob with fitted convector heater over, double electric ovens below, space and plumbing for washing machine, doors to pantry cupboard, double glazed side door to side passageway.





1st floor landing

Staircase from hall to 1st floor landing with balustrade, frosted double glazed side window, trap door to loft.

Front Bedroom

Laminate flooring, double glazed bow window to front, coving, twin double doors to inbuilt wardrobe cupboards with dressing table/Tv plinth between, 3 eye level storage cupboards over.

Rear Bedroom

Laminate floor, double glazed window to rear, coving, 3 double doors to inbuilt wardrobe cupboards with storage cupboards above.

Bedroom 3

Double glazed window to front, fitted shelving, double doors to fitted wardrobe with hanging rail and shelving.

Bathroom

Double aspect with frosted double glazed windows, pedestal wash hand basin, convector heater, bath with shower over, shower rail and curtain, wall mounted medicine cupboard, laminate flooring, multipoint gas water heater.

Separate Cloakroom

WC, double glazed frosted window.



Front Garden

Wrought iron gate, front hedge screen, lawn and borers, side gate to side access passage.

Rear Garden

Sunny south west facing with crazy paved patio to immediate rear of house outside tap, garden shed, rear access gate.

Garage

Personal door to garden, rear up and over door for vehicle access.







Mervyn Smith

315 Richmond Road, Kingston Upon Thames - KT2 5QU

020 8549 5099 • mail@mervynsmith.co.uk • <http://www.mervynsmith.co.uk/>

This document is for informational purposes only and does not constitute legal or financial advice. While we strive to ensure accuracy, we do not accept liability for errors or omissions. Buyers and sellers should seek independent professional advice before making any decisions. Property details are subject to change and should be independently verified.