



Rhondda Grove, Bow

London

£900,000



Ground Floor Flat

14 Rhondda Grove, London

Located within Bow's prestigious Tredegar Square Conservation area is this exquisite Georgian residence.

- Two Bathrooms
- Spectacular Finish
- Two Bedroom Georgian Apartment
- Tree Lined Turning
- Period Features Throughout
- Stunning Example of a Period Property
- West Facing Balcony
- Arranged Over Two Floors
- Moments Walk to Mile End Tube Station
- Designer Kitchen



Occupied on the raised ground and first floor the property is bathed in natural light due the multi paned sash windows and French doors that lead to an oversized west facing balcony which is great for entertaining and alfresco dining.

The property has been sympathetically refurbished by the current landlord and hosts a wealth of period features coupled with modern interiors giving the new prospective buyers a wonderful setting to lavishly enjoy.

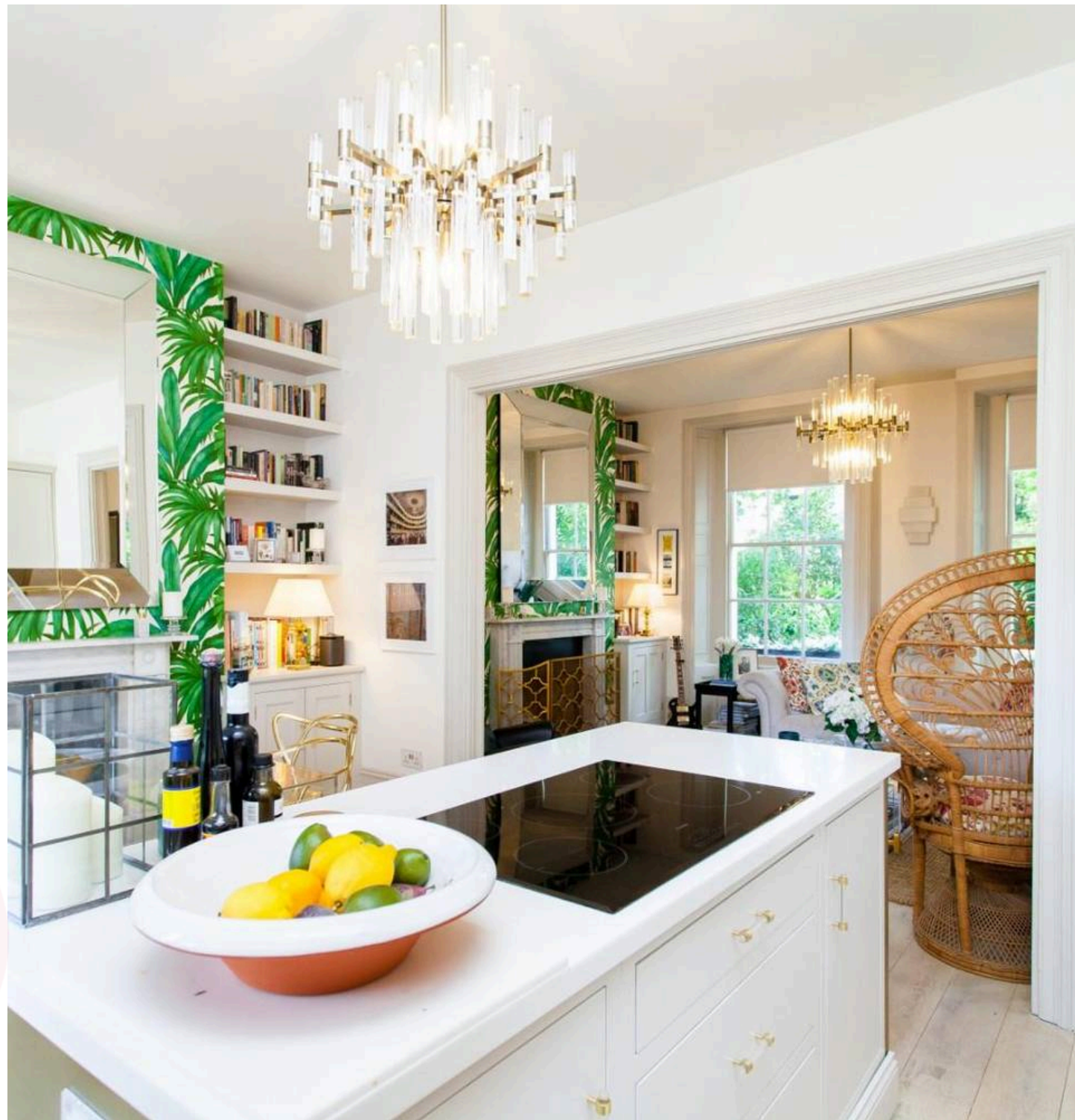
The tree lined turning of Rhondda Grove is well located for various transport links, including Mile End underground (Central, District and Hammersmith & City) Bow Road (District and Hammersmith & City) and Bow Church DLR all of which are a moments' walk away providing quick access to the City.

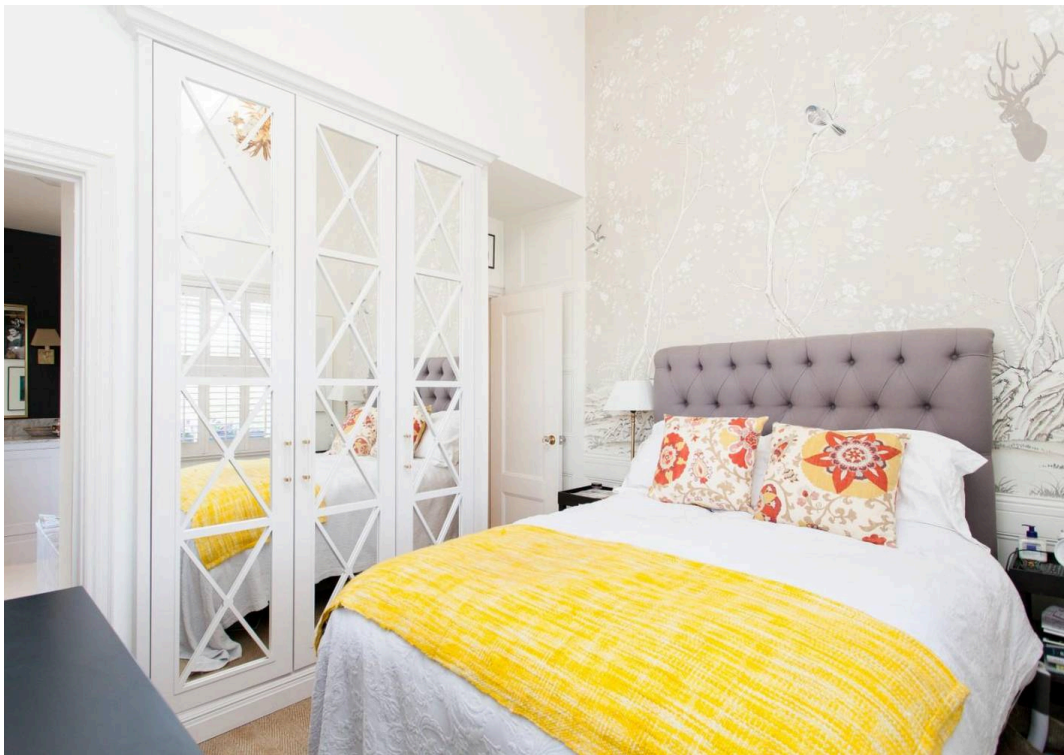
Council Tax band: D

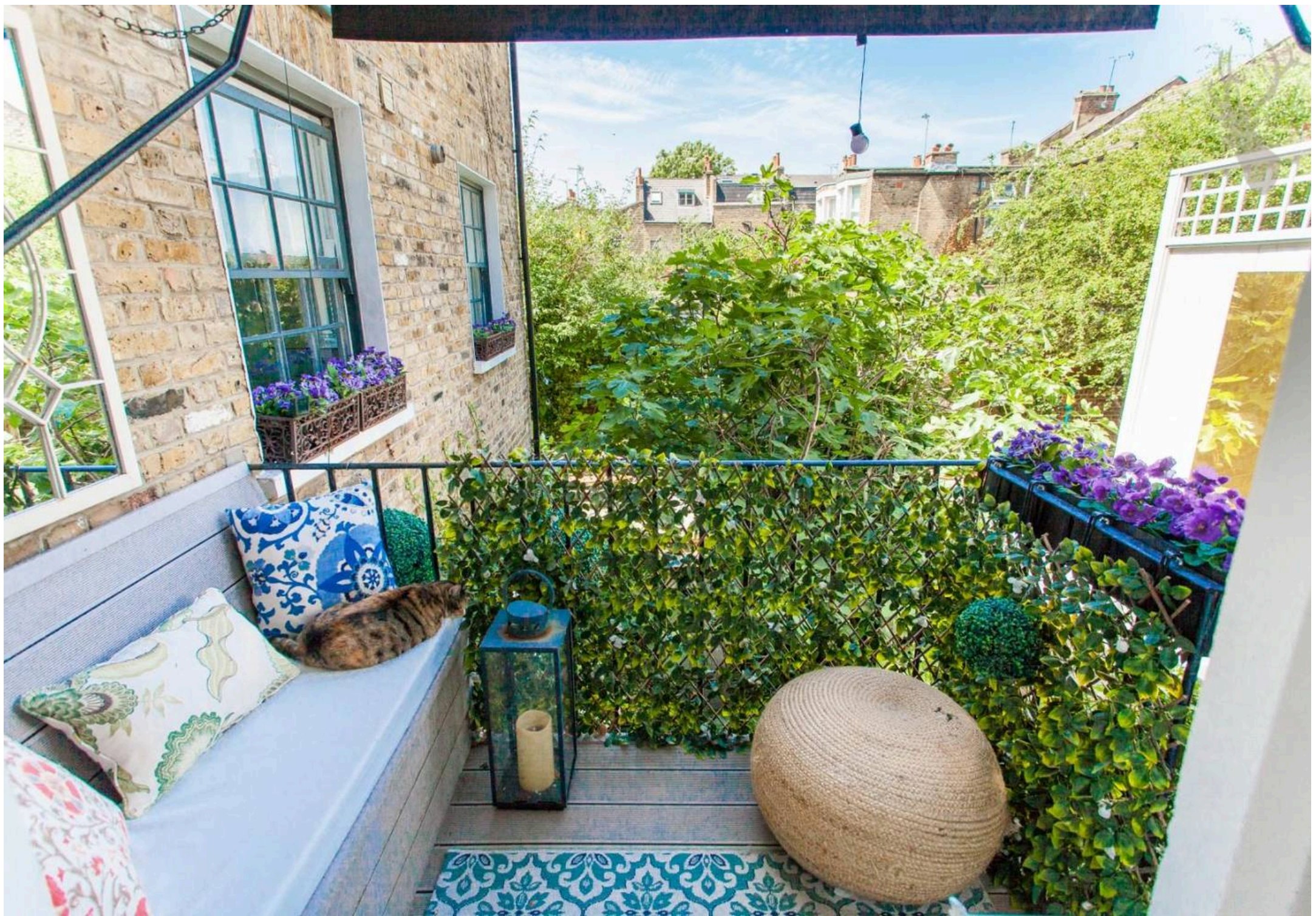
Tenure: Share of Freehold

EPC Energy Efficiency Rating: D

EPC Environmental Impact Rating: E



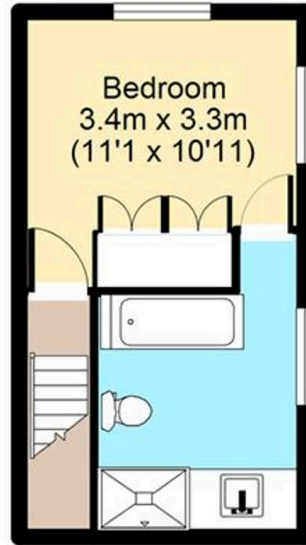




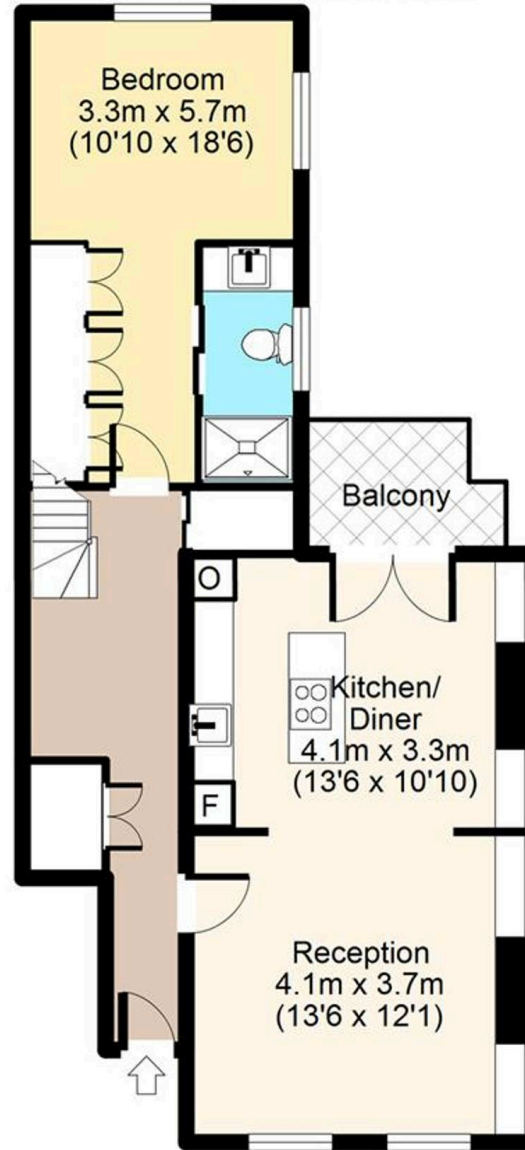
Rhonda Grove, E3



First Floor



Upper Ground Floor



Total area: approx. 81 sq. metres (873 sq. feet)

For illustration purposes only - not to scale

www.lpaplus.co.uk

FROM EAST LONDON ENERGY TO WEST ESSEX EASE

We Make Moving Home Easy.

At Butler and Stag, we do more than just connect London to West Essex – we make the move seamless. With offices spanning from vibrant East London to the tranquillity of West Essex, we understand the nuances of each area and the journey people take between them. Our marketing goes beyond standard listings, showcasing every property with precision, creativity, and reach that others simply can't match. Coupled with an unparalleled attention to detail, from first enquiry to final move-in, we ensure every client and customer feels informed, supported, and confident. Simply put, we do the little things that make a big difference, setting us apart in every step of the property experience.



LONDON STRATFORD SOUTH WOODFORD BUCKHURST HILL LOUGHTON EPPING BEYOND

Like what you see? Let's talk

Book your **FREE** valuation now



020 8102 1236

london@butlerandstag.com

508 Roman Road, Bow, London, E3 5LU

butlerandstag.uk

IMPORTANT NOTICE - These particulars have been prepared in good faith and they are not intended to constitute part of an offer or contract. We have not performed a structural survey on this property and the services, appliances and specific fittings have not been tested. All photographs, measurements, floor plans and distances referred to are given as a guide and should not be relied upon.

BUTLER & STAG

