



8 Olveston Road, Bristol
£595,000

8 Olveston Road

Bristol

- Edwardian mid-terrace
- Two reception rooms
- Kitchen/diner with bi-fold doors
- Three double bedrooms
- Principal bedrooms with en-suite
- Family bathroom and downstairs W/C
- Southerly facing garden
- Close to Gloucester Road and Horfield Common
- Near to Ashley Down Primary School
- 1401 sqft

This beautifully presented three-bedroom Victorian terraced house offers an impressive 1,401 square feet, providing ample and versatile living space while retaining charming period character.

Entering the property, there is an entrance hall that provides access to all of the ground floor accommodation, a central staircase leading to the first floor with a W/C tucked beneath. To the front is the lead reception, benefitting a bay with double-glazed windows, recess fireplace with exposed brickwork. Sitting centrally is the second reception room, with a cast iron fireplace creating a focal point for the room and French doors leading out to the side garden.

To the rear is the heart of the home, the spacious kitchen/diner, equipped with contemporary wall and base units with wood worktops over, a mix of integrated and freestanding appliances and a dining area. All complemented by bi-fold doors that create a seamless connection with the sunny rear garden.



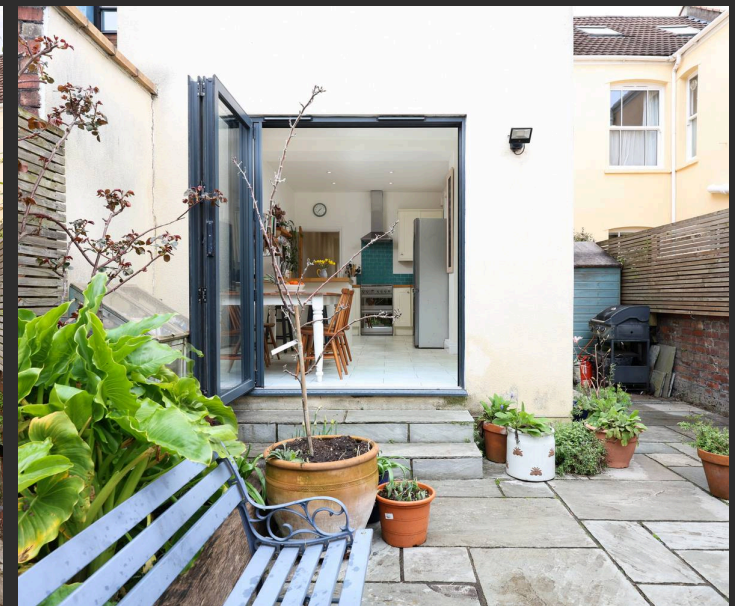
You can include any text here. The text can be modified upon generating your brochure.



You can include any text here. The text can be modified upon generating your brochure.

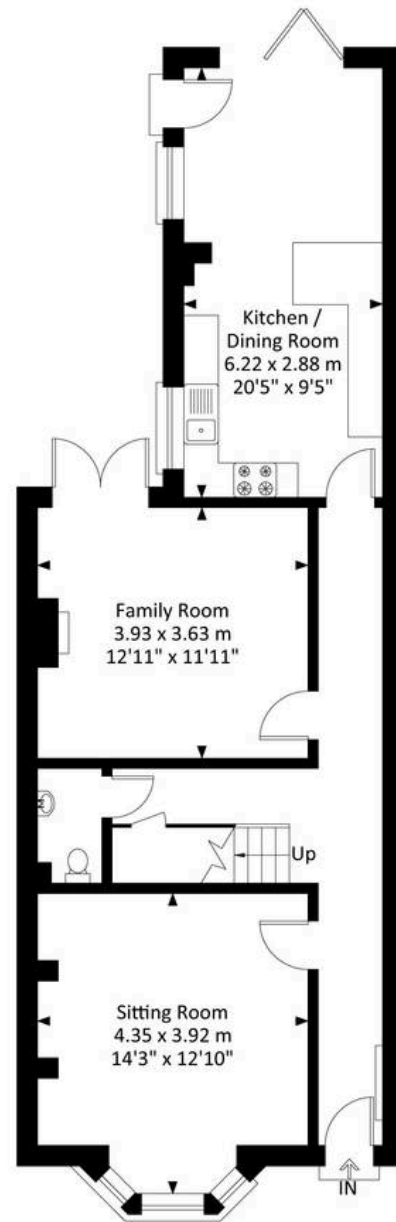


You can include any text here. The text can be modified upon generating your brochure.

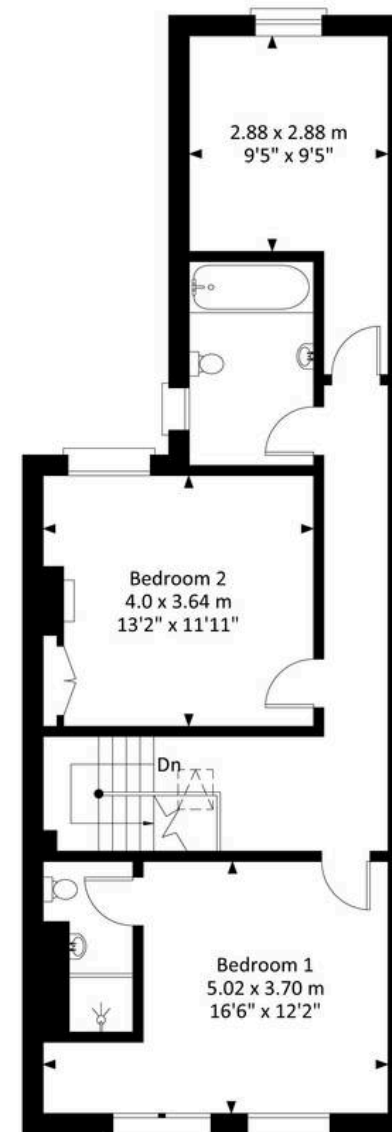


8 Olveston Road, Horfield, Bristol, BS7 9PB

Approximate Gross Internal Area = 130.23 sq m / 1401.78 sq ft



Ground Floor



First Floor

Illustration for identification purposes only, measurements and approximate, not to scale.



Elephant Estate Agents

Elephant, 2 The Promenade Gloucester Road - BS7 8AL

01173700556 • bishopston@elephantlovesbristol.co.uk • www.elephantlovesbristol.co.uk/