



26d St. Stephens Avenue, London

London



£575,000 TS

Est. 1850



26d St. Stephens Avenue

London

Spacious, light-filled property with flexible living areas, modern kitchen, large bedroom, share of freehold, and potential to add a second bedroom. Prime location near amenities and transport.

Council Tax band: E

Tenure: Share of Freehold

EPC Energy Efficiency Rating: D

EPC Environmental Impact Rating:

- Large living space
- Potential to create extra bedroom
- Share of Freehold



Reception

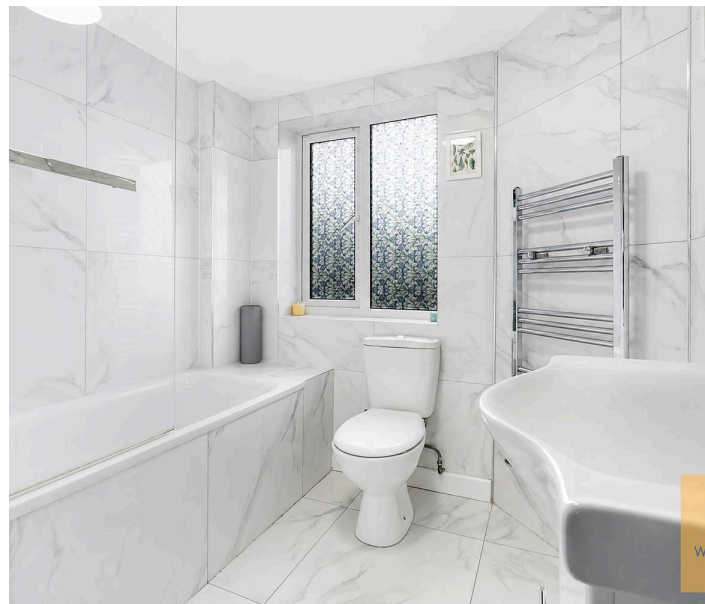
Bedroom 1

Bathroom 1

Kitchen/Diner

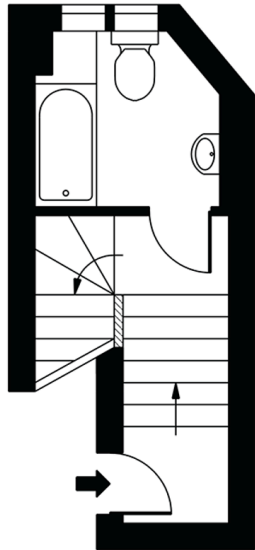
bedroom 2

Bathroom 2

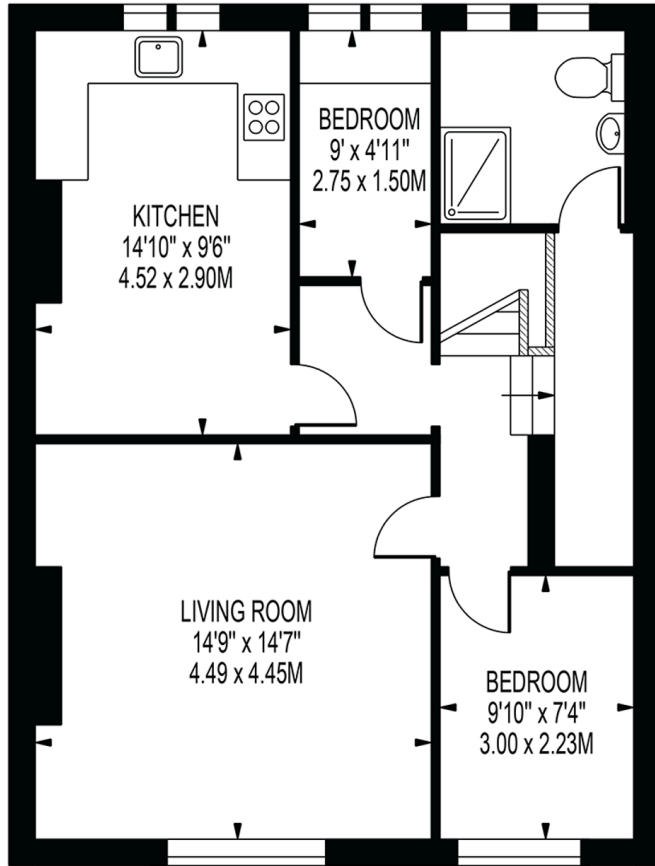


ST. STEPHEN'S AVENUE

APPROXIMATE GROSS INTERNAL FLOOR AREA: 779 SQ FT - 72.35 SQ M



FIRST FLOOR
ENTRANCE



SECOND FLOOR

FOR ILLUSTRATION PURPOSES ONLY

THIS FLOOR PLAN SHOULD BE USED AS A GENERAL OUTLINE FOR GUIDANCE ONLY AND DOES NOT CONSTITUTE IN WHOLE OR IN PART AN OFFER OR CONTRACT. ANY INTENDING PURCHASER OR LESSEE SHOULD SATISFY THEMSELVES BY INSPECTION, SEARCHES, ENQUIRIES AND FULL SURVEY AS TO THE CORRECTNESS OF EACH STATEMENT. ANY AREAS, MEASUREMENTS OR DISTANCES QUOTED ARE APPROXIMATE AND SHOULD NOT BE USED TO VALUE A PROPERTY OR BE THE BASIS OF ANY SALE OR LET.



Willmotts Real Estate Agents

Willmotts Property Services, Willmott House - W6 9EU

02082229958

info@willmotts.com

www.wreg.co.uk

These particulars are prepared for the convenience of prospective purchasers and do not form part of any offer or contract. All descriptions, dimensions, references to condition and other details are provided in good faith but are for guidance only and should not be relied upon as statements of fact. Measurements are approximate and subject to variations; purchasers are advised to verify dimensions and specifications. No warranty is given or implied regarding the accuracy of the information contained herein. Properties may be subject to prior sale, lease, or withdrawal without notice. The estate agent accepts no responsibility for any loss or damage arising from reliance on these particulars.



WILLMOTTS
Est. 1856