



RIGBY & MERCHANT

The Brick, Woodfield Road, W9

Modern living on the fifth floor (with lift) in a two double bedroom, two bathroom apartment with a balcony.



Brick Apartments, W9
£1,200,000



£1,200,000

RIGBY &
MARCHANT

Modern living on the fifth floor (with lift) in a two double bedroom, two bathroom apartment with a balcony. The apartment enjoys fantastic natural light and views to all rooms with numerous floor to ceiling windows. The double aspect open plan living room has a very modern aesthetic with fully integrated kitchen, generous entertaining space and cleverly created study area. With direct access to a private balcony. There is a master bedroom with en suite, second double bedroom and bathroom. Brick Apartments enjoys a daytime concierge and large communal roof garden (conveniently accessed from the fifth floor). Additionally there is air conditioning and this apartment has underground parking.

The Brick is located on Woodfield Road a cobbled street. Situated between Notting Hill with its famous market and array of fantastic shopping and restaurant options and Maida Vale and Little Venice characterised by its canal side streets. The closets underground station in Westbourne Park on the Circle and Hammersmith & City Line lines.

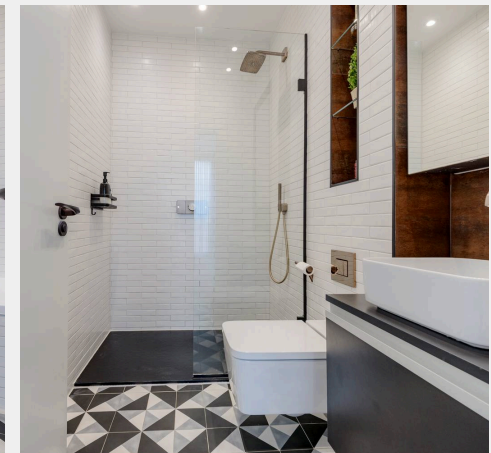
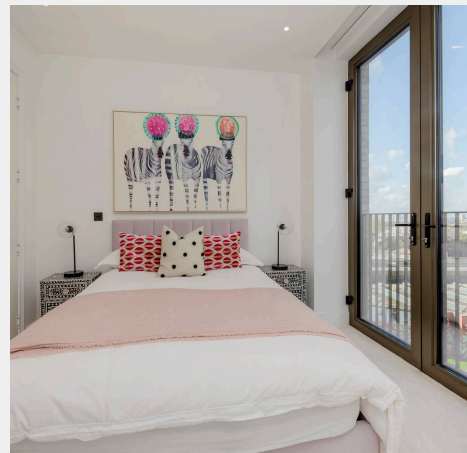
Service Charge: £6454.76 per annum approx

Council Tax band: F

Tenure: Leasehold (expires 25/12/3018)

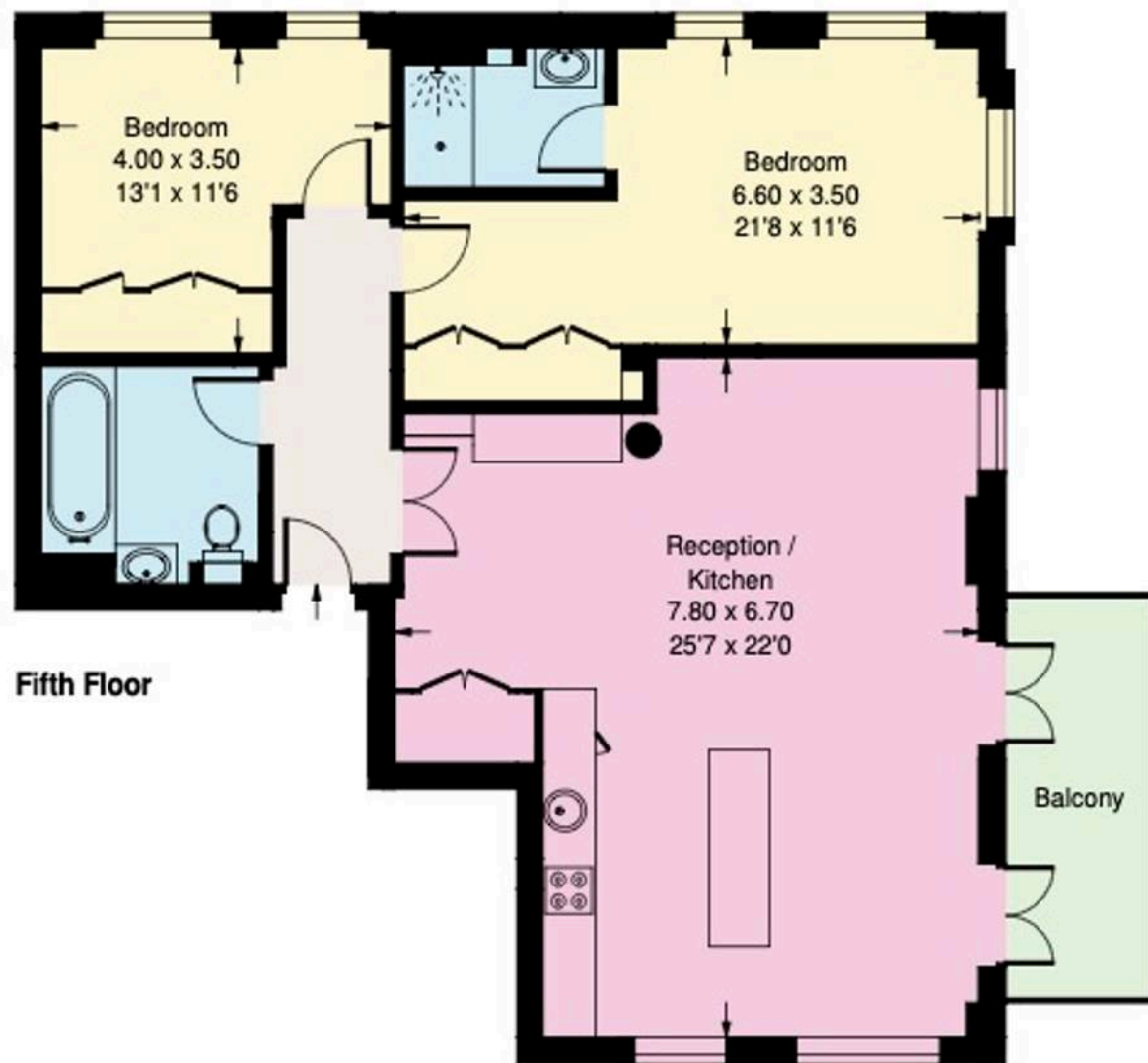
EPC Energy Efficiency Rating: B

EPC Environmental Impact Rating: B



Brick Apartments, W9

Approx. Gross Internal Area
95 sq m / 1023 sq ft



Whilst every attempt has been made to ensure the accuracy of the floor plan, measurements are approximate and not to scale.
No guarantee is given on the total square footage of the property quoted on the plan. Figures given are for guidance.
Plan is for illustration purposes only, not to be used for valuations.



Rigby & Marchant

115 Westbourne Studios 242 Acklam Road, London - W10 5JJ

020 7221 7210

sales@rigbyandmarchant.co.uk

www.rigbyandmarchant.co.uk/

R&M