



Church Street, Lenton

£2,277 pcm Freehold

Student Home for 2026/27 • Walking Distance to Campus & QMC • Walking Distance to Tram Network • Homely & Contemporary Interiors • Flexible Dates • Sought-After Student Location • Recently Refurbished Stylish Home





| Student Home for 2026/27 | £107pppw | No Holding Deposit | Bills Option | Recently Refurbished Stylish Home | Flexible Dates | Two Parking Spaces | Walking Distance to Campus and QMC | Great for both Uon & NTU Students |

Council Tax band: A

Tenure: Freehold

EPC Energy Efficiency Rating: C

EPC Environmental Impact Rating: C

- Student Home for 2026/27
- Walking Distance to Campus & QMC
- Walking Distance to Tram Network
- Homely & Contemporary Interiors
- Flexible Dates
- Sought-After Student Location
- Recently Refurbished Stylish Home



features
features
Trim flo
Rotatio
Transiti
TourSp



✦ Enh



✦ Enh

Bills

There is a bills package available, subject to fair usage which will be outlined in your tenancy agreement. Bills that can be included are Gas, Water, Electricity, and Internet. The Tenant is responsible for arranging the supply and payment of all other bills and utilities, if applicable.



| Student Home for 2026/27 | £107pppw | No Holding Deposit | Bills Option | Recently Refurbished Stylish Home | Flexible Dates | Two Parking Spaces | Walking Distance to Campus and QMC | Great for both Uon & NTU Students |

Council Tax band: A

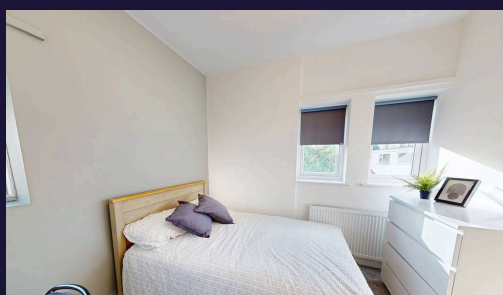
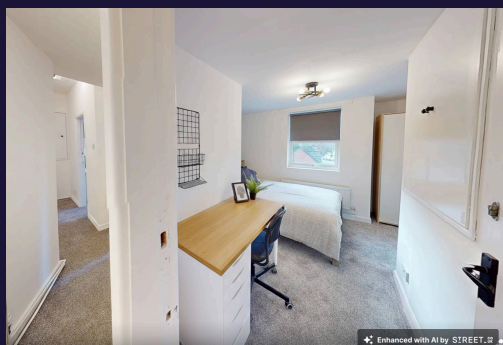
Tenure: Freehold

EPC Energy Efficiency Rating: C

EPC Environmental Impact Rating: C



- › Student Home for 2026/27
- › Walking Distance to Campus & QMC
- › Walking Distance to Tram Network
- › Homely & Contemporary Interiors
- › Flexible Dates
- › Sought-After Student Location
- › Recently Refurbished Stylish Home



| Student Home for 2026/27 |
£107pppw | No Holding Deposit | Bills
Option | Recently Refurbished Stylish
Home | Flexible Dates | Two Parking
Spaces | Walking Distance to Campus
and QMC | Great for both Uon & NTU
Students |

Council Tax band: A

Tenure: Freehold

EPC Energy Efficiency Rating: C

EPC Environmental Impact Rating: C



- › Student Home for 2026/27
- › Walking Distance to Campus & QMC
- › Walking Distance to Tram Network
- › Homely & Contemporary Interiors
- › Flexible Dates
- › Sought-After Student Location
- › Recently Refurbished Stylish Home

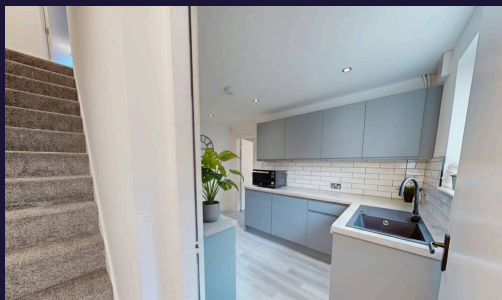


Council Tax band: A

Tenure: Freehold

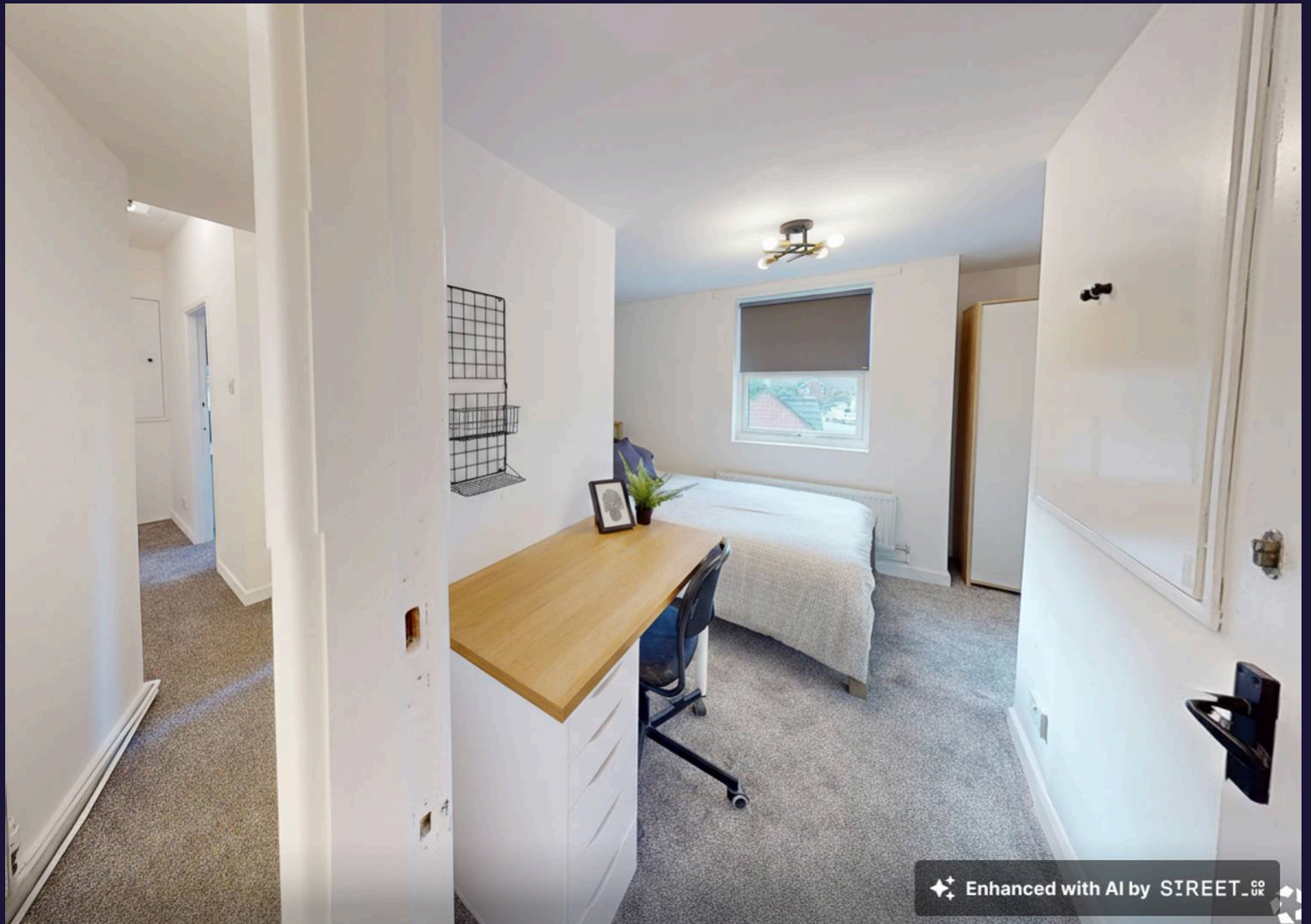
EPC Energy Efficiency Rating: C

EPC Environmental Impact Rating: C





Enhanced with AI by SIREET

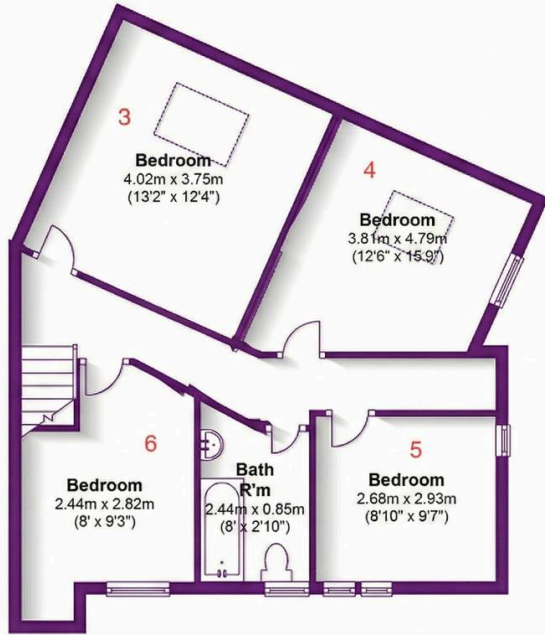


Enhanced with AI by SIREET

Church Street, Lenton

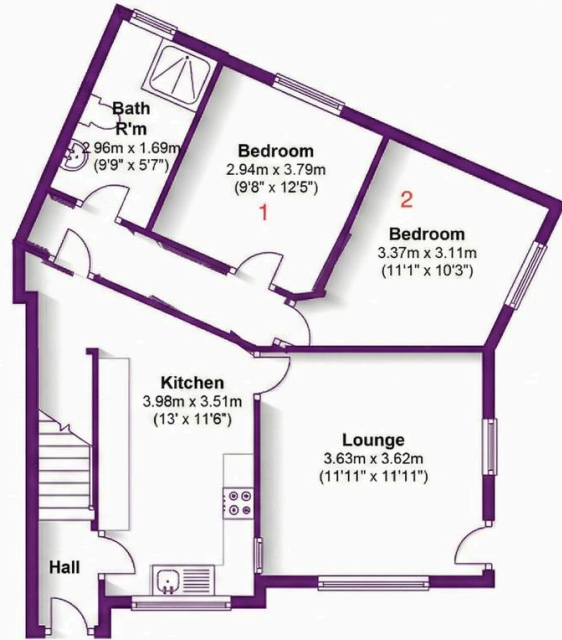
First Floor

Approx. 59.9 sq. metres (644.6 sq. feet)



Ground Floor

Approx. 57.8 sq. metres (621.6 sq. feet)



Total area: approx. 117.6 sq. metres (1266.2 sq. feet)

