



City Road, Nottingham

£1,738 pcm Freehold

Student Home For 2026/27 • Driveway for Two Vehicles • Flexible Dates • 10 Minutes Walk From QMC • Extremely Convenient Location • 10 Minutes Walk From Campus



| Your Student Home for 2026/27 | £100pppw | No Holding Deposit | Bills Package Available | Flexible Dates | 4 Bed | 2 Bath | Driveway for Two | 10 Minutes Walk to Campus, Tram Link, and QMC | Council Tax band: C

Tenure: Freehold

EPC Energy Efficiency Rating: D

EPC Environmental Impact Rating: E

- Student Home For 2026/27
- Driveway for Two Vehicles
- Flexible Dates
- 10 Minutes Walk From QMC
- Extremely Convenient Location
- 10 Minutes Walk From Campus



Bills

There is a bills package available, subject to fair usage which will be outlined in your tenancy agreement. Bills that can be included are Gas, Water, Electricity, and Internet. The Tenant is responsible for arranging the supply and payment of all other bills and utilities, if applicable.

GARDEN

Private rear garden.



| Your Student Home for 2026/27 | £100pppw | No Holding Deposit | Bills Package Available | Flexible Dates | 4 Bed | 2 Bath | Driveway for Two | 10 Minutes Walk to Campus, Tram Link, and QMC | Council Tax band: C

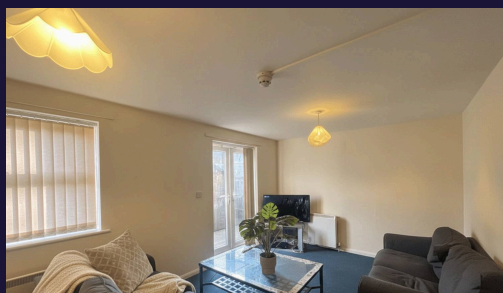
Tenure: Freehold

EPC Energy Efficiency Rating: D

EPC Environmental Impact Rating: E



- › Student Home For 2026/27
- › Driveway for Two Vehicles
- › Flexible Dates
- › 10 Minutes Walk From QMC
- › Extremely Convenient Location
- › 10 Minutes Walk From Campus



Enhanced with AI by STREET_360

| Your Student Home for 2026/27 |
£100pppw | No Holding Deposit | Bills
Package Available | Flexible Dates | 4
Bed | 2 Bath | Driveway for Two | 10
Minutes Walk to Campus, Tram Link,
and QMC |
Council Tax band: C

Tenure: Freehold

EPC Energy Efficiency Rating: D

EPC Environmental Impact Rating: E



- Student Home For 2026/27
- Driveway for Two Vehicles
- Flexible Dates
- 10 Minutes Walk From QMC
- Extremely Convenient Location
- 10 Minutes Walk From Campus



Council Tax band: C

Tenure: Freehold

EPC Energy Efficiency Rating: D

EPC Environmental Impact Rating: E

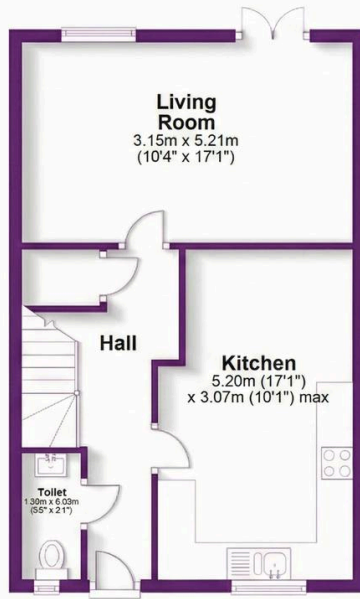




City Road, Nottingham

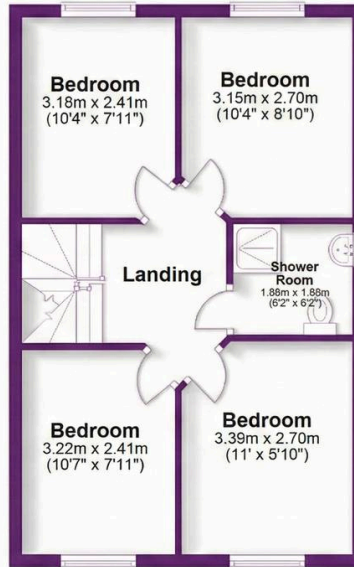
Ground Floor

Approx. 44.0 sq. metres (473.9 sq. feet)



First Floor

Approx. 44.3 sq. metres (476.6 sq. feet)



Second Floor

Approx. 31.1 sq. metres (334.7 sq. feet)



Total area: approx. 119.4 sq. metres (1285.2 sq. feet)

