



Flat 8, 114-116 St. Leonards Road, Windsor
£1,800 pcm

 **TIM RUSS**
& Company



Flat 8

114-116 St. Leonards Road, Windsor

Situated in the heart of Windsor town centre, this generous executive apartment offers stylish and contemporary living within a recently developed building finished to an exceptional standard. The apartment is located in a well-maintained development and benefits from a video entry system and parking for one car.

The accommodation comprises a welcoming entrance hall leading into a spacious open-plan living/dining room with wood-effect flooring throughout. The modern kitchen features granite worktops and integrated appliances. There are two double bedrooms, including a well-proportioned principal room with an en-suite shower room. A separate family bathroom with a shower over the bath completes the layout.

Location

Set in a desirable and convenient location, the apartment is within easy walking distance of Windsor's vibrant town centre and its wide array of shopping, dining, and cultural amenities. Notable nearby attractions include Windsor Castle, the Long Walk, Eton College, and the River Thames.

The property is ideally positioned for commuters, offering excellent transport links. Windsor & Eton Riverside Station provides direct rail access to London Waterloo, while Windsor Central Station connects to London Paddington via Slough. Road connections are equally strong, with the M4 (Junction 6) providing swift access to the M25 and M3. Heathrow Airport is just a short drive or bus ride away, and Gatwick is also easily reached via the M25.





Flat 8

114-116 St. Leonards Road, Windsor

Council Tax band: TBD

Tenure: Leasehold

EPC Energy Efficiency Rating: E

EPC Environmental Impact Rating:

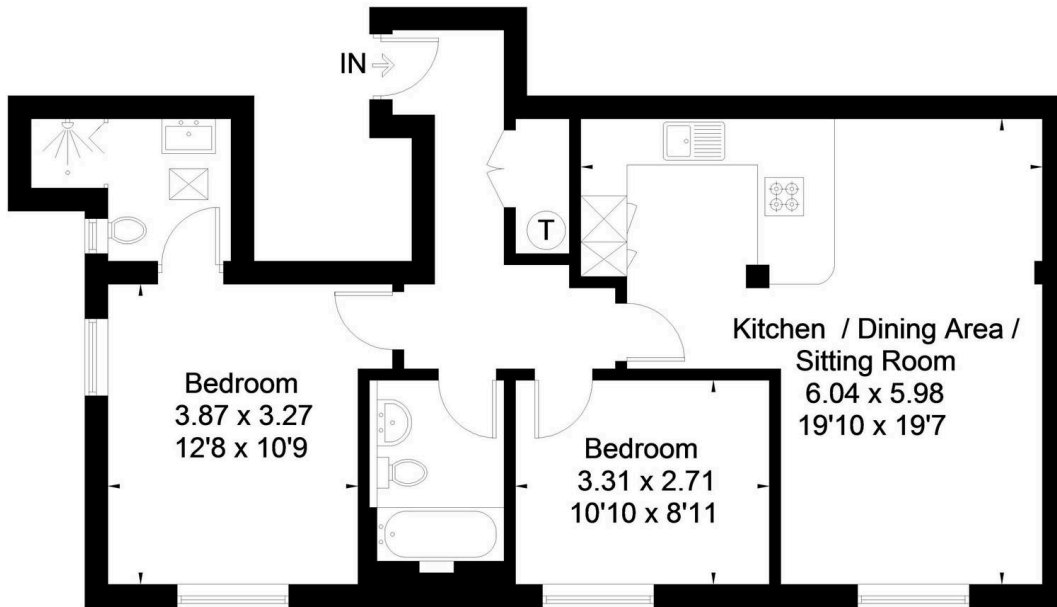
- Top floor apartment
- Two bedrooms
- En-suite
- Modern fitted kitchen
- Allocated parking space
- Available end of August
- Unfurnished





St. Leonards Road, Windsor

Approximate Gross Internal Area
70.3 sq m / 757 sq ft



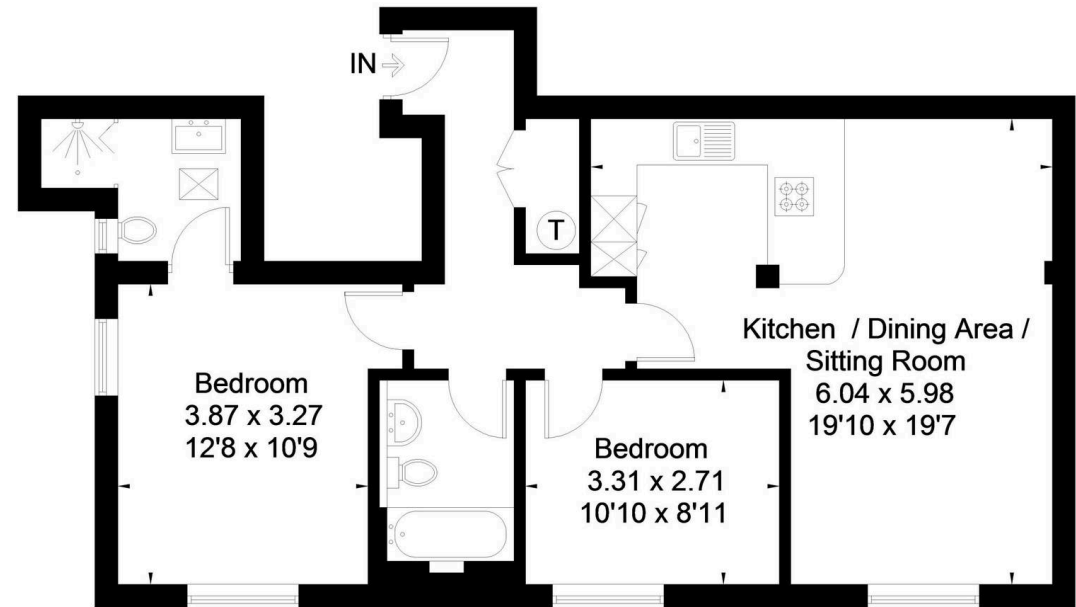
Second Floor

FLOORPLANZ © 2016 0845 6344080 Ref: 171541

This plan is for layout guidance only. Drawn in accordance with RICS guidelines. Not drawn to scale unless stated. Windows & door openings are approximate. Whilst every care is taken in the preparation of this plan, please check all dimensions, shapes & compass bearings before making any decisions reliant upon them.

St. Leonards Road, Windsor

Approximate Gross Internal Area
70.3 sq m / 757 sq ft



Second Floor

FLOORPLANZ © 2016 0845 6344080 Ref: 171541

This plan is for layout guidance only. Drawn in accordance with RICS guidelines. Not drawn to scale unless stated. Windows & door openings are approximate. Whilst every care is taken in the preparation of this plan, please check all dimensions, shapes & compass bearings before making any decisions reliant upon them.