



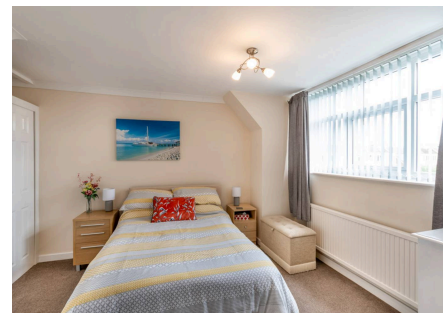
Silverdale Close, Retford

Offers in the Region of £280,000

• ****NO UPWARD CHAIN**** • Deceptively Spacious THREE DOUBLE BEDROOM Detached Dormer Bungalow • Significantly Modernised Under Current Ownership to Include Contemporary Kitchen & Bathroom Suites, Oak Internal Doors, & New Flooring Throughout • Accessible Ground Floor Bedroom & Well-Appointed Ground Floor Bathroom- Ideal for Multi-Generational Living • Second Bedroom Enjoying En Suite Facilities • Private Driveway & Detached Double Garage Providing Ample Parking • Sizeable, Beautifully Landscaped Rear Garden • Conveniently Situated on the Outskirts of Retford



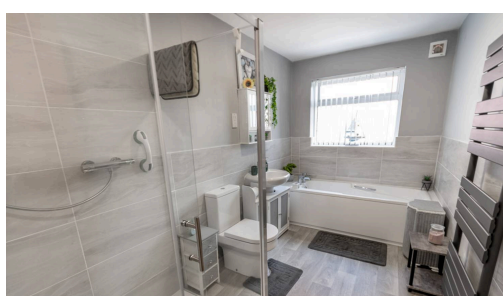
A deceptively spacious THREE DOUBLE BEDROOM detached dormer bungalow. Significantly modernised since 2021, 1 Silverdale Close now boasts contemporary kitchen and bathroom suites, oak internal doors, and new flooring throughout. Capturing an abundance of natural light, the generous ground floor briefly comprises a welcoming entrance hall, open plan lounge diner, modern kitchen enjoying plentiful storage, utility room, double bedroom/ versatile reception room, and a well-appointed family bathroom. The first floor sees two sizeable bedrooms, one benefitting from en suite facilities, and a handy WC. Outside, a private driveway and detached double garage cater for numerous vehicles, whilst an ample, beautifully landscaped garden resides to the rear. Conveniently situated on the outskirts of Retford, with nearby scenic tow path routes in every direction, this well-balanced property lends itself to those who enjoy the outdoors, whilst benefitting from close proximity to Retford's wealth of everyday amenities, leisure facilities, and dining options.



Council Tax band: D

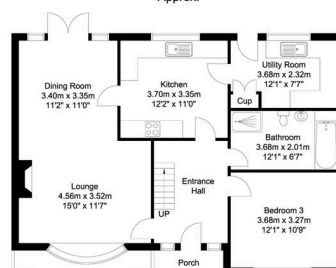
Tenure: Freehold

EPC Energy Efficiency Rating: E

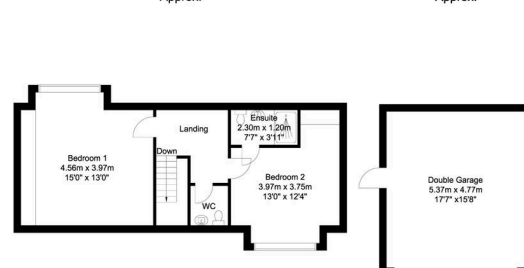


AJ ALEXANDER JACOB
ESTATE AGENTS & COMPANY

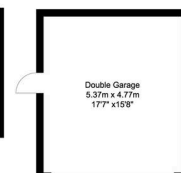
Ground Floor
80 sq m/861.11 sq ft
Approx.



First Floor
46 sq m/495.13 sq ft
Approx.



Outbuilding
26 sq m/279.86 sq ft
Approx.



Whilst every attempt has been made to ensure the accuracy of the floor plan contained here, no responsibility is taken for incorrect measurements of doors, windows, appliances and rooms or any error, omission or misstatement. Exterior and interior walls are drawn to scale based on interior measurements. Any figure given is for initial guidance only and should not be relied on as a basis of valuation. The plans are for marketing purposes only and should only be used as such. No guarantee is given on the accuracy of the total square footage/ metrage if quoted on this plan. CP Property Services @2020