



Flat 16, Wansbeck Lodge Wansbeck Close, Stretford

Manchester

£250,000

Flat 16

Wansbeck Lodge Wansbeck Close,
Manchester

Council Tax band: B

Tenure: Leasehold

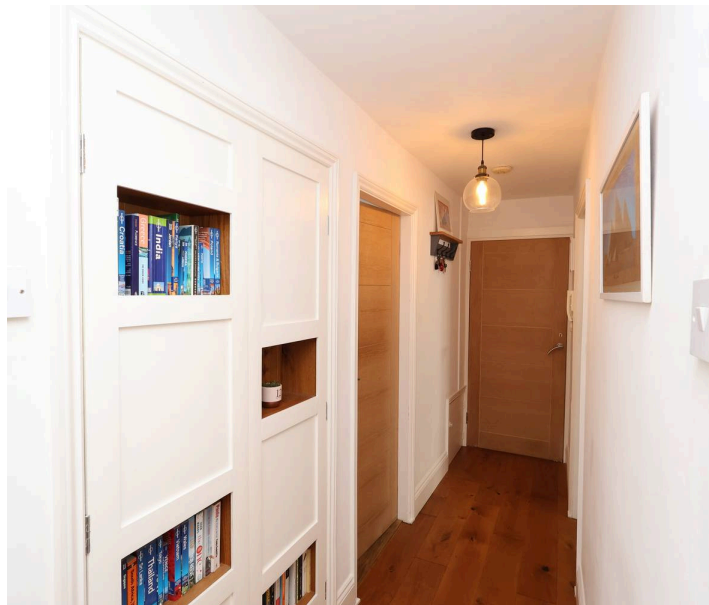
EPC Energy Efficiency Rating: D

EPC Environmental Impact Rating: E

- Spacious living area & extra storage space
- Modern kitchen with sleek cabinetry
- Three piece bathroom
- Two well proportioned bedrooms
- Spacious garden
- Allocated parking and garage space
- Ground floor flat

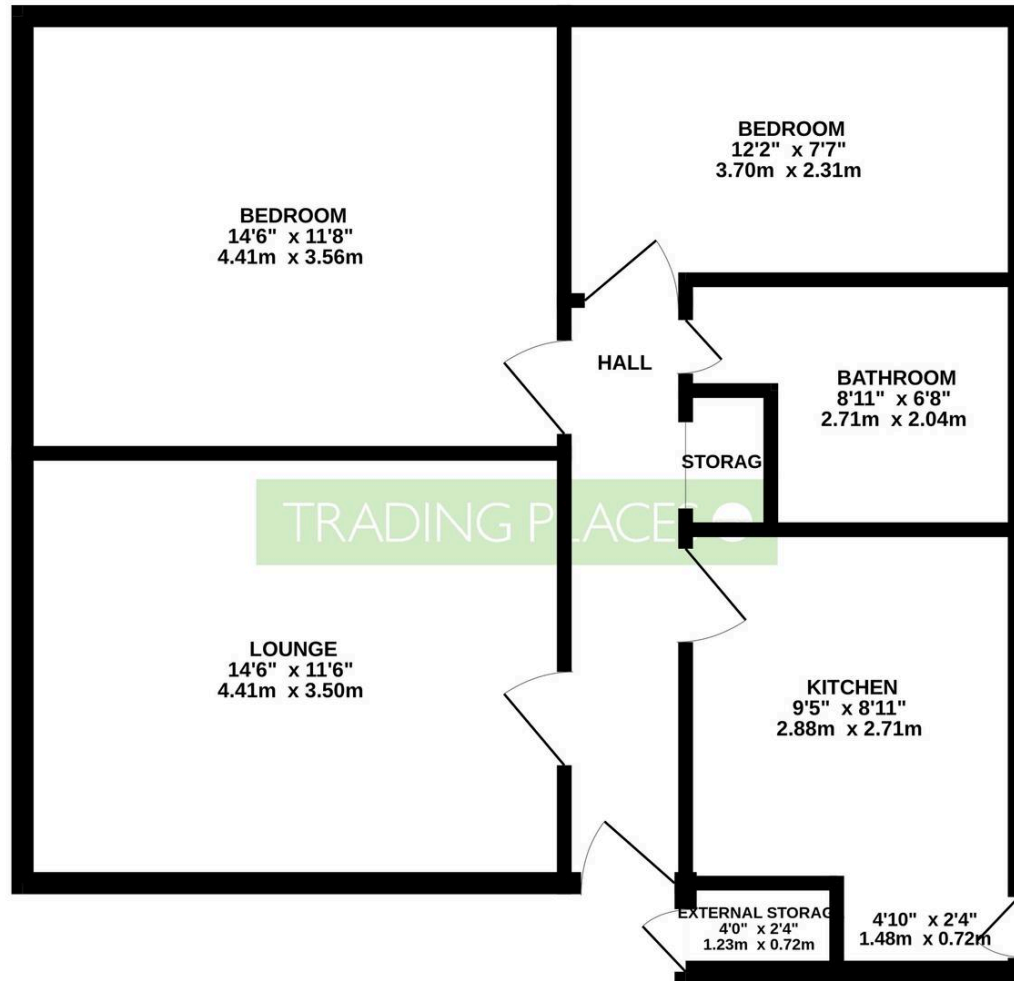








GROUND FLOOR
637 sq.ft. (59.2 sq.m.) approx.



TOTAL FLOOR AREA : 637 sq.ft. (59.2 sq.m.) approx.

Whilst every attempt has been made to ensure the accuracy of the floorplan contained here, measurements of doors, windows, rooms and any other items are approximate and no responsibility is taken for any error, omission or mis-statement. This plan is for illustrative purposes only and should be used as such by any prospective purchaser. The services, systems and appliances shown have not been tested and no guarantee as to their operability or efficiency can be given.
Made with MetroPix ©2026



Trading Places

Trading Places, 133 Barton Road, Stretford - M32 8DN

01618659220 • stretford@tradingplaces.co.uk • www.tradingplaces.co.uk/