



Ink Court, Bow, E3  
London

£595,000

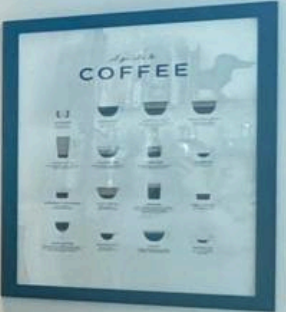


## Ink court, Bow, E3

London

Asking Price: £595,000 A spacious 969 sq. ft. two-bedroom apartment set within the sought-after Riverside Apartments development, nestled on the banks of the picturesque Stansted Mill Stream. Ideally located moments from Victoria Park and the vibrant amenities of Hackney Wick, this impressive home offers the perfect blend of modern comfort, convenience and tranquil waterside living, making it ideal for professionals, couples and those seeking a peaceful retreat within East London.

- Concierge Service / Lift Access To All Levels
- EWS1 Compliant
- Hackney Wick Station Close By
- Open Plan Concept Living Space
- Two Lavishly Sized Bedrooms
- Two Bathrooms
- Private Balcony
- 969 Sq/Ft Internal Living Space
- Fifth Floor Apartment



Upon entering this impressive two-bedroom apartment, you are welcomed by a spacious open-plan living and dining area, beautifully enhanced by an abundance of natural light. Floor-to-ceiling windows frame attractive views across the landscaped communal grounds, creating a bright and inviting atmosphere throughout.

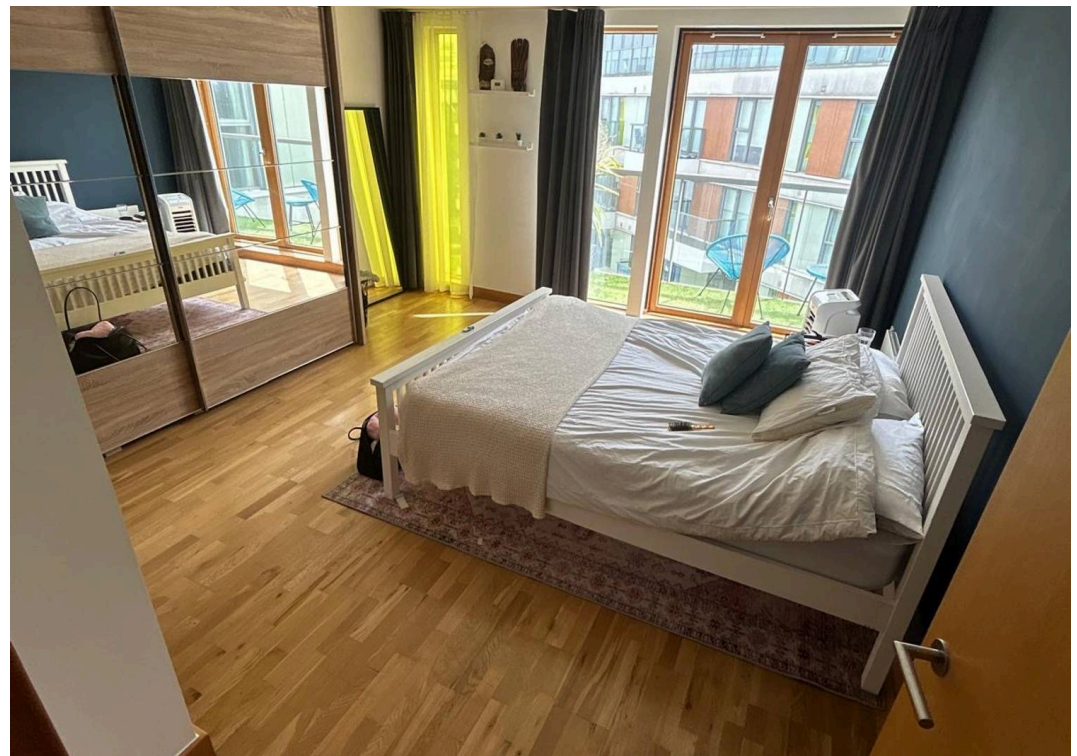
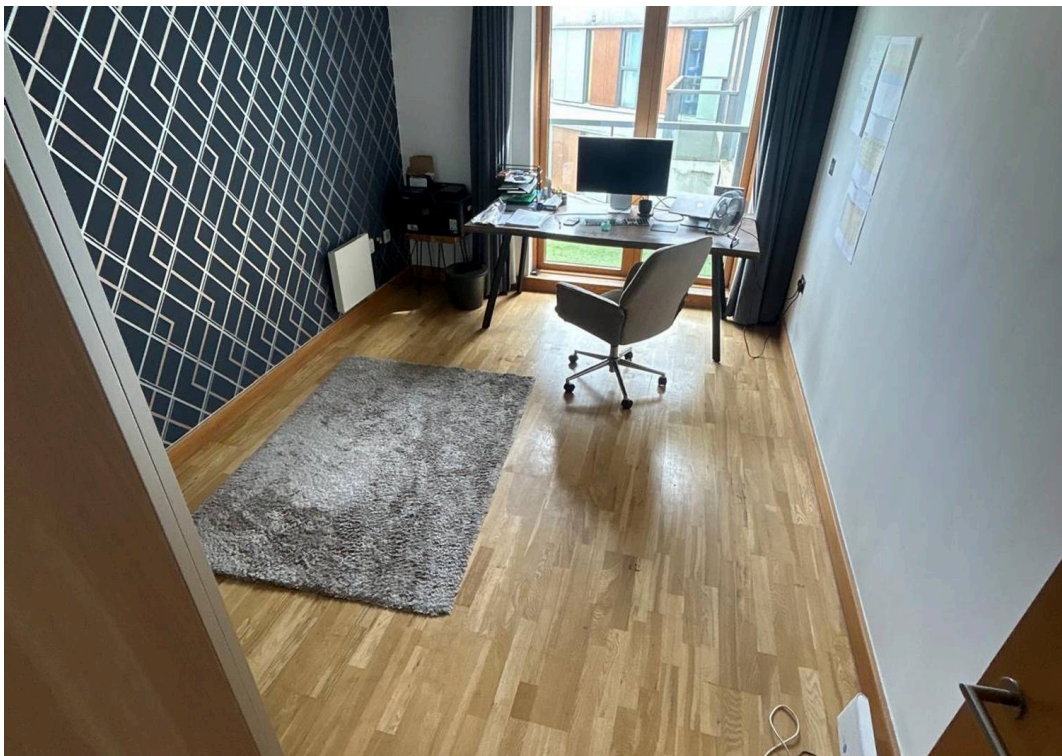
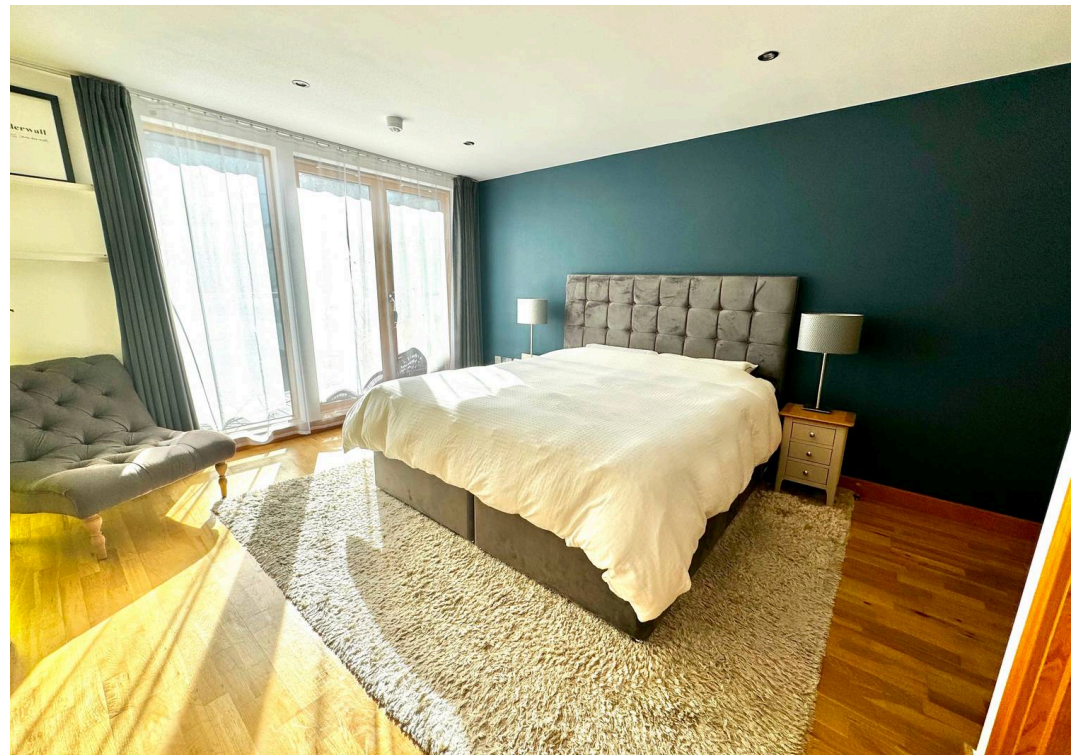
Finished to a modern specification, the apartment offers a stylish and versatile living space ready to be personalised to suit your lifestyle. Both bedrooms are generously proportioned and feature full-height windows, providing a peaceful retreat with plenty of natural light and ample space for relaxation.

The property benefits from two contemporary bathrooms, fitted with high-quality fixtures and finishes. Thoughtfully designed storage solutions throughout the apartment ensure practicality and convenience for modern living.

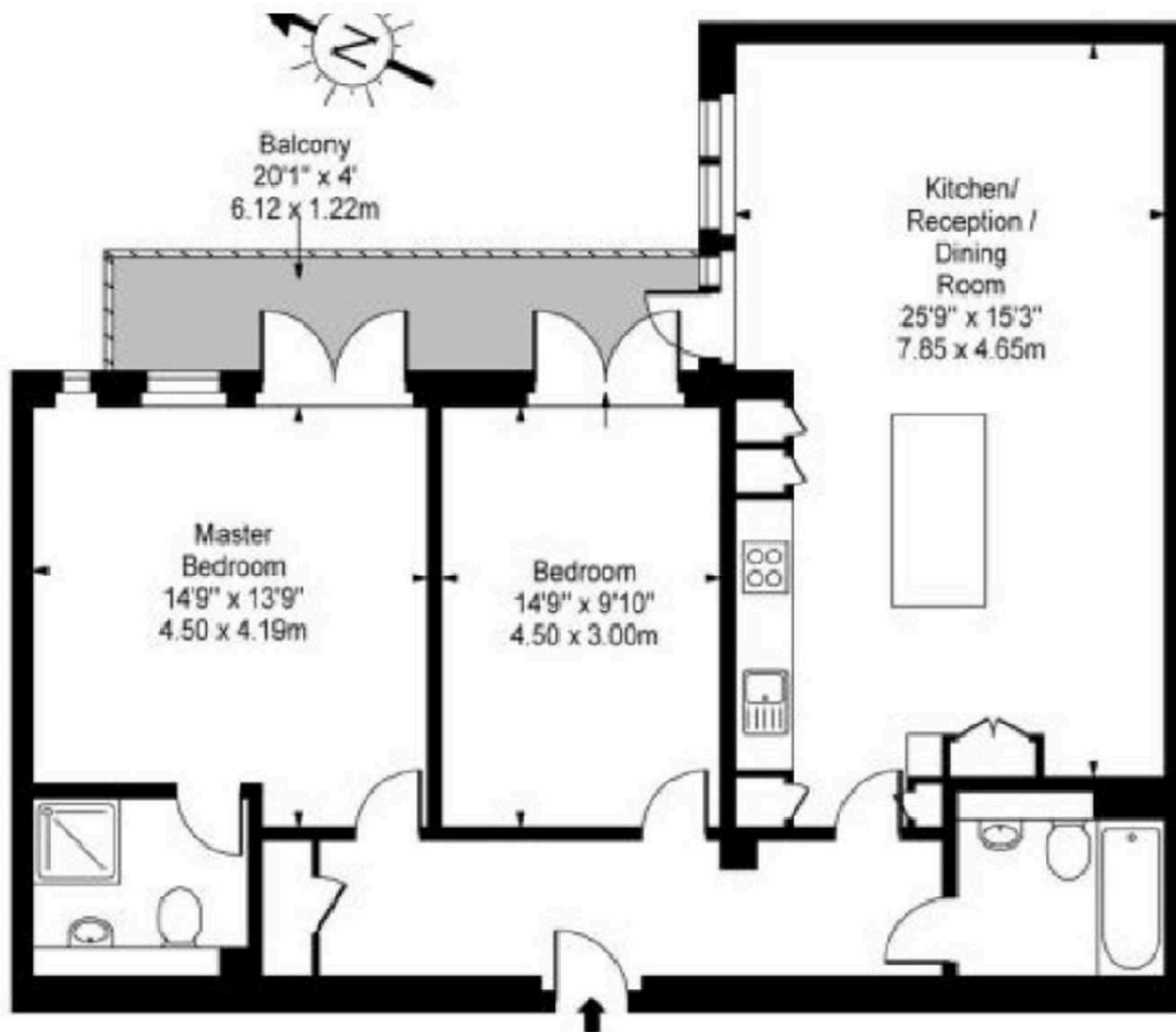
Residents of Riverside Apartments enjoy access to a range of excellent amenities, including beautifully maintained landscaped gardens, picnic areas, and scenic walking routes along the nearby river and canal pathways. A concierge service further enhances the lifestyle on offer, providing both convenience and peace of mind.

Ideally positioned on the edge of Hackney Wick, Wick Lane places you within one of East London's most vibrant and creative neighbourhoods. Renowned for its independent cafés, bars, restaurants and eclectic art scene, Hackney Wick has evolved into a thriving cultural destination. The apartment is also just moments from Victoria Park, with the charming pubs, delis and boutique shops of Victoria Park Village within easy walking distance, alongside excellent connections to Queen Elizabeth Olympic Park and Westfield Stratford City.









**Approximate Area = 90 sqm/ 969 sq ft**

# FROM EAST LONDON ENERGY TO WEST ESSEX EASE

## We Make Moving Home Easy.

At Butler and Stag, we do more than just connect London to West Essex – we make the move seamless. With offices spanning from vibrant East London to the tranquillity of West Essex, we understand the nuances of each area and the journey people take between them. Our marketing goes beyond standard listings, showcasing every property with precision, creativity, and reach that others simply can't match. Coupled with an unparalleled attention to detail, from first enquiry to final move-in, we ensure every client and customer feels informed, supported, and confident. Simply put, we do the little things that make a big difference, setting us apart in every step of the property experience.



LONDON   STRATFORD   SOUTH WOODFORD   BUCKHURST HILL   LOUGHTON   EPPING   BEYOND

# Like what you see? Let's talk

Book your **FREE** valuation now



020 8102 1236

[london@butlerandstag.com](mailto:london@butlerandstag.com)

508 Roman Road, Bow, London, E3 5LU

[butlerandstag.uk](http://butlerandstag.uk)

IMPORTANT NOTICE - These particulars have been prepared in good faith and they are not intended to constitute part of an offer or contract. We have not performed a structural survey on this property and the services, appliances and specific fittings have not been tested. All photographs, measurements, floor plans and distances referred to are given as a guide and should not be relied upon.

BUTLER & STAG

