



39 Elmsleigh Road, Heald Green
Cheadle

£335,000

**GASCOIGNE
HALMAN**

THE AREA'S LEADING ESTATE AGENCY



39 Elmsleigh Road

Heald Green, Cheadle

Three-bedroom semi-detached house with extended ground floor, spacious rooms, and renovation potential. Excellent location near amenities, schools, and transport. Ideal for investors or families.

Council Tax band: D

Tenure: Leasehold

- In need of modernisation
- Perfect for investors
- Great potential to improve
- Excellent location
- Extended ground floor
- Close to local amenities
- No onward chain

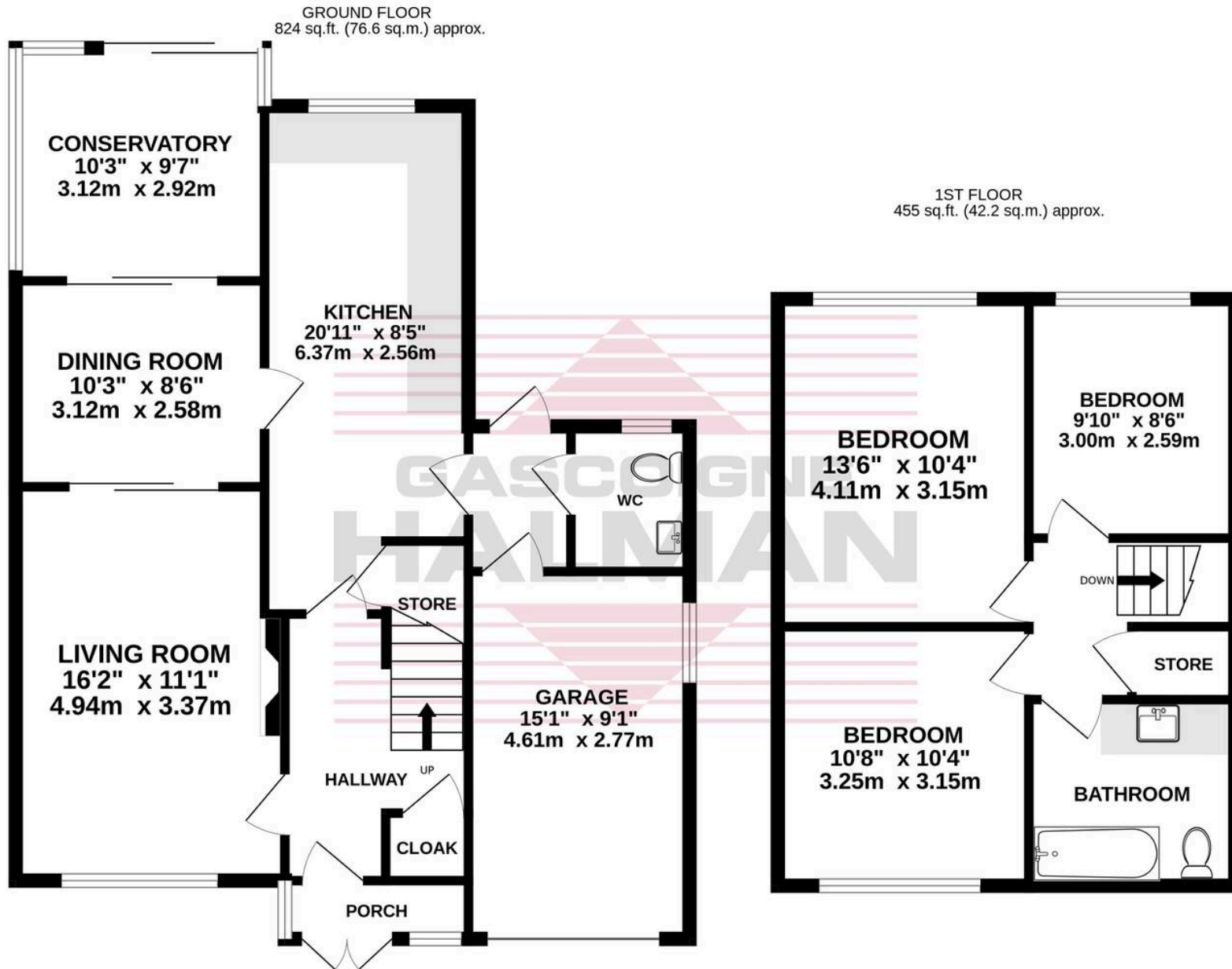


39 Elmsleigh Road

Heald Green, Cheadle

This three-bedroom semi-detached house presents an exceptional opportunity for investors or those seeking a property with significant potential to add value. Situated in an excellent location, the home is just a short distance from a variety of local amenities, making every-day living both convenient and enjoyable. Upon entering, you are welcomed by a spacious hallway that leads into the extended ground floor, offering a flexible layout ideal for family living or entertaining guests. The main reception room, with its generous proportions, provides ample space for relaxation, while the adjoining dining area benefits from natural light, creating an inviting atmosphere for both every-day meals and special occasions. The kitchen, though in need of modernisation, offers a practical footprint with scope for redesign to suit contemporary tastes and requirements. Upstairs, the property features three well-proportioned bedrooms, each offering comfortable accommodation and plenty of potential for personalisation. The location is a key highlight, with a selection of shops, cafes, and essential services within easy reach, as well as reputable schools and convenient transport links that make commuting and daily routines effortless. This property represents a rare chance to acquire a home with great potential in a sought-after area, providing an ideal base for those looking to invest, improve, and ultimately enjoy a modernised residence tailored to their own preferences and needs. Early viewing is highly recommended to appreciate the scope and possibilities this property has to offer.





Whilst every attempt has been made to ensure the accuracy of the floorplan contained here, measurements of doors, windows, rooms and any other items are approximate and no responsibility is taken for any error, omission or mis-statement. This plan is for illustrative purposes only and should be used as such by any prospective purchaser. The services, systems and appliances shown have not been tested and no guarantee as to their operability or efficiency can be given.
Made with Metropix ©2026



THE AREA'S LEADING ESTATE AGENCY