



Hill Rise, Greenford  
£385,000

**SAB**  
ESTATES



## Hill Rise

Greenford

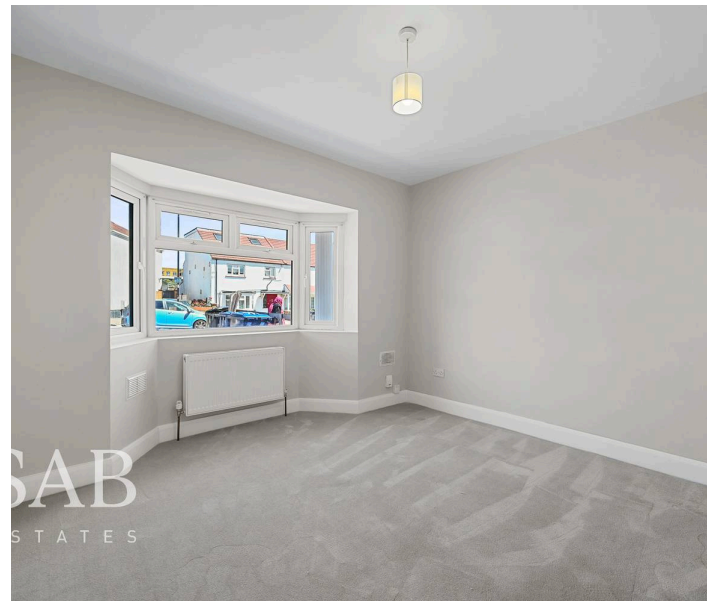
- Two double bedroom ground floor garden flat
- Recently refurbished throughout
- Spacious open-plan reception room/kitchen
- Private rear garden
- Off-street parking for one vehicle
- Share of freehold being arranged
- Chain-free sale
- Modern bathroom finished to a high standard
- 4-minute walk to Greenford Station
- Westway Cross Retail Park and local amenities within walking distance

Council Tax band: C

Tenure: Share of Freehold

EPC Energy Efficiency Rating: C

EPC Environmental Impact Rating: C



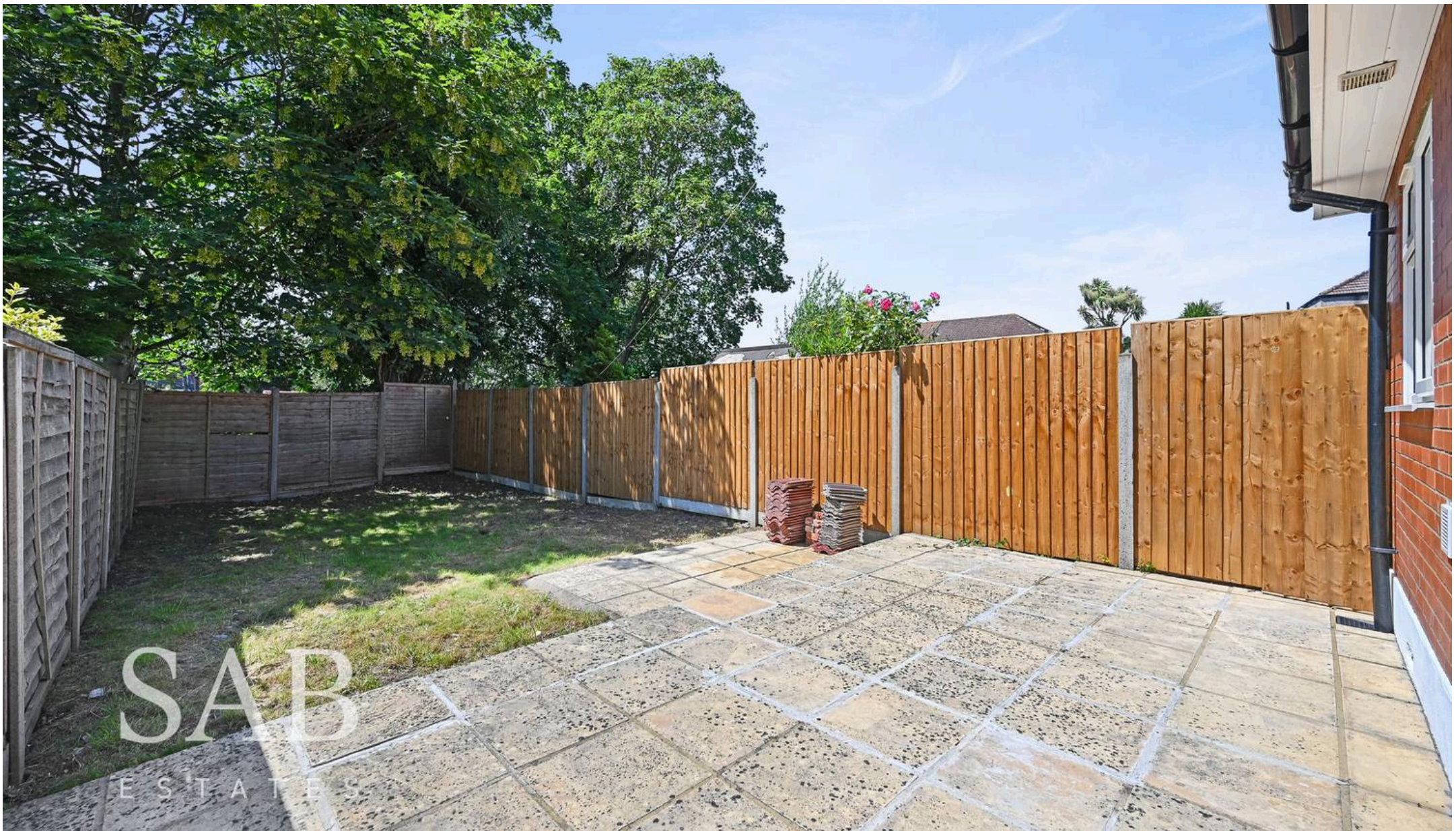


GROUND FLOOR  
GROSS INTERNAL  
FLOOR AREA 632 SQ FT

APPROX. GROSS INTERNAL FLOOR AREA: 632 SQ FT/ 59 SQM

This plan is for illustrative purposes only and should be used as such by any prospective client. Whilst every attempt has been made to ensure the accuracy of the Floor Plan contained here, measurements of the doors, windows, rooms and any other items are approximate and no responsibility is taken for any errors, omissions, or misstatement. The services, systems and appliances shown have not been tested and no guarantee as to the operability or efficiency can be given.





## SAB Estates

236-238 Ruislip Road, Greenford - UB6 9RS

020 8575 2929 • [info@sabestates.com](mailto:info@sabestates.com) • [www.sabestates.com/](http://www.sabestates.com/)