



Upper Town Road, Greenford
£525,000

SAB
ESTATES



Upper Town Road

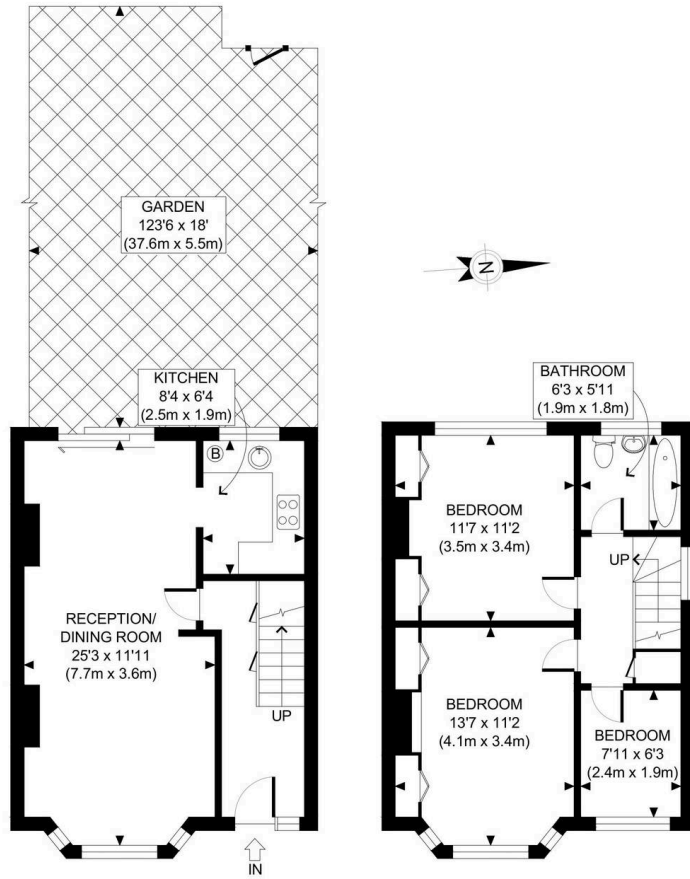
Greenford

- Three-Bedroom Mid-Terraced Family Home
- Spacious Through Lounge
- Separate Fitted Kitchen
- Two Double Bedrooms with Fitted Wardrobes
- Third Bedroom / Study Room
- Family Bathroom
- Approx. 120ft Rear Garden
- Off-Street Parking with Driveway for Two Cars
- Potential Rear & Loft Extensions (STPP)
- Complete Chain

Council Tax band: D

Tenure: Freehold





GROUND FLOOR
GROSS INTERNAL
FLOOR AREA 424 SQ FT

FIRST FLOOR
GROSS INTERNAL
FLOOR AREA 438 SQ FT

APPROX. GROSS INTERNAL FLOOR AREA: 862 SQ FT/ 80 SQM



This plan is for illustrative purposes only and should be used as such by any prospective client. Whilst every attempt has been made to ensure the accuracy of the Floor Plan contained here, measurements of the doors, windows, rooms and any other items are approximate and no responsibility is taken for any errors, omissions, or misstatement. The services, systems and appliances shown have not been tested and no guarantee as to the operability or efficiency can be given.



SAB Estates

236-238 Ruislip Road, Greenford - UB6 9RS

020 8575 2929 • info@sabestates.com • www.sabestates.com/