



Flat 4, 46 Clyde Road, West Didsbury, Manchester
Manchester

£185,000

**GASCOIGNE
HALMAN**

THE AREA'S LEADING ESTATE AGENCY



Flat 4

46 Clyde Road, West Didsbury, Manchester

Council Tax band: B

Tenure: Leasehold

EPC Energy Efficiency Rating: E

EPC Environmental Impact Rating: E

- Large Bedroom With Fitted Wardrobes
- Open-Plan Living/Dining Kitchen
- Modern Interior Throughout
- Stylish Refitted Bathroom
- Spacious One Bedroom Apartment
- Private West Facing Terrace



Flat 4

46 Clyde Road, West Didsbury, Manchester

We are pleased to introduce this modern and spacious lower ground floor apartment which is sure to be popular.

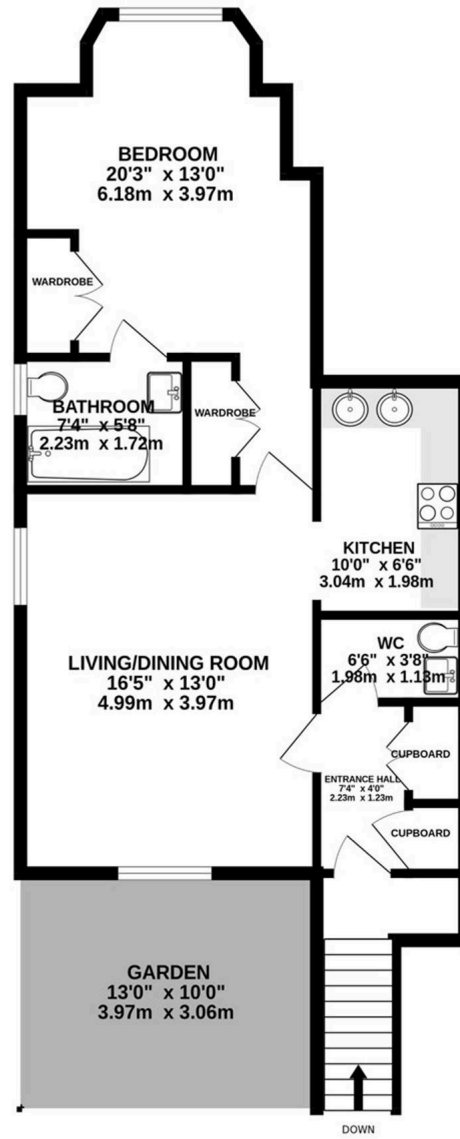
Well-presented throughout the property offers modern living with excellent room sizes and comprises internally; entrance hallway with useful utility cupboard and refitted WC, large living/dining room opening to a refitted contemporary kitchen, a generous sized bedroom with fitted wardrobes and a stylish refitted bathroom completes the internal accommodation. Externally the property has been very well-maintained with private resident mail boxes and walled frontage.

The apartment itself is accessed through its own private entrance to the rear of the property and boasts its very own private West facing terrace for Al fresco dining or outdoor seating area.

Superb West Didsbury location moments from Burton Road and Metrolink.



LOWER GROUND FLOOR
633 sq.ft. (58.8 sq.m.) approx.



TOTAL FLOOR AREA: 633 sq.ft. (58.8 sq.m.) approx.
Measurements are approximate. Not to scale. Illustrative purposes only
Made with Metropix ©2023



THE AREA'S LEADING ESTATE AGENCY