



Lower Icknield Way, Longwick

In Excess of £185,000

 **TIM RUSS**  
& Company



## Flat 1 Wellington House

- Spacious double bedroom
- Stylish ground floor apartment in a sought-after village setting
- Bright and spacious open-plan living, dining, and kitchen area
- Modern fitted kitchen with integrated appliances
- Beautifully presented throughout in contemporary neutral decor
- Well-maintained bathroom with modern finishes
- Allocated parking space for added convenience
- Surrounded by picturesque countryside and scenic walks
- Excellent transport links providing easy access to London and nearby towns



Set in the heart of the highly desirable village of Longwick, this beautifully presented one-bedroom ground floor apartment offers the perfect blend of countryside tranquillity and modern-day convenience. Surrounded by stunning rural scenery yet well connected to nearby towns and London, this charming home is ideally suited to first-time buyers, downsizers, or investors alike.

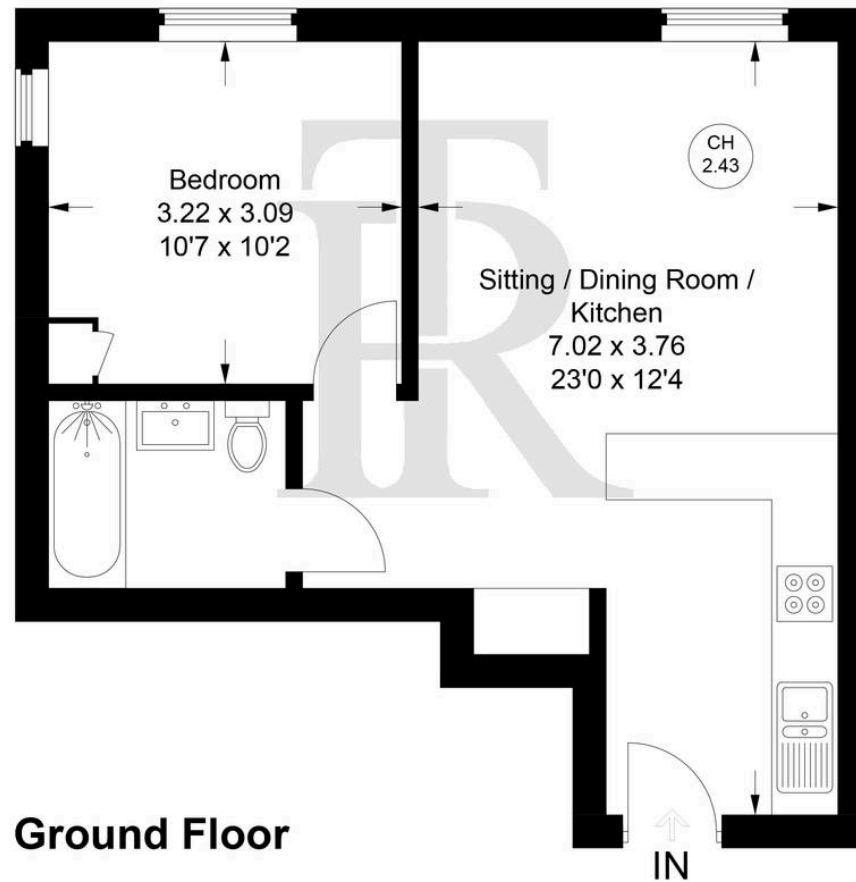
Step inside and discover a bright and welcoming open-plan living space designed with both comfort and practicality in mind. The contemporary fitted kitchen is well-equipped with modern appliances and seamlessly flows into the spacious lounge and dining area, creating a sociable environment that is perfect for entertaining guests, working from home, or simply unwinding at the end of the day.

Decorated throughout in elegant neutral tones, the apartment provides a stylish blank canvas ready for a new owner to make their own. The generous double bedroom offers a calm and comfortable retreat with ample space for furnishings and storage, while the modern bathroom is finished to a high standard, adding to the home's overall appeal.

Combining village charm, contemporary interiors, allocated parking, and excellent transport connections, this delightful apartment presents a fantastic opportunity to enjoy a relaxed lifestyle in a sought-after Buckinghamshire location.



CH  
2.43 = Ceiling Height



Ground Floor

## Flat 1, Wellington House, Lower Icknield Way, HP27 9RZ

Approximate Gross Internal Area = 40.5 sq m / 436 sq ft

Floor Plan produced for Tim Russ & Company by Media Arcade Ltd ©.

Illustration for identification purposes only. Window and door openings are approximate. Whilst every attempt is made to assure accuracy in the preparation of this plan, please check all dimensions, shapes and compass bearings before making any decisions reliant upon them.



# Tim Russ and Company

Tim Russ Ltd, 1 High Street - HP27 0AE

01844 275522 • p.risborough@timruss.co.uk • timruss.co.uk/

By law we must verify every seller and buyer for anti-money laundering purposes.

Checks are carried out by our partners at Lifetime Legal for a non-refundable £65 (incl. VAT) fee, paid directly to them.

For more information please visit our website.



Particulars described on our website and in marketing materials are for indicative purposes only; their complete accuracy cannot be guaranteed. Details such as boundary lines, rights of way, or property condition should not be treated as fact. Interested parties are advised to consult their own surveyor, solicitor, or other professional before committing to any expenditure or legal obligations.