



1 Redstone Road, Manchester  
Manchester

£550,000

**GASCOIGNE  
HALMAN**

THE AREA'S LEADING ESTATE AGENCY



# 1 Redstone Road

Manchester

Council Tax band: D

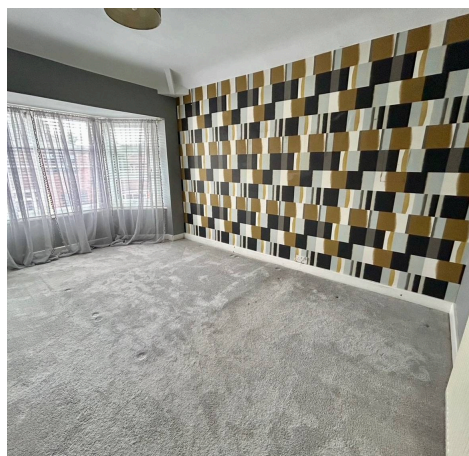
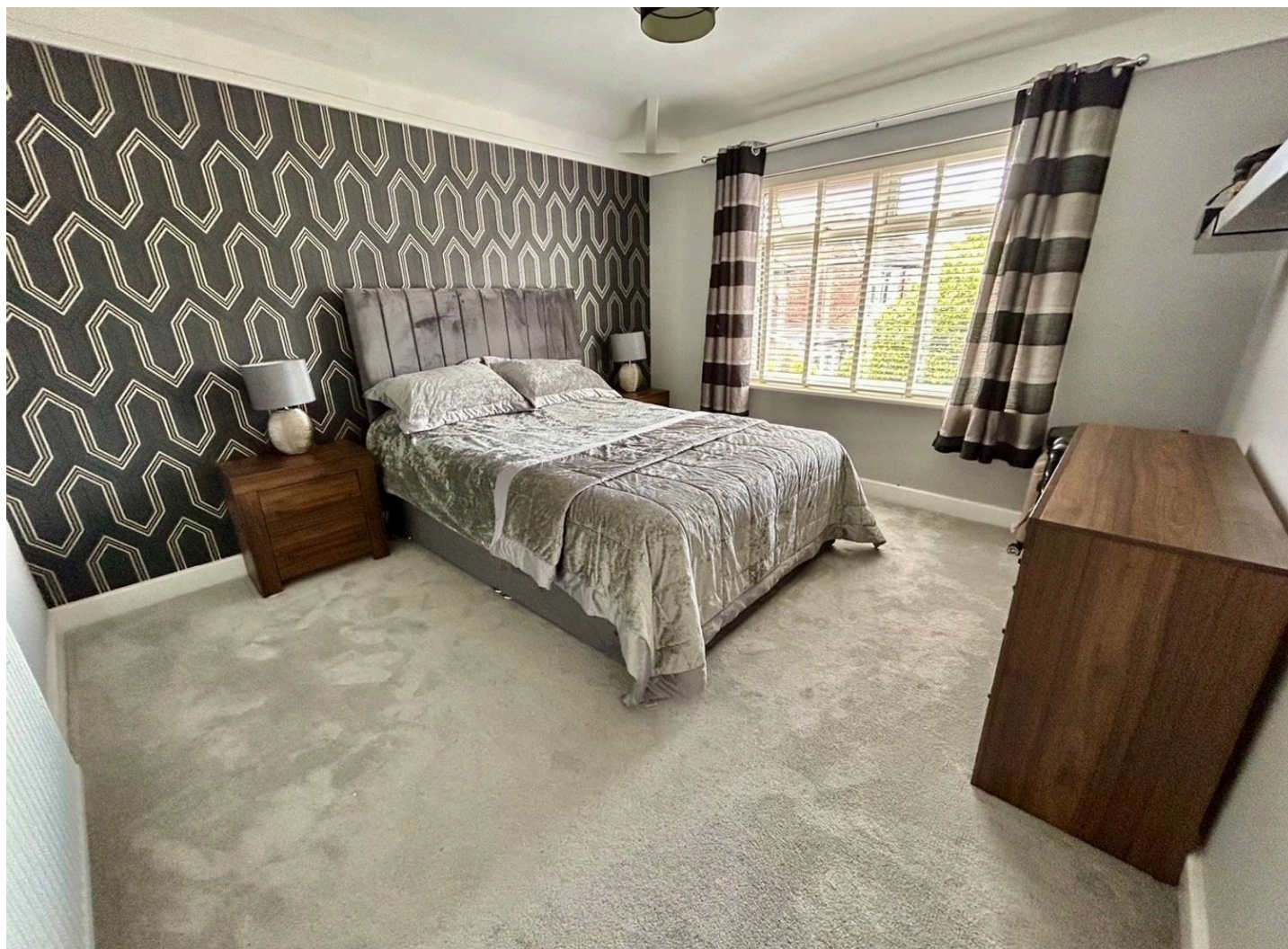
Tenure: Freehold

EPC Energy Efficiency Rating: D

EPC Environmental Impact Rating: E

- A Rare and Unique Opportunity to Acquire a Detached Property
- Situated in a Highly Sought After Residential Area
- Measuring a Highly Impressive 1111 SQ FT
- Two Large Reception Rooms and an Open Plan Dining Kitchen
- Three Good Sized Bedrooms and a Three Piece Contemporary Bathroom Suite
- Off Road Parking, garage and a Private Rear Generous Garden
- Located Only Moments From Excellent Transport Links and Local Amenities
- Potential to Extend Further (STPP)

The Property is well located with excellent links to Manchester City Centre and the national motorway network along nearby Kingsway (A34) and the A6. The centres of Didsbury and Burnage offer more than adequate day to day shopping requirements especially with the Tesco superstore being so close at hand. Parrs Wood Entertainment Complex is also nearby, facilities here include bowling, a multiplex cinema and a gymnasium. Schools and recreational facilities in the area are good.



# 1 Redstone Road

## Manchester

Presenting a rare and unique opportunity to acquire a detached three bedroom house, this impressive property is situated in a highly sought after residential area and offers a generous internal measurement of 1,111 square feet.

The home is thoughtfully arranged to provide versatile and spacious accommodation, featuring two large reception rooms that offer flexible living and entertaining spaces, as well as an open plan dining kitchen that is ideal for modern family life. The kitchen area is well appointed, with ample room for dining and socialising, making it the heart of the home and boasts an attractive velux windows and Bi-Folding doors which lead to the garden. The sitting room boasts a bay fronted window whilst the living room offers a log burning stove.

Upstairs, there are three good sized bedrooms, each offering comfortable proportions and plenty of natural light, along with a contemporary three piece bathroom suite that has been finished to a high standard and serves all three bedrooms.

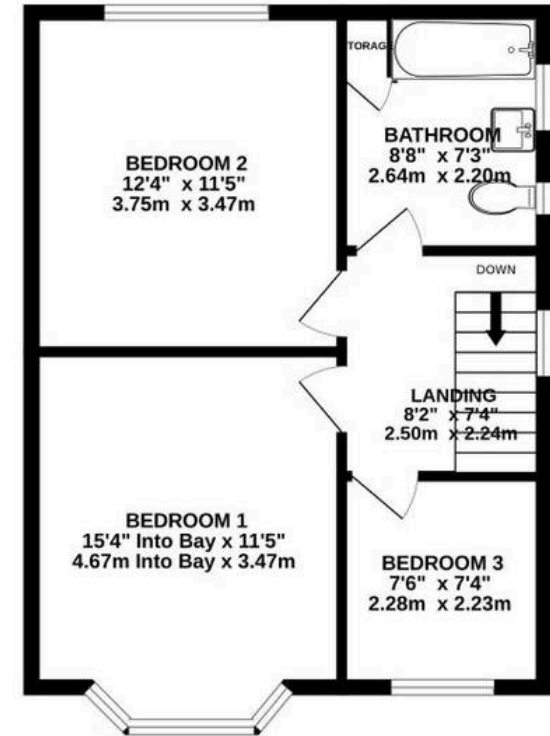
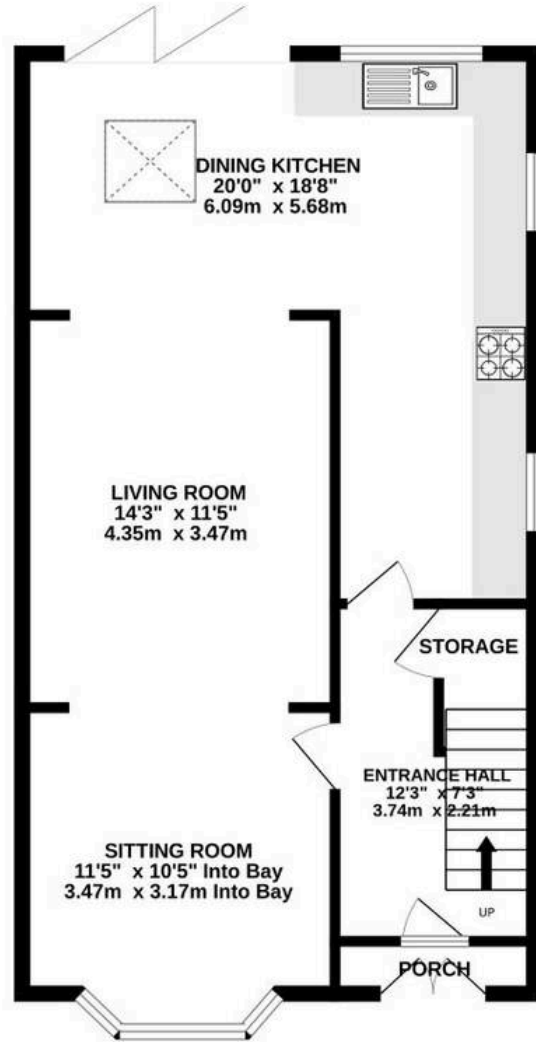
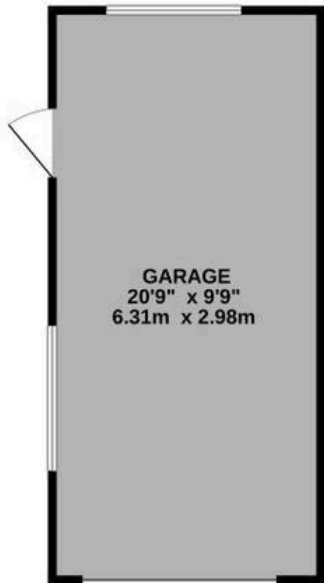
The property benefits from off road parking and enjoys a private rear garden, which is generous in size and contains a detached garage.

Located only moments from excellent transport links and a wide range of local amenities, this home is perfectly positioned for easy access to schools, shops, and commuter routes, ensuring a lifestyle of convenience and connectivity. The property also presents excellent potential to extend further (subject to the necessary planning permissions).



GROUND FLOOR  
645 sq.ft. (59.9 sq.m.) approx.

1ST FLOOR  
466 sq.ft. (43.3 sq.m.) approx.



TOTAL FLOOR AREA : 1111 sq.ft. (103.2 sq.m.) approx.  
Measurements are approximate. Not to scale. Illustrative purposes only  
Made with Metropix ©2026



THE AREA'S LEADING ESTATE AGENCY