



Whitethorn Street, Bow, E3

London

Guide Price £450,000



106 Whitethorn Street

London

- Three Bed Duplex
- Large Private Garden
- Close To Devons Road DLR
- Close To Amenities
- Ample Storage Throughout
- Spacious Living Space





Guide Price - £450,000 to £475,000

Welcome to this spacious three bed duplex, perfectly located just a short stroll from Devons Road DLR and a great selection of local amenities. Step inside and you'll find a bright, airy living space that's ideal for relaxing or entertaining friends. The kitchen is well laid out, making it easy to whip up your favourite meals, and there's plenty of storage throughout the property (no more cluttered cupboards here). Upstairs, three comfortable bedrooms offer a peaceful retreat at the end of the day, while the bathroom is a good family size. The property is set over two floors, giving you that house-like feel, and the layout is flexible to suit your lifestyle. Whether you're working from home, hosting guests or just looking for a bit more room to spread out, this duplex ticks all the boxes. With excellent transport links close by, commuting is a breeze, and you'll love having shops, cafes and other handy amenities within easy reach. If you're after a home that combines generous space, convenience and comfort, this one is definitely worth a look. Book your viewing today and see for yourself what makes this property such a great find.

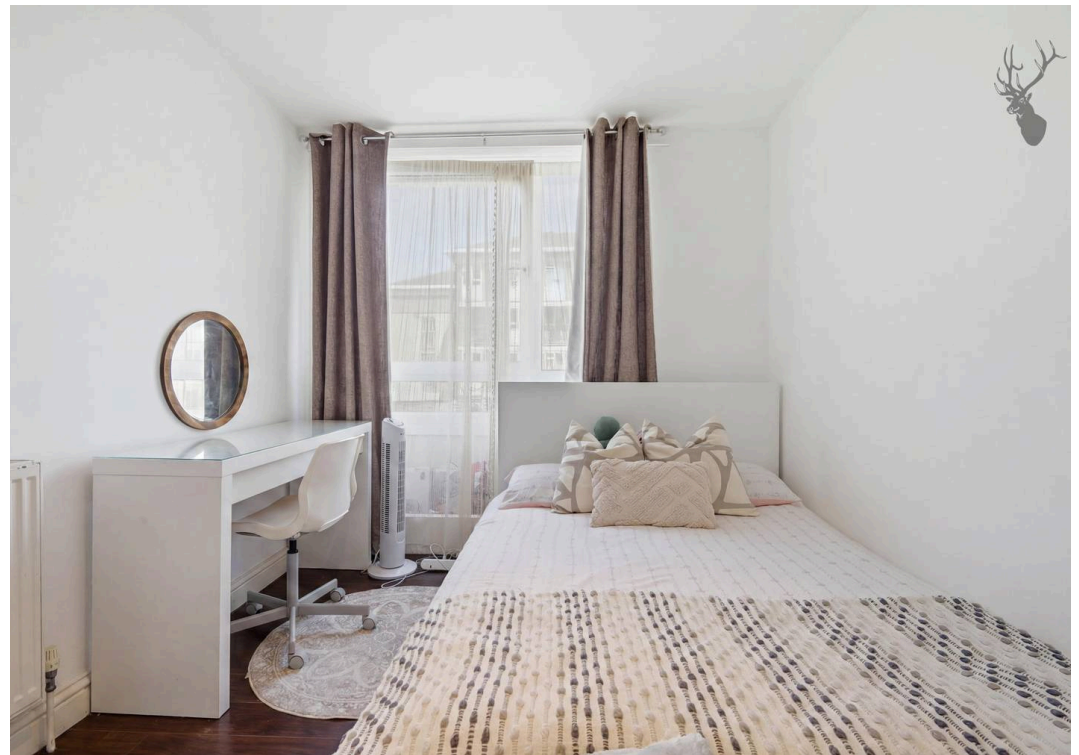
Council Tax band: C

Tenure: Leasehold

EPC Energy Efficiency Rating: C

EPC Environmental Impact Rating: C

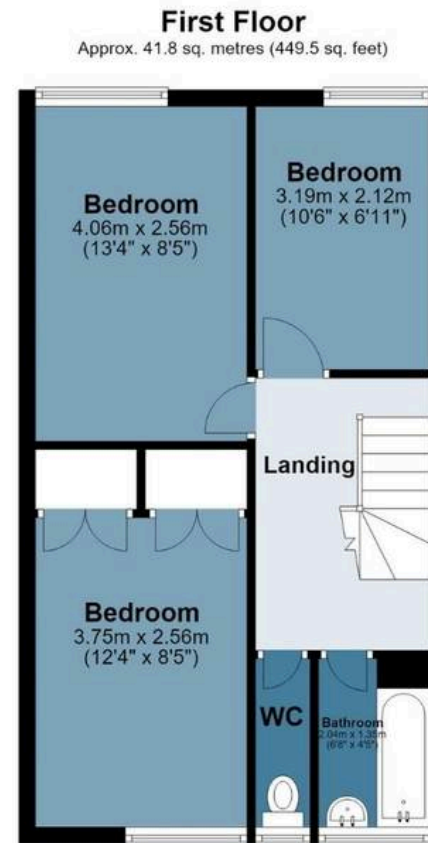






Whitethorn St

Approx. Gross Internal Area 78.5 sq. metres (844.7 sq. feet)



Measurements are approximate and for illustration purposes only. While we do not doubt the accuracy and completeness, we advise you conduct a careful independent assessment of the property to determine monetary value

FROM EAST LONDON ENERGY TO WEST ESSEX EASE

We Make Moving Home Easy.

At Butler and Stag, we do more than just connect London to West Essex – we make the move seamless. With offices spanning from vibrant East London to the tranquillity of West Essex, we understand the nuances of each area and the journey people take between them. Our marketing goes beyond standard listings, showcasing every property with precision, creativity, and reach that others simply can't match. Coupled with an unparalleled attention to detail, from first enquiry to final move-in, we ensure every client and customer feels informed, supported, and confident. Simply put, we do the little things that make a big difference, setting us apart in every step of the property experience.



LONDON STRATFORD SOUTH WOODFORD BUCKHURST HILL LOUGHTON EPPING BEYOND

Like what you see? Let's talk

Book your **FREE** valuation now



020 8102 1236

london@butlerandstag.com

508 Roman Road, Bow, London, E3 5LU

butlerandstag.uk

IMPORTANT NOTICE - These particulars have been prepared in good faith and they are not intended to constitute part of an offer or contract. We have not performed a structural survey on this property and the services, appliances and specific fittings have not been tested. All photographs, measurements, floor plans and distances referred to are given as a guide and should not be relied upon.

BUTLER & STAG

