



Kyle Court, Woodcrest Road, West Purley

OIEO £500,000 Share of Freehold

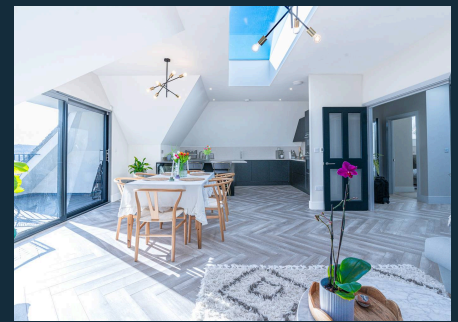


haboodle

Set on a beautiful tree-lined residential road in West Purley, this exceptional two-bedroom penthouse apartment forms part of Kyle Court, a stylish modern development completed in 2021. Finished to an impressive specification throughout, the property combines carefully considered design, generous natural light and a peaceful setting, all within easy reach of Purley, Reedham and Coulsdon.

The apartment is beautifully arranged around a spacious open-plan reception and kitchen, creating a bright and sociable living space with direct access onto a large private balcony. The kitchen has been designed by Krieder and features sleek cabinetry, a large central island, Quartz worktops and integrated Siemens appliances, while Oak Vintage Herringbone wood flooring with underfloor heating adds a warm, high-quality finish. Multiple skylights and well-planned storage further enhance the sense of space and practicality throughout.

There are two generous bedrooms, both benefiting from useful eaves



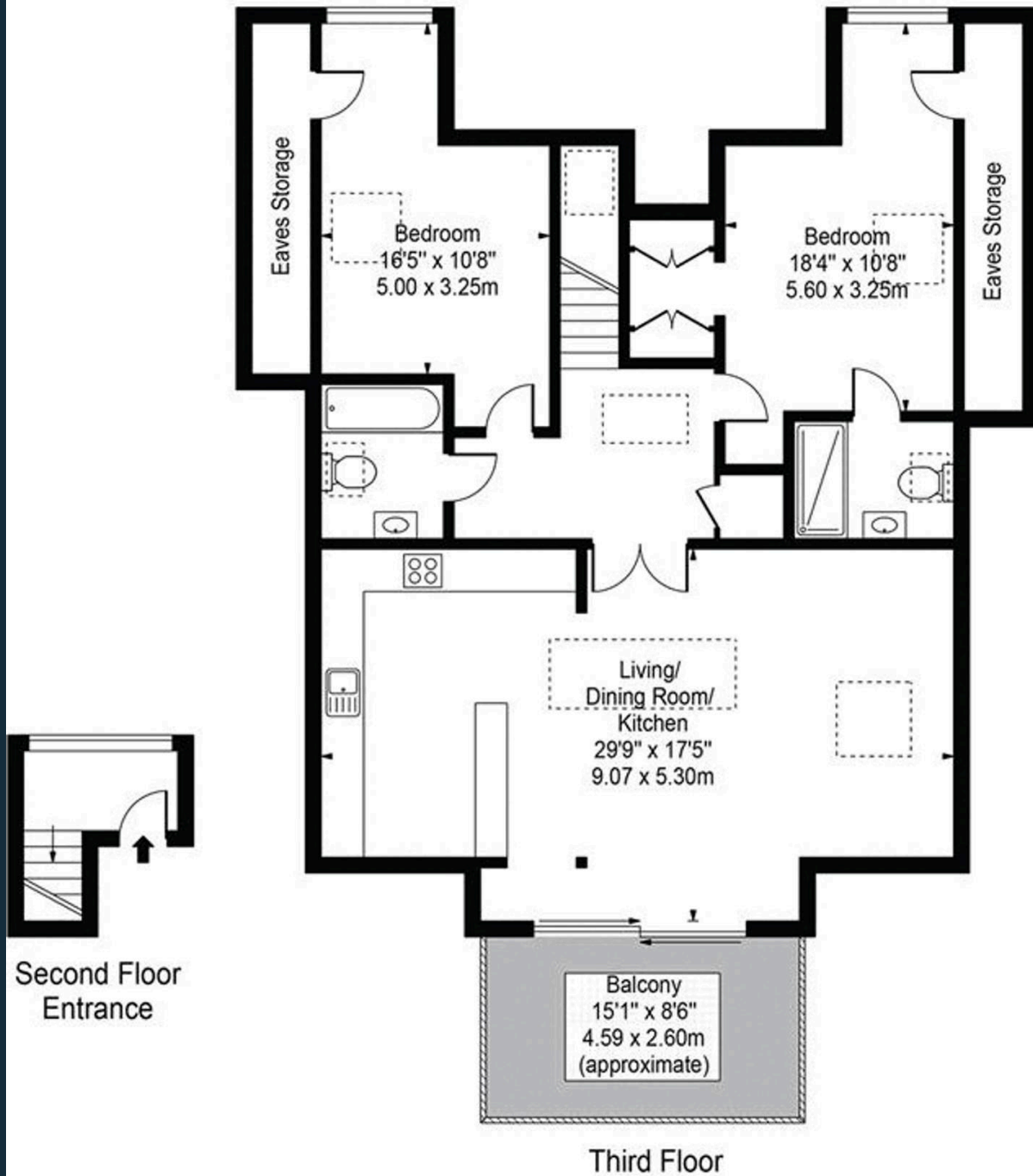
- › Stunning Two-Bedroom Penthouse Apartment in West Purley
- › Completed In 2021
- › Large Private Balcony With Open Views
- › High Specification Finish Throughout
- › Krieder Designed Kitchen With Siemens Appliances
- › Quartz Worktops And Large Central Island
- › Oak Vintage Herringbone Flooring
- › Allocated Parking And Secure Bike Storage
- › Share Of Freehold



Kyle Court,
Woodcrest Road, CR8 4FF

Approx. Total Internal Area 1236 Sq Ft - 114.83 Sq M
(Including Eaves Storages)

Approx. Gross Internal Area 1122 Sq Ft - 104.24 Sq M
(Excluding Eaves Storages)



For Illustration Purposes Only - Not To Scale - Floor Plan by interDesign Photography
www.interdesignphotography.com

This floor plan should be used as general outline for guidance only.
All measurements are approximate and for illustration purposes only as defined by the RICS Code of Measuring Practice ©2016.