



# 50 Hildreth Road

Prestwood, Great Missenden

- Well presented and much loved three bedroom family home
- Popular location close to village centre and local schooling
- Excellent kitchen/diner with breakfast bar and conservatory
- Welcoming entrance hall, cloakroom and bright living room
- Two double bedrooms, single/study and well appointed family bathroom
- Enclosed rear garden and pretty front garden on walkway position

Prestwood village centre has an excellent range of day to day facilities available including a variety of local shops, ie Butchers, Hairdressers, Newsagents, Post Office, Chemist, Florist and Supermarkets, together with Doctors' and Dentists' surgeries.

Nearby Great Missenden also offers a main line rail link into Central London which is ideal for the commuter. For more extensive requirements both High Wycombe and Amersham are approximately 4/5 miles from Prestwood. \*\*\*\*SCHOOL CATCHMENT

\*Primary- Prestwood Village Schools - infant and junior. Upper school- The Misbourne School Mixed Grammar- Chesham Grammar School, Sir Henry Floyd School Boys' grammar- Dr. Challoners Grammar school, Aylesbury Grammar School, The Royal Grammar School Girls' Grammar- Dr Challoners High School, Aylesbury High School. (we recommend you check availability at specific schools)

Council Tax band: C

Tenure: Freehold

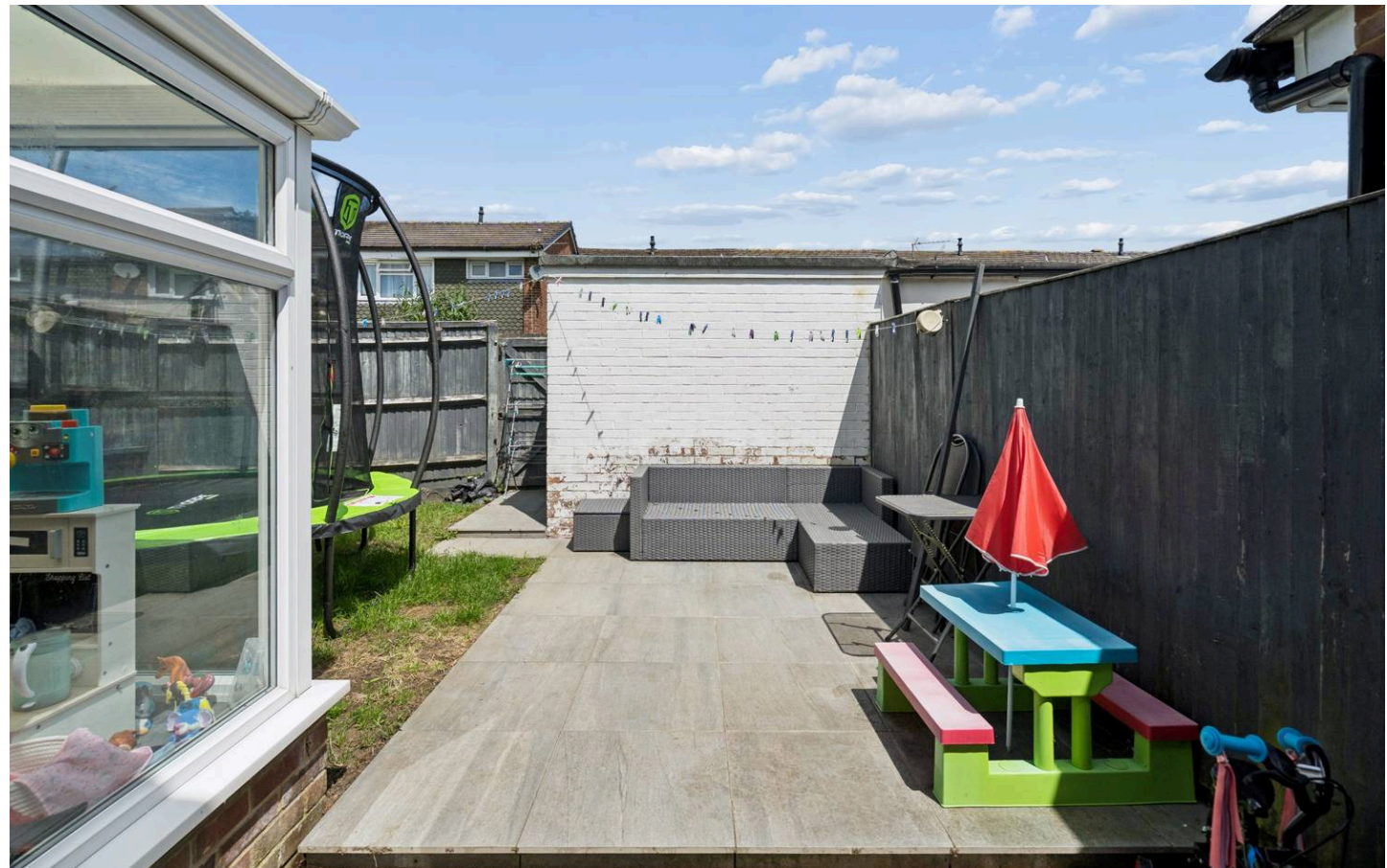


# 50 Hildreth Road

Prestwood, Great Missenden

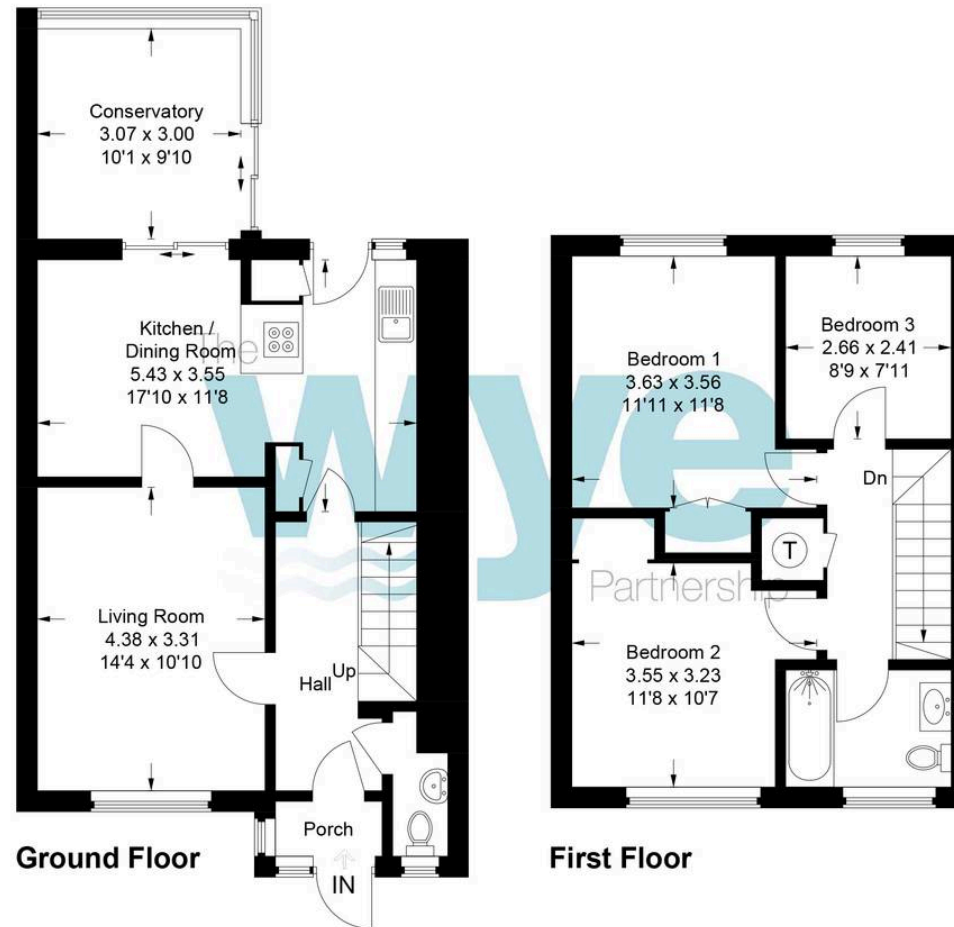
Well presented 3 bed mid-terrace near village centre. Bright living room, modern kitchen/diner, conservatory, stylish bathroom. Two doubles, one single. Move-in ready family home.

This well presented and much loved three bedroom mid-terraced house offers a warm and inviting atmosphere from the moment you step inside. Set in a popular location close to the village centre and local schooling, the home opens with a welcoming entrance hall that leads to a bright and airy living room, perfect for relaxing with family or entertaining friends. The heart of the home is the excellent kitchen/diner, fitted with sleek units and a handy breakfast bar, ideal for morning coffee or casual meals, and it flows seamlessly into a light-filled conservatory that's perfect for year-round enjoyment. Upstairs, you'll find two generous double bedrooms and a third single room, which also works brilliantly as a study or nursery, all complemented by a well appointed family bathroom featuring modern fixtures and a stylish finish. The thoughtful layout and tasteful décor throughout make this property move-in ready and easy to imagine as your next family home.



# 50 Hildreth Road, Prestwood, Bucks, HP16 0LY

Approximate Gross Internal Area  
Ground Floor = 55.3 sq m / 595 sq ft  
First Floor = 42.3 sq m / 455 sq ft  
Total = 97.6 sq m / 1,050 sq ft



This plan is for layout guidance only. Not drawn to scale unless stated. Windows and door openings are approximate. Whilst every care is taken in the preparation of this plan, please check all dimensions, shapes and compass bearings before making any decisions reliant upon them.

© C.J Property Marketing Ltd Produced for Wye Country - Prestwood

## The Wye Partnership Prestwood

120 High Street, Prestwood - HP16 9HD

01494 868000 • [prestwood@wyeres.co.uk](mailto:prestwood@wyeres.co.uk) • [www.wyeres.co.uk/](http://www.wyeres.co.uk/)

By law, each person involved in the sale/purchase of a property must have their identification verified to comply with Anti Money Laundering Regulations. These checks are outsourced and a charge of £36 (inc of VAT) is charged for each individual and paid directly to our supplier. |

