

A photograph of a three-story stone building with a central entrance and a garden. The building is constructed from light-colored stone blocks and features several multi-paned windows. A central black door is reached by a set of stone steps. A paved path leads from the foreground to the steps. The garden is enclosed by a black metal fence with decorative finials. Green foliage and tree branches are visible in the foreground and on the right side of the building.

*Symonds  
Taylor*

**39C Leazes Terrace, Newcastle Upon Tyne**

Newcastle Upon Tyne

Offers Over **£165,000**



## 39C Leazes Terrace

Newcastle Upon Tyne

This first floor apartment forms part of this mid terraced Grade II Listed Georgian townhouse in the heart of the city centre with views over Leazes Park ideally suited to first time buyers or those looking for a city centre property with great links to Newcastle University and the RVI.

### Accommodation comprises:

**Ground floor:** Communal hallway.

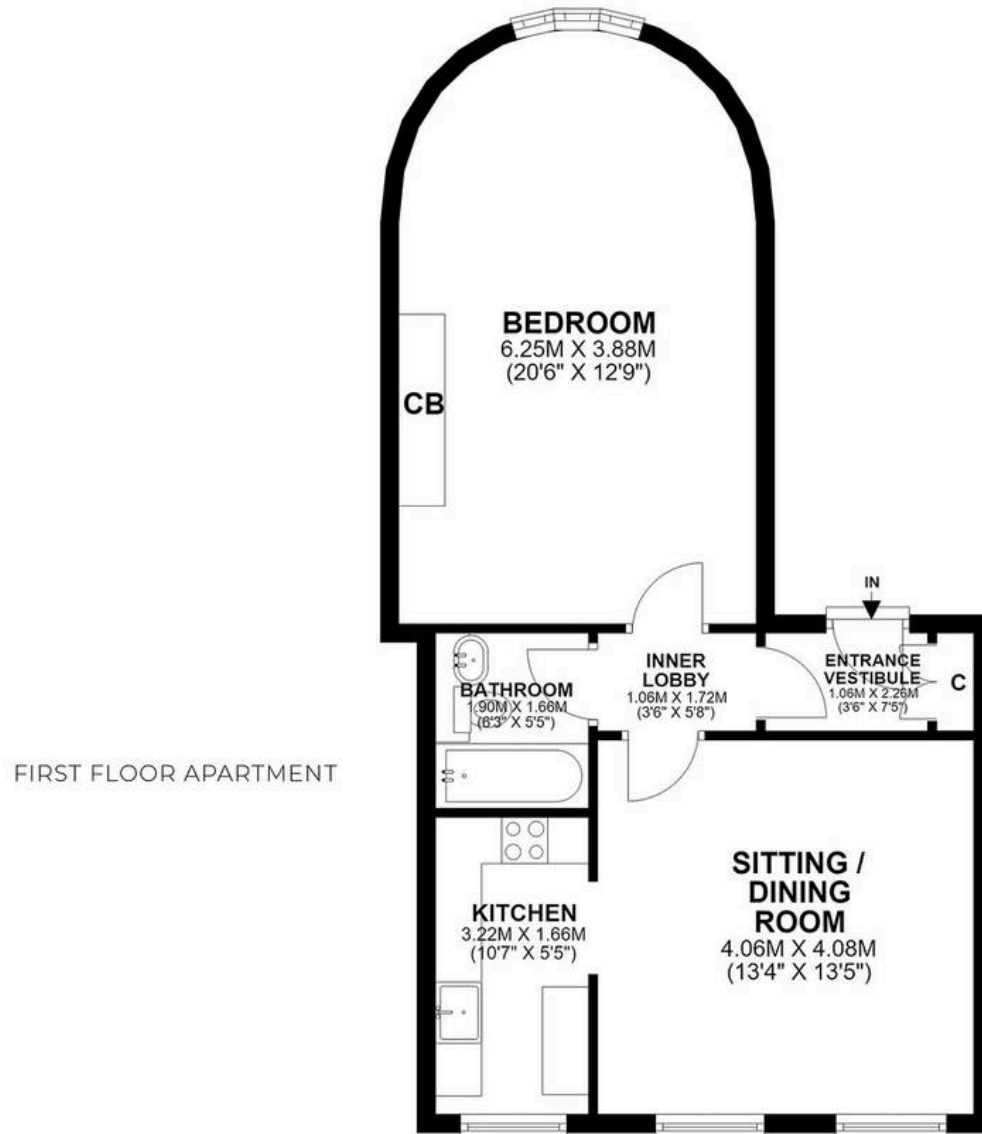
**First floor:** Communal landing, entrance lobby, hallway, sitting room, kitchen, double bedroom, bathroom/wc.

**Outside:** Communal front lawn garden, rear allocated parking space.

Council Tax band: C

Tenure: Leasehold





**FLAT C, 39 LEAZES TERRACE, NEWCASTLE UPON TYNE, NE1 4LZ**  
APPROXIMATE GROSS INTERNAL AREA 57 SQ M 612 SQ FT NOT TO SCALE - FOR ILLUSTRATIVE PURPOSES ONLY

*Symonds  
Taylor*



## Symonds Taylor

101 St. Georges Terrace, Jesmond - NE2 2DN

0191 338 9999 • [hello@symondstaylor.co.uk](mailto:hello@symondstaylor.co.uk) • [www.symondstaylor.co.uk](http://www.symondstaylor.co.uk)

All descriptions, plans or references to condition are given in good faith only. Whilst every endeavour is made to ensure accuracy, please check with us on any points of especial importance to you.