



4 Lewis Way Killarney Park, Nottingham - NG6 8LN

Guide Price £155,000

4 Lewis Way Killarney Park

Nottingham

Wake up to far-reaching views from this chain-free two-bed park home! Modern dining kitchen, spacious lounge, low maintenance gardens and driveway, all within the sought-after Sandy Oaks development.

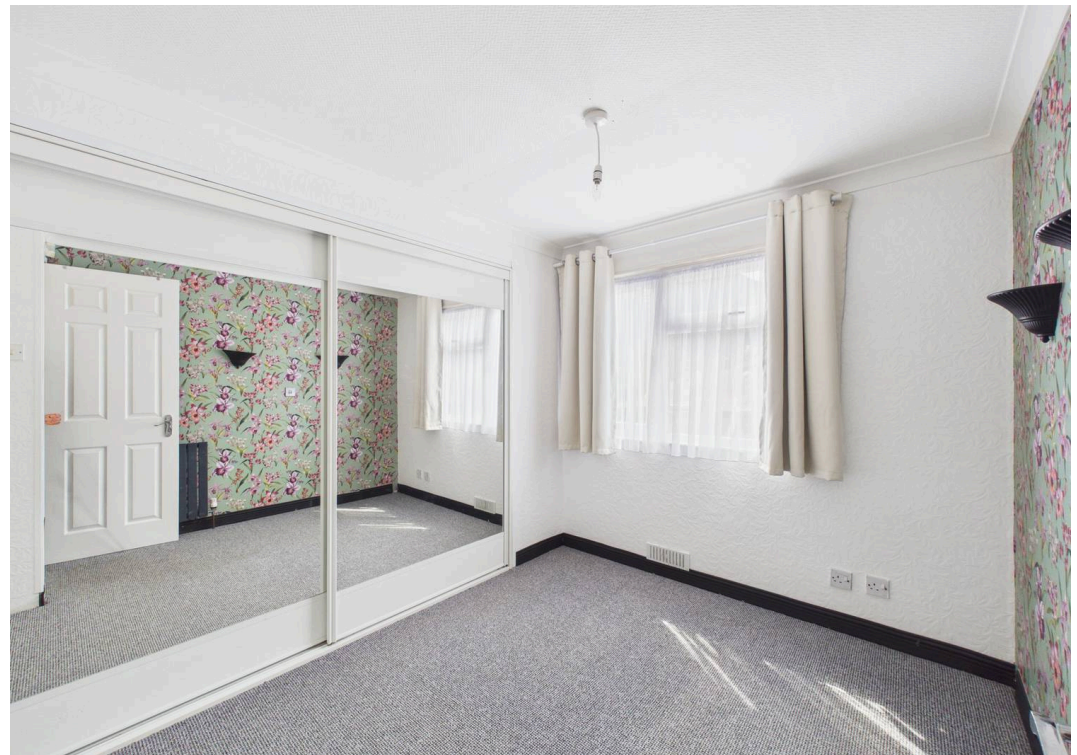
Council Tax band: A

Tenure: Non-Traditional Tenure

- Charming two-bedroom park home offering easy and practical single-storey living
- Peaceful Sandy Oaks setting with far-reaching views and nearby local amenities
- Exclusive over-45s development providing a relaxed and community lifestyle
- Bright and spacious lounge featuring fireplace and large box bay window
- Stylish dining kitchen with space for a dining table and chairs
- Two well-proportioned bedrooms both with sliding wardrobes
- Modern shower room with double-width enclosure and vanity basin unit
- Gas central heating powered by Calor gas-fed combination boiler
- Low-maintenance wrap-around gardens designed for easy outdoor enjoyment
- Driveway providing valuable off-street parking









Approximate total area⁽¹⁾

54.7 m²
587 ft²

(1) Excluding balconies and terraces

Calculations reference the RICS IPMS 3C standard. Measurements are approximate and not to scale. This floor plan is intended for illustration only.

GIRAFFE360



David James Estate Agents

98-100 Front Street, Arnold - NG5 7EJ

0115 955 5550 • arnold@david-james.com • www.david-james.com

These particulars are produced in good faith and are set out as a general guide only. Measurements are approximate and floor plans are for illustrative purposes only. Services have not been tested. We have established professional relationships with third-party suppliers for the provision of services to Clients, details of which can be found on the property listing page on our website.