



4 Glenmead Palmerston Road, Buckhurst Hill

Buckhurst Hill

Guide Price £325,000



4 Glenmead Palmerston Road

Buckhurst Hill

Ideally positioned just a short stroll from Buckhurst Hill Central Line Station and the vibrant Queen's Road, with its selection of boutique shops, cafés and restaurants, this beautifully presented first-floor apartment offers bright, spacious accommodation extending to approximately 860 Sq. ft. Further benefits include a private balcony, residents parking, and access to attractive communal gardens.

- £325,000-£350,000 Guide Price
- Two Double Bedroom Apartment
- Generous Lounge/ Dining Room With Balcony
- Separate Kitchen
- First Floor
- Communal Parking For Residents
- Excellent Location For Queens Road & Buckhurst Hill Central Line Station
- Extended Lease
- Chain Free





The apartment is entered via a welcoming hallway with a useful built-in storage cupboard and access to all principal rooms. At the heart of the home is a spacious dual-aspect living and dining room, flooded with natural light from windows to both the front and rear elevations. French doors open onto the west-facing balcony, which overlooks the well-maintained communal gardens. Featuring wooden flooring, café-style shutters and a tasteful neutral décor, this versatile space is ideal for relaxing, entertaining or working from home.

The modern kitchen is fitted with a comprehensive range of sleek white units, complemented by contrasting worktops and provides ample space for appliances ideal for everyday dining. Accommodation is completed by two well-proportioned double bedrooms, both benefiting from fitted wardrobes, and a spacious fully tiled bathroom fitted with a modern white suite.

Glenmead is an exclusive private development located in the heart of Buckhurst Hill. Perfectly situated moments from Queen's Road and the Central Line station, the property also enjoys easy access to the open green spaces of Epping Forest. Buckhurst Hill remains one of the area's most desirable locations, renowned for its excellent transport connections, independent shops, popular eateries and proximity to nature. The Central Line provides direct links to the City, Canary Wharf, the West End and Westfield Stratford, while the M25, M11 and major routes into London are all conveniently accessible.

Council Tax band: D

Tenure: Leasehold

EPC Energy Efficiency Rating: E

EPC Environmental Impact Rating: D





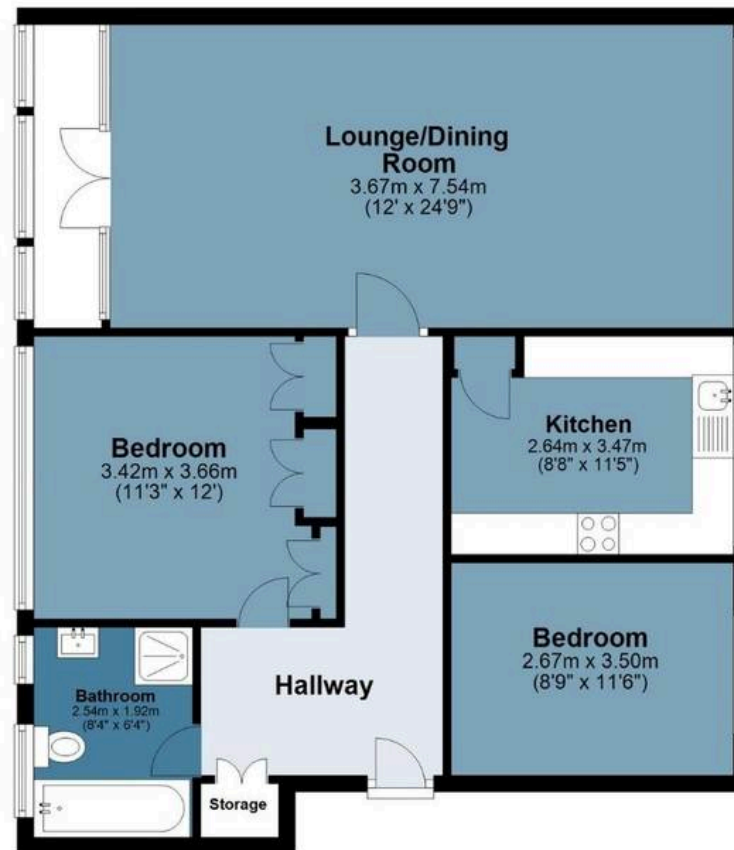


Glenmead

Approx. Gross Internal Area 79.8 sq. metres (858.8 sq. feet)

Ground Floor

Approx. 79.8 sq. metres (858.8 sq. feet)



Measurements are approximate and for illustration purposes only. While we do not doubt the accuracy and completeness, we advise you conduct a careful independent assessment of the property to determine monetary value

FROM EAST LONDON ENERGY TO WEST ESSEX EASE

We Make Moving Home Easy.

At Butler and Stag, we do more than just connect London to West Essex – we make the move seamless. With offices spanning from vibrant East London to the tranquillity of West Essex, we understand the nuances of each area and the journey people take between them. Our marketing goes beyond standard listings, showcasing every property with precision, creativity, and reach that others simply can't match. Coupled with an unparalleled attention to detail, from first enquiry to final move-in, we ensure every client and customer feels informed, supported, and confident. Simply put, we do the little things that make a big difference, setting us apart in every step of the property experience.



LONDON STRATFORD SOUTH WOODFORD BUCKHURST HILL LOUGHTON EPPING BEYOND

Like what you see? Let's talk

Book your **FREE** valuation now



01992 667666

theydon@butlerandstag.com

4 Forest Drive, Theydon Bois, CM16 7EY

[butlerandstag.uk](https://www.butlerandstag.uk)

IMPORTANT NOTICE - These particulars have been prepared in good faith and they are not intended to constitute part of an offer or contract. We have not performed a structural survey on this property and the services, appliances and specific fittings have not been tested. All photographs, measurements, floor plans and distances referred to are given as a guide and should not be relied upon.

BUTLER & STAG

