



5 Westleigh Road, Nottingham - NG8 6JU

Guide Price £230,000 - £240,000



5 Westleigh Road

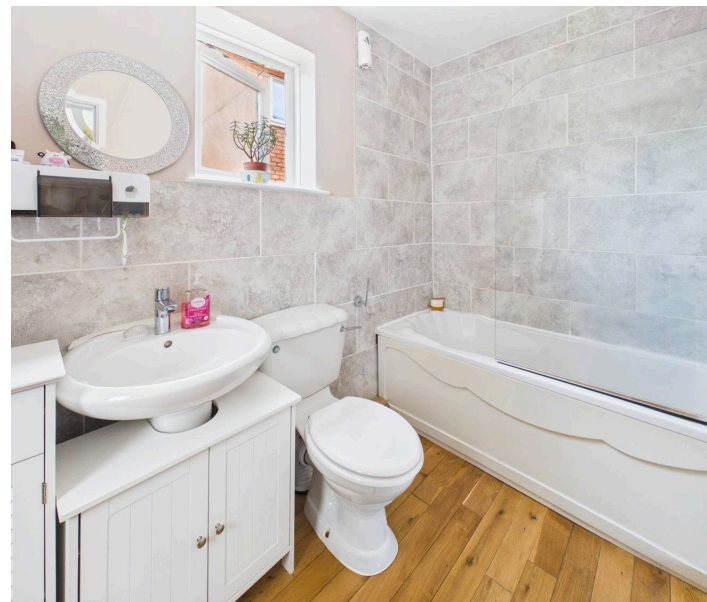
Nottingham

GUIDE PRICE £230,000–£240,000 Well-presented 4 bed semi-detached family home – ideally positioned for easy access to local amenities, schools and transport links to Nottingham City Centre. Viewing highly recommended!

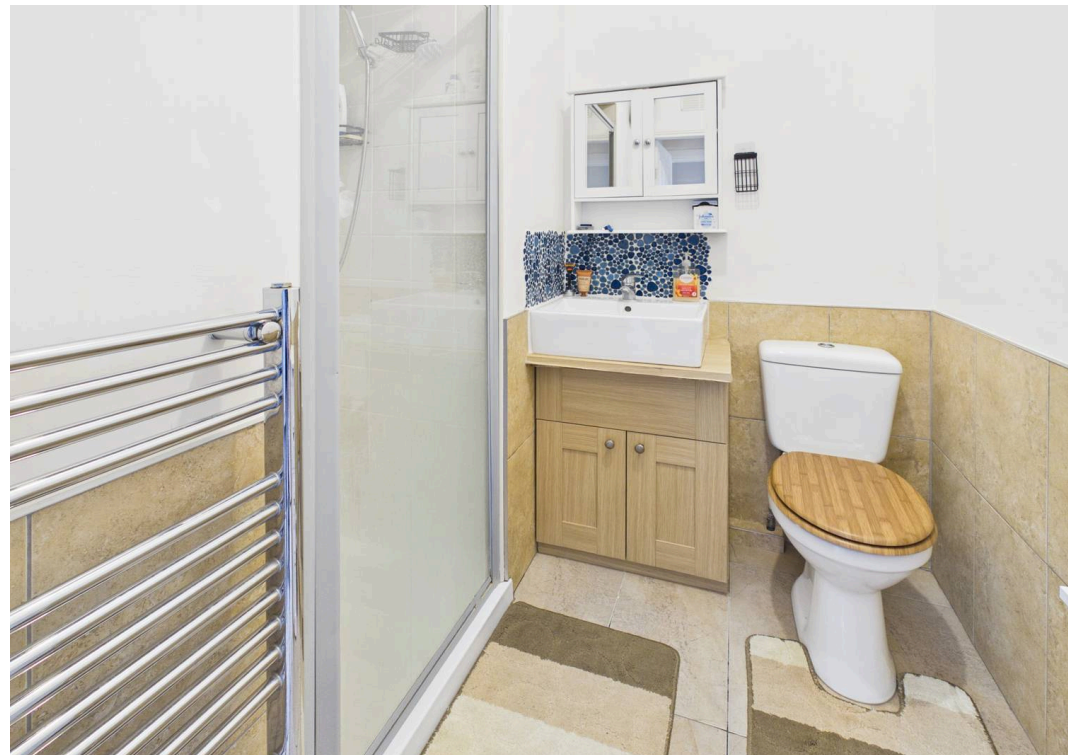
Council Tax band: A

Tenure: Freehold

- Semi-detached family home
- Popular residential location within easy reach of local amenities, schools and transport links to Nottingham City Centre
- Ideal for families seeking generous accommodation and flexible living space
- Bright and spacious lounge with feature French doors
- Adjoining and versatile front-facing dining room
- Fitted kitchen with integrated cooking appliances
- Modern ground floor bathroom and a further first floor shower room for convenience
- Four well-proportioned first floor bedrooms
- Good-sized, south-facing and enclosed rear garden with lawn and patio seating space
- Driveway provides parking and gated access to a detached garage for further parking or storage









Floor 0 Building 1



Floor 1 Building 1



Floor 0 Building 2

Approximate total area⁽¹⁾

107.4 m²

1157 ft²

(1) Excluding balconies and terraces

Calculations reference the RICS IPMS 3C standard. Measurements are approximate and not to scale. This floor plan is intended for illustration only.

GIRAFFE360



David James Estate Agents

98-100 Front Street, Arnold - NG5 7EJ

0115 955 5550 • arnold@david-james.com • www.david-james.com

These particulars are produced in good faith and are set out as a general guide only. Measurements are approximate and floor plans are for illustrative purposes only. Services have not been tested. We have established professional relationships with third-party suppliers for the provision of services to Clients, details of which can be found on the property listing page on our website.