

Milburys

SALES LETTING MANAGEMENT



## 6 Paxton, Stapleton - BS16 1WF

£1,395 pcm Leasehold

A Two Bedroom Apartment - Top Floor - Two Double Bedrooms - Well Presented - En-suite Shower Room - Allocated Parking - Unfurnished.

Council Tax band: C

Tenure: Leasehold

EPC Energy Efficiency Rating: C

EPC Environmental Impact Rating: E

## Description

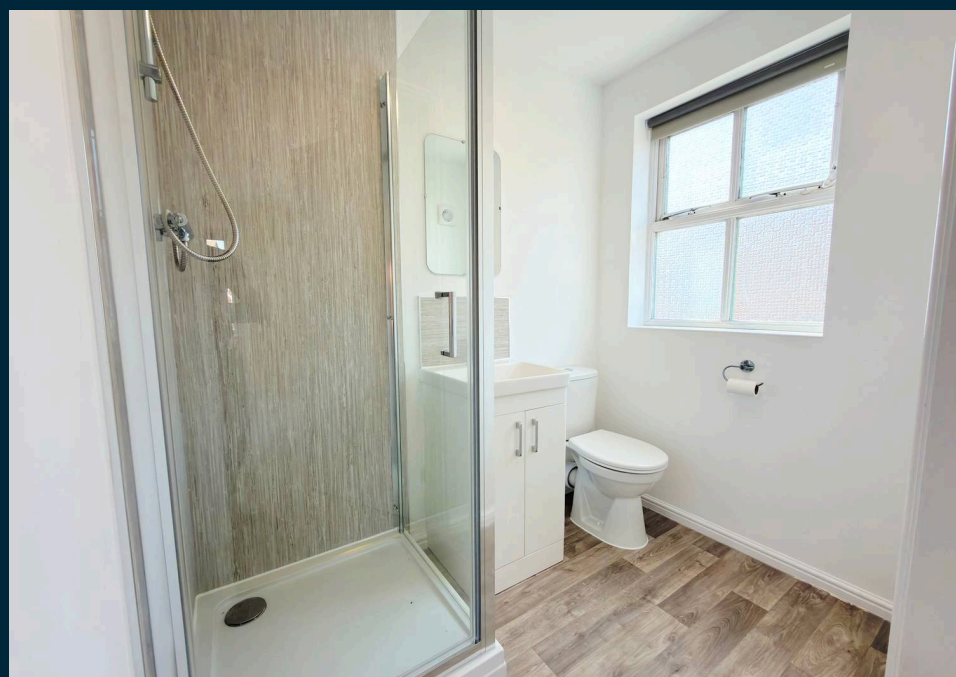
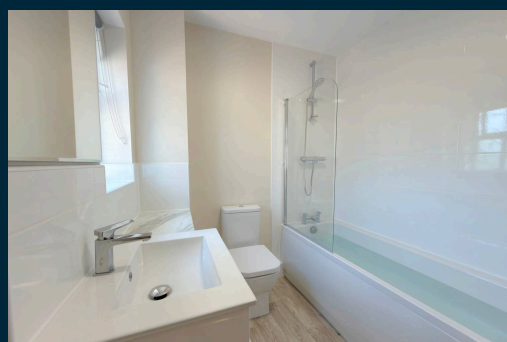
This newly refurbished and exceptionally well-presented two-bedroom apartment is located within the popular Stoke Park development, ideally positioned for easy access to Bristol Business Park, UWE and major transport links. The accommodation comprises a spacious lounge/dining room, a fitted kitchen complete with cooker and washing machine, a generous master bedroom with a newly fitted en-suite shower room, and a second double bedroom. The property has recently undergone refurbishment throughout, including a brand-new bathroom, new en-suite, fresh redecoration, new carpets and stylish vinyl flooring. Further benefits include Economy 7 heating, double glazing and allocated parking for two vehicles. Available now. Sorry, no pets or smokers.

## Situation

Stoke Park and Purdown lie on a long, prominent ridge which extends a green finger into the heart of the Bristol urban area. The landscape of Stoke Park extends from the ridge top down its south-eastern flank forming an intimate park as a counter-point to



- › Two Bedroom Apartment
- › Top Floor
- › Two Double Bedrooms
- › En-suite Shower Room
- › Allocated Parking
- › Freshly Refurbished



## Top Floor

Approx. 64.8 sq. metres (697.3 sq. feet)



Total area: approx. 64.8 sq. metres (697.3 sq. feet)

For Illustrative Purposes Only. Not to Scale.  
Plan produced using PlanUp.

You can include any text here. The text can be modified upon generating your brochure.

