



5 Biskey Howe Park, Windermere

Windermere

£795,000

5 Biskey Howe Park

Windermere

Presenting a rare opportunity to acquire a substantial four-bedroom detached house set within the heart of the Lake District National Park, offering a full renovation project in the highly sought-after location of Bowness on Windermere. This property occupies an impressive 0.75-acre plot and commands stunning, uninterrupted views across Lake Windermere internally and externally. The spacious accommodation is arranged to maximise the scenic outlooks and comprises an inner entrance hallway leading to two generous reception rooms, both featuring focal fireplaces (including a wood-burning stove). The open aspect kitchen flows seamlessly into a lake view dining room, providing an exceptional setting. All four bedrooms are well-proportioned, with two benefitting from ensuite facilities, complemented by a family bathroom and an additional W.C, ensuring ample convenience for residents and visitors. Direct access from the main living spaces to the grounds enhances the connection between the home and its picturesque surroundings. Practicality is further provided by an integral garage, carport, and extensive off-road parking, catering for multiple vehicles and storage needs. The property's layout and setting make it an ideal investment for those seeking to create a bespoke family home or holiday retreat, with significant potential for modernisation and value enhancement.









GARDEN

The plot is approx. 0.75 of an acre offering mature lawns, established planting, and trees contribute to the sense of privacy and tranquillity, while a range of elevated decking, terraces, and patio areas offer versatile options for relaxation and entertaining (subject to renovation).

GARAGE

Double Garage

Integral garage with carport catering for multiple vehicles and storage needs.

DRIVEWAY

2 Parking Spaces



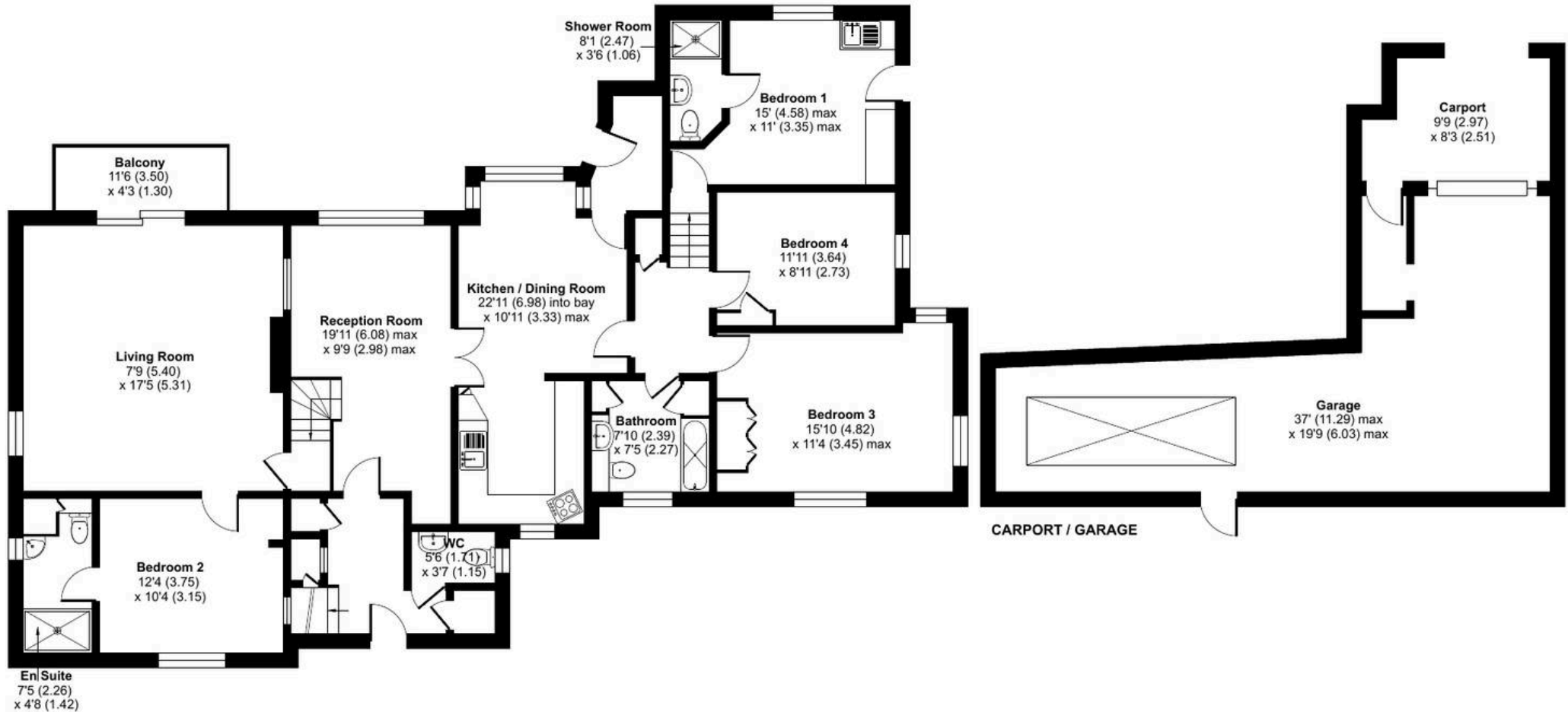
Biskey Howe Park, Windermere, LA23

Approximate Area = 1678 sq ft / 155.8 sq m(excludes carport)

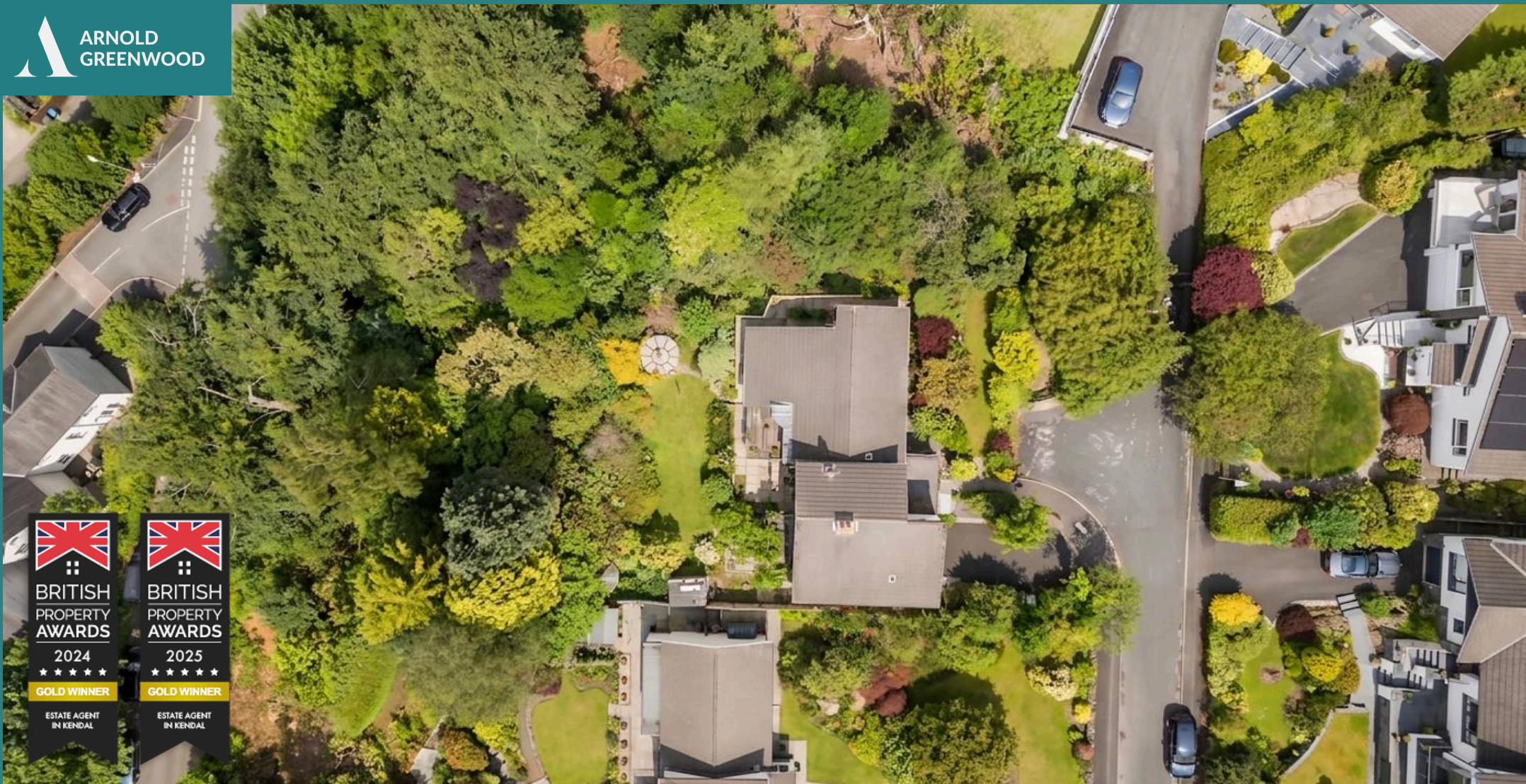
Garage = 463 sq ft / 43 sq m

Total = 2141 sq ft / 198.8 sq m

For identification only - Not to scale



GROUND FLOOR



Arnold Greenwood Estate Agents

Arnold Greenwood Solicitors, 8-10 Highgate - LA9 4SX

01539733383

kendal@arnoldgreenwood.co.uk

www.arnoldgreenwoodestateagency.co.uk/

Whilst every care has been taken in the preparation of these sales particulars, they are for guidance purposes only and no guarantee can be given as to the working condition of the various services and appliances. Measurements have been taken as accurately as possible but slight discrepancies may inadvertently occur. The agents have not tested appliances or central heating services. Interested applicants are advised to make their own enquiries and investigation before finalising their offer purchase. Money Laundering In the event of prospective purchasers making an offer on a property, in relation to the Money Laundering Regulations photographic ID and Utility bill showing your address will be required. Please contact the office for their information.

