



# Plane Trees Barn Meagill Lane, Blubberhouses

Otley

Guide Price £1,195,000



# MYRINGS



## Plane Trees Barn Meagill Lane

Blubberhouses, Otley

An exceptionally rare opportunity to acquire a beautifully presented Grade II listed, five-bedroom, four-bathroom stone-built barn conversion extending to over 3,400 sq ft of superbly appointed accommodation. The property is offered with over 3 acres of land, with a further approximately 9 acres available by separate negotiation, enjoying a peaceful and private position in the highly sought-after village of Blubberhouses, complemented by driveway parking for multiple vehicles and a double garage.

Council Tax band: G

Tenure: Freehold

- IMPRESSIVE GRADE II LISTED STONE-BUILT BARN CONVERSION
- OVER 3,400 SQ FT OF ACCOMMODATION
- FIVE DOUBLE BEDROOMS
- OFFERED WITH OVER 3 ACRES OF LAND
- 9 FURTHER ACRES AVAILABLE BY SEPARATE NEGOTIATION
- CHARACTER FEATURES INCLUDING EXPOSED BEAMS & FIREPLACES
- BEAUTIFULLY LANDSCAPED GARDENS & PATIO AREAS
- PRIVATE GRAVEL DRIVEWAY WITH TURNING CIRCLE
- GARAGE & EXTENSIVE PARKING

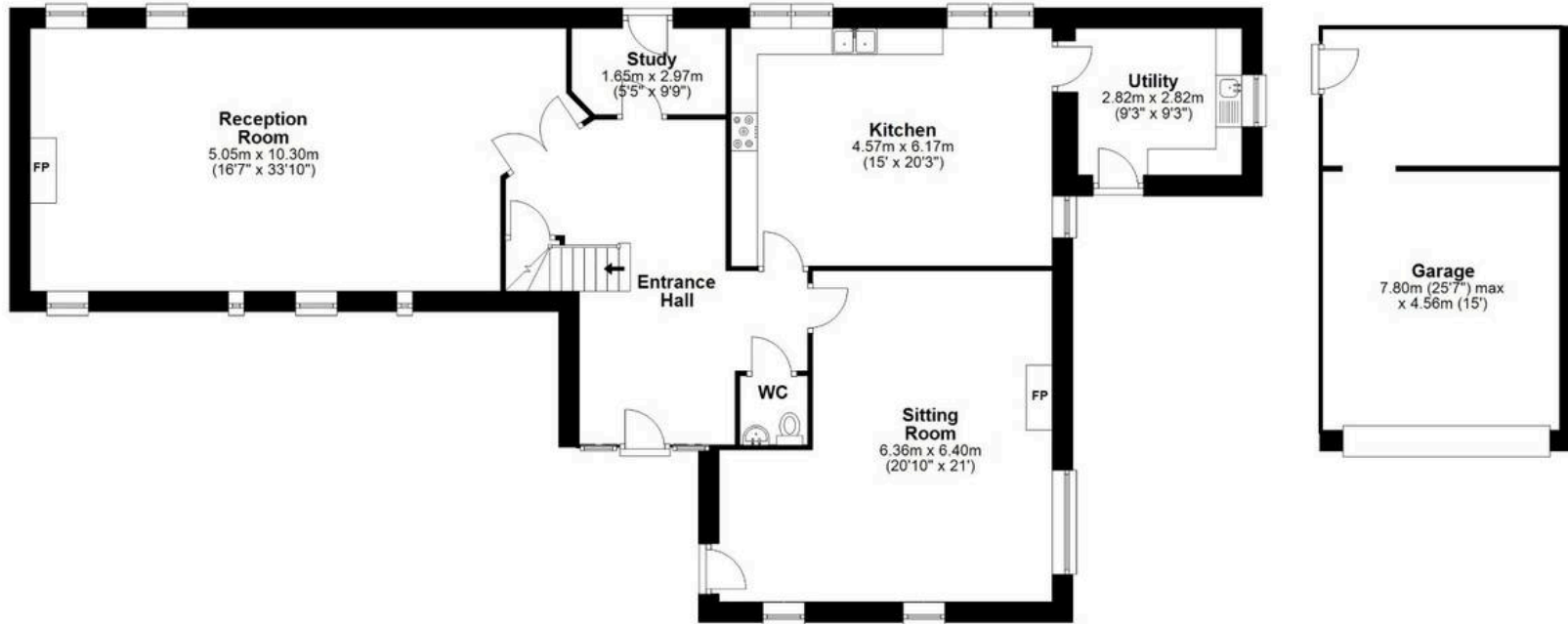


MYRINGS



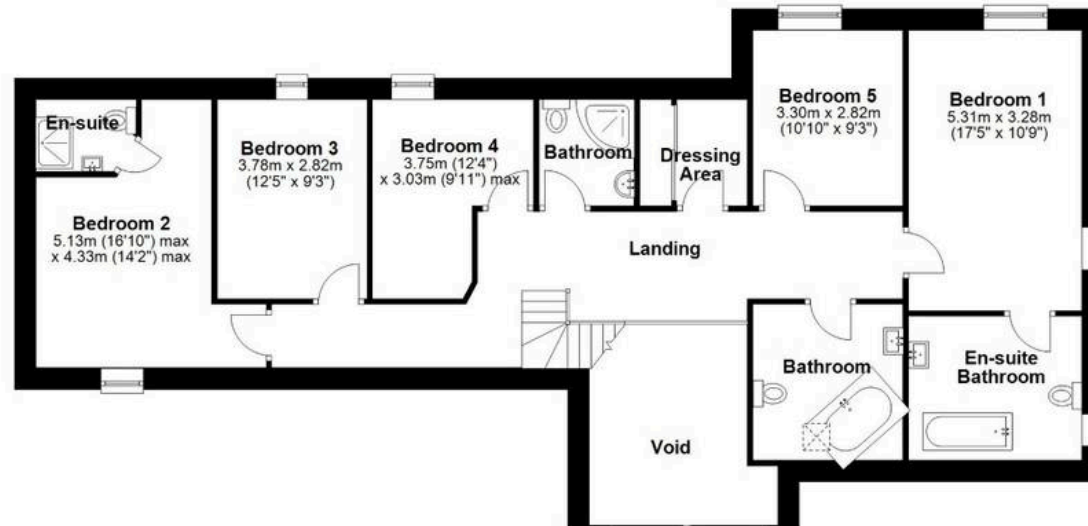
### Ground Floor

Approx. 188.9 sq. metres (2033.6 sq. feet)



### First Floor

Approx. 128.4 sq. metres (1381.7 sq. feet)



Total area: approx. 317.3 sq. metres (3415.3 sq. feet)

All measurements are approximate and for display purposes only.  
Plan produced using PlanUp.





## Myrings Estate Agents

Myrings Estate Agents Ltd, 10 Princes Square - HG1 1LX

01423 566400 ▪ [enquiries@myringsestateagents.com](mailto:enquiries@myringsestateagents.com) ▪ <http://myringsestateagents.com/>

