



## 15 Howieson Court, Nottingham - NG3 5UY

Guide Price £240,000 - £250,000



## 15 Howieson Court

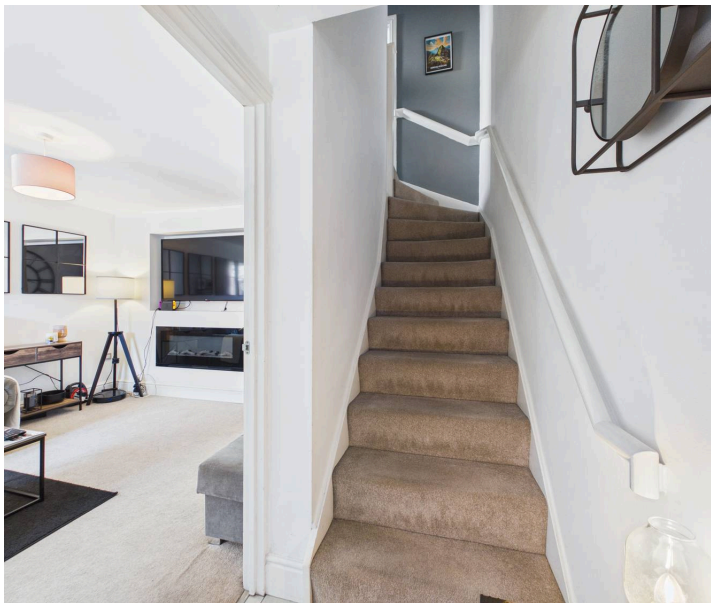
Nottingham

GUIDE PRICE £240,000-£250,000 Stylishly presented 3 bed semi-detached close to Mapperley's excellent amenities! Lounge, dining kitchen, en-suite and shower room plus parking and an enclosed garden!

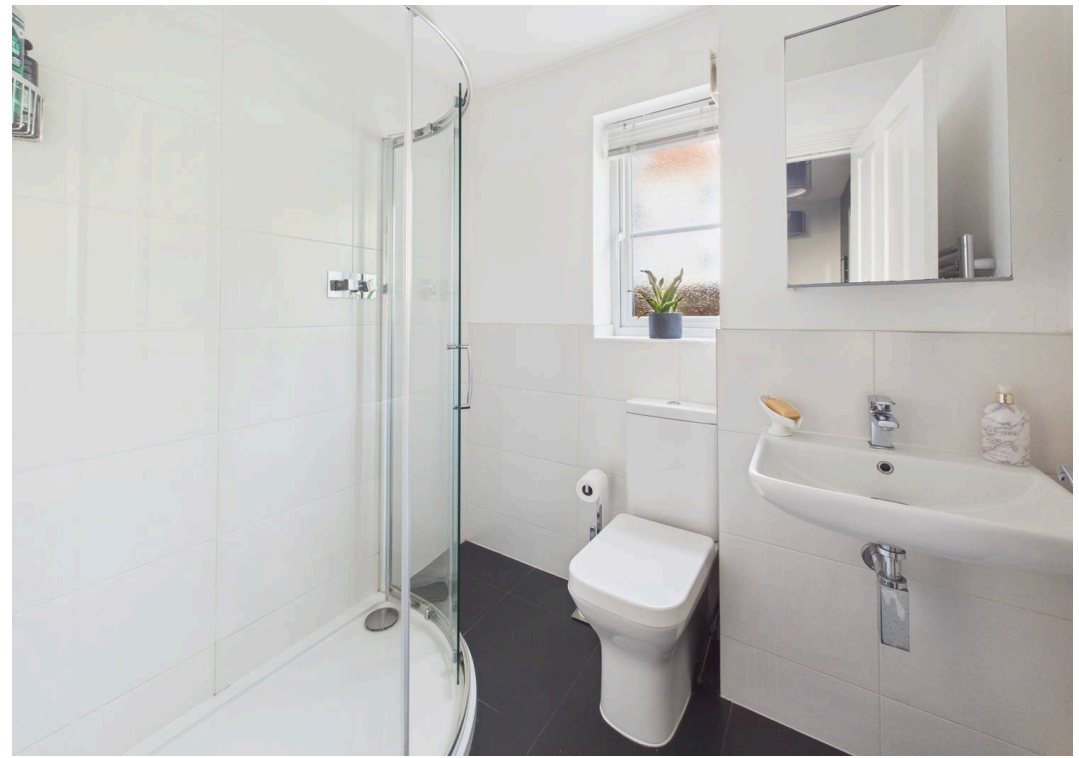
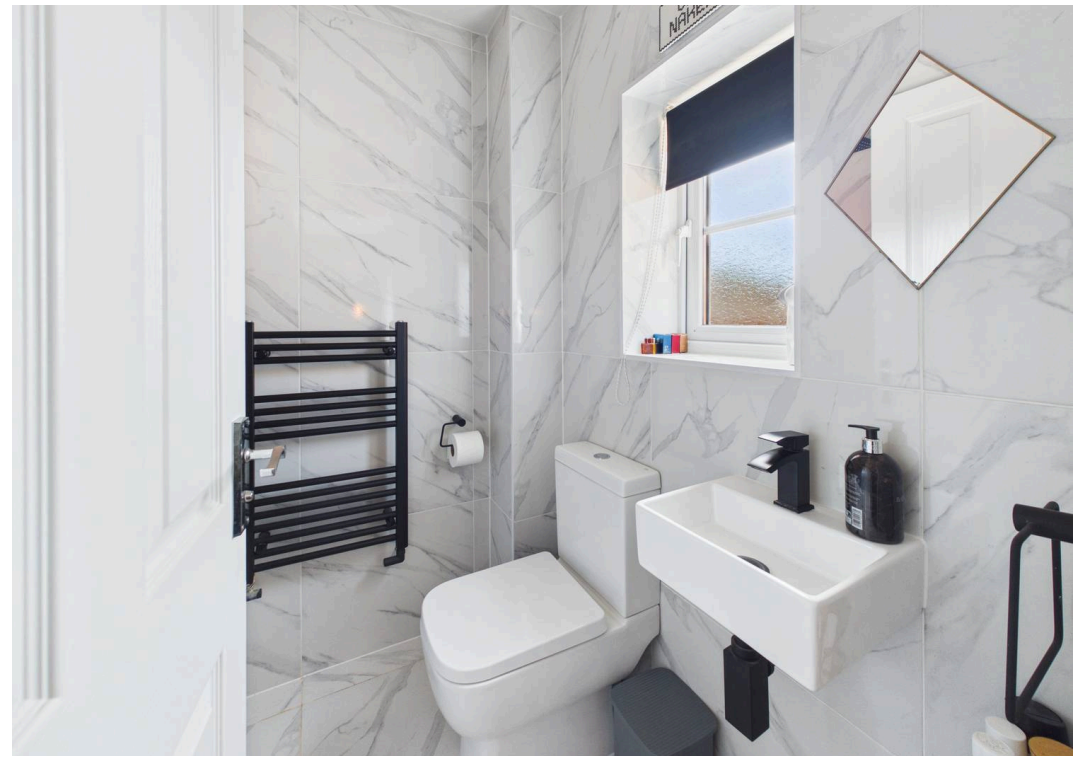
Council Tax band: C

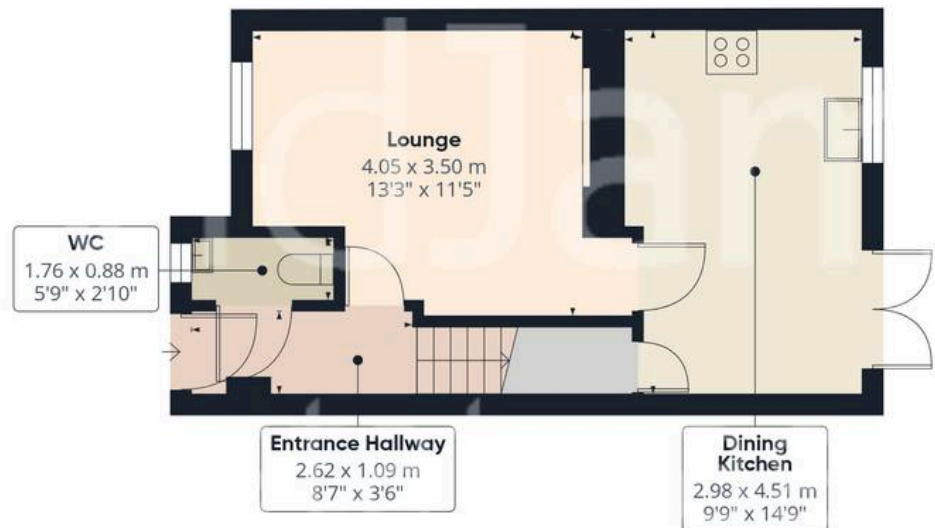
Tenure: Freehold

- Stylishly presented modern semi-detached home
- Tucked away in a cul-de-sac whilst close to Mapperley's excellent amenities, transport links and Gedling Country Park
- Offered to the market with no upward chain
- Bright lounge with a feature media wall
- Open-plan dining kitchen with integrated appliances and French doors
- Three first floor bedrooms (bedroom one with in-built wardrobes and en-suite)
- Main bedroom benefiting from a contemporary en-suite shower room
- First floor modern family shower room with a three-piece suite
- Enclosed rear garden offering a low-maintenance and enjoyable outdoor space with patio and lawn
- Tandem parking space for two vehicles



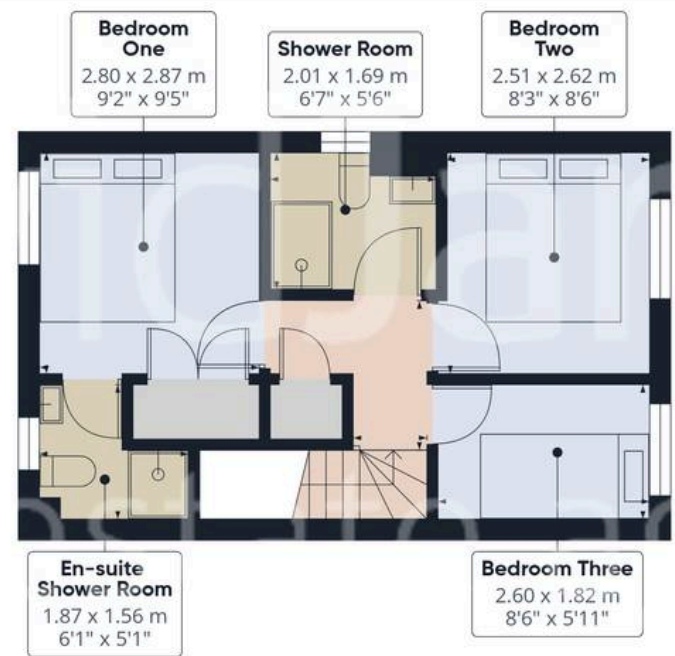






Floor 0

**Approximate total area<sup>(1)</sup>**  
62.2 m<sup>2</sup>  
670 ft<sup>2</sup>



Floor 1



(1) Excluding balconies and terraces

Calculations reference the RICS IPMS 3C standard. Measurements are approximate and not to scale. This floor plan is intended for illustration only.



## David James Estate Agents

David James Estate Agents, 45B Plains Road – NG3 5JU

0115 962 4213 • [mapperley@david-james.com](mailto:mapperley@david-james.com) • [www.david-james.com](http://www.david-james.com)

These particulars are produced in good faith and are set out as a general guide only. Measurements are approximate and floor plans are for illustrative purposes only. Services have not been tested. We have established professional relationships with third-party suppliers for the provision of services to Clients, details of which can be found on the property listing page on our website.