



Queslett Road East, Sutton Coldfield - B74 2EX
£375,000

 **MOORHOUSE**



Queslett Road East

Sutton Coldfield

Upon entering the property, you are greeted by a welcoming hallway that sets the tone for the accommodation to follow. The lounge, positioned to the front of the house, features a large window that fills the room with natural light, creating a bright and inviting atmosphere. Adjacent to the lounge, the dining room offers ample space for family meals and entertaining, with direct access to the kitchen, which is ready for modernisation and personalisation.

The first-floor landing leads to three generous bedrooms, each providing comfortable proportions and flexibility for family living, guest accommodation, or a home office. The family bathroom completes the internal layout, offering scope to create a contemporary suite tailored to your tastes.

The property's potential is further enhanced by its large driveway, which provides off-road parking for multiple vehicles, and a garage, ideal for additional storage or secure parking.

The rear garden is a true highlight, featuring a generous expanse of lawn bordered by mature shrubs and planting, providing a private and tranquil setting for relaxation, play, or al fresco dining. The size and layout of the garden offer excellent potential for landscaping, extension (subject to planning permission), or the creation of dedicated seating and entertaining areas.



- An ideal opportunity to acquire a spacious semi detached home with huge potential
- Highly popular location





FEATURES:

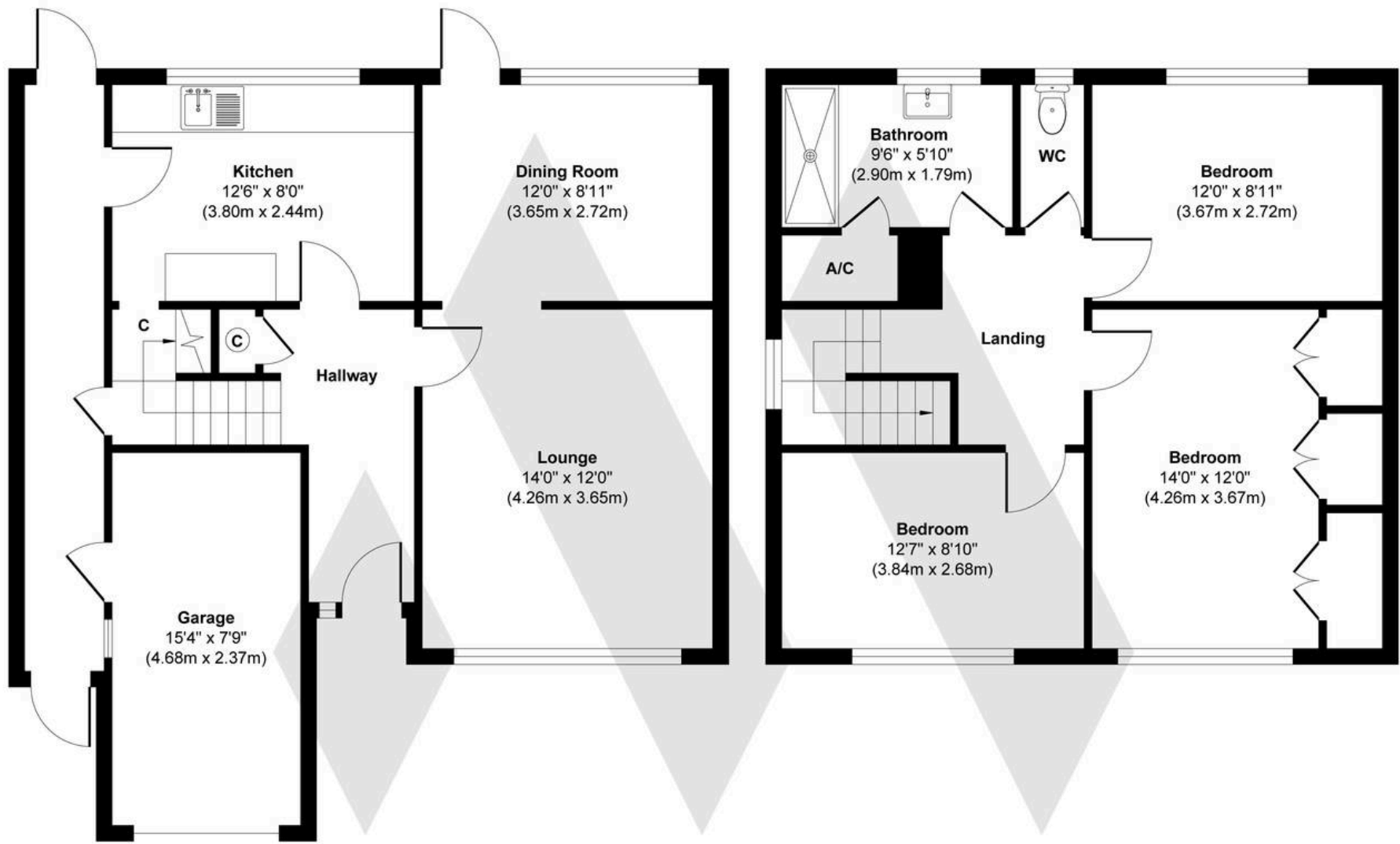
- An ideal opportunity to acquire a spacious semi detached home with huge potential
- Highly popular location
- Welcoming hallway
- Lounge and dining room
- Kitchen
- Three generous bedrooms and bathroom
- Large driveway and garage
- Gardens to front and rear

INTERESTED?

fouroaks@moorhouse-property.co.uk

0121 308 3355





Ground Floor
Approximate Floor Area
710 sq. ft
(65.92 sq. m)

First Floor
Approximate Floor Area
575 sq. ft
(53.45 sq. m)

Approx. Gross Internal Floor Area 1285 sq. ft / 119.37 sq. m (Including Garage)

Illustration for identification purposes only, measurements are approximate, not to scale.

Produced by Elements Property

MOORHOUSE

