



25 Gretton Road, Nottingham - NG3 5JT

Guide Price **£495,000**





25 Gretton Road

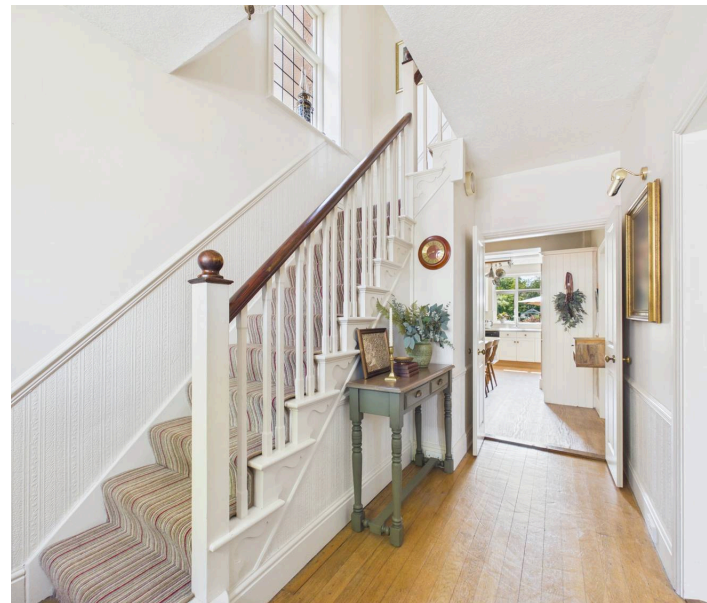
Nottingham

Beautifully-presented 4 bed traditional detached home close to Mapperley's amenities! 2 reception rooms, open-plan dining/kitchen, bathroom and en-suite plus a southerly-garden, drive and garage!

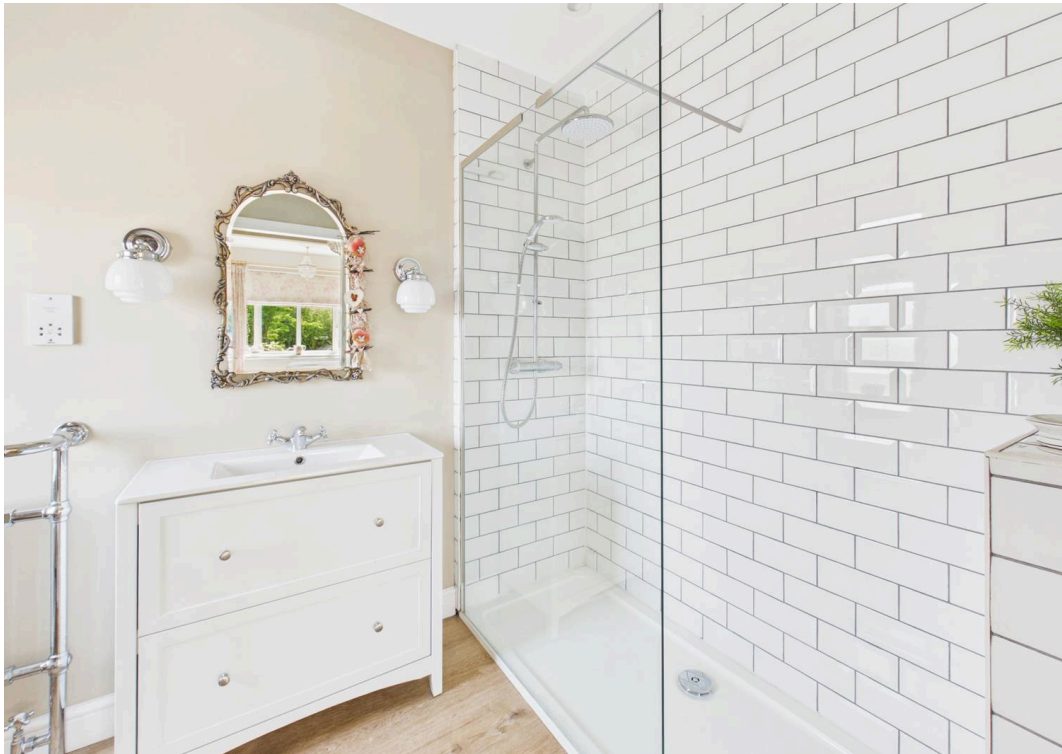
Council Tax band: D

Tenure: Freehold

- Beautifully-presented and extended traditional detached family home
- Highly desirable location within easy reach of Mapperley's nearby amenities and transport links
- Welcoming entrance hall with original oak feature flooring
- Bright and spacious lounge with original flooring, a feature gas fire and French doors
- Separate versatile dining room with a feature gas fire and walk-in bow window
- Superb open-plan dining kitchen with integrated appliances
- Four first floor bedrooms (main bedroom with fitted wardrobes and a private en-suite)
- Family bathroom with a four-piece suite (including both a bath and separate shower enclosure)
- Fantastic southerly-facing garden with patio seating space, lawn and established planting
- Long private driveway leading to a detached garage with carport, workshop and store









Floor 0 Building 1



Floor 1 Building 1



Floor 0 Building 2

Approximate total area⁽¹⁾

178 m²

1914 ft²

(1) Excluding balconies and terraces

Calculations reference the RICS IPMS 3C standard. Measurements are approximate and not to scale. This floor plan is intended for illustration only.

GIRAFFE360



David James Estate Agents

David James Estate Agents, 45B Plains Road - NG3 5JU

0115 962 4213 • mapperley@david-james.com • www.david-james.com

These particulars are produced in good faith and are set out as a general guide only. Measurements are approximate and floor plans are for illustrative purposes only. Services have not been tested. We have established professional relationships with third-party suppliers for the provision of services to Clients, details of which can be found on the property listing page on our website.