



15 Moring Road, London

£600,000 Leasehold

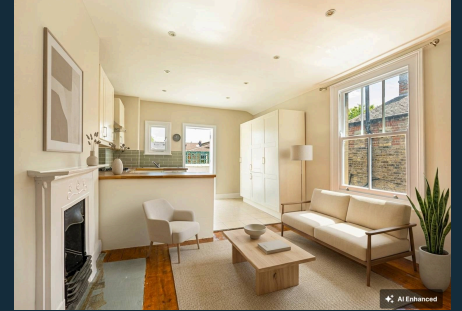


haboodle

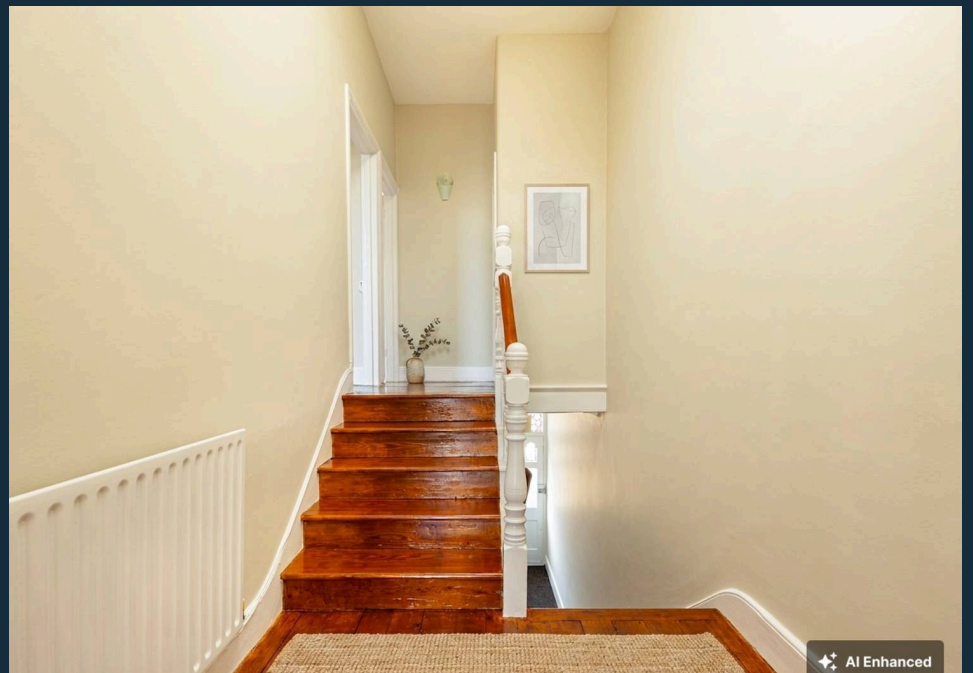
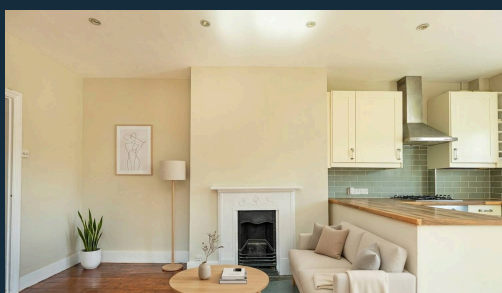
Tucked away on the ever-popular Moring Road, this beautifully presented first-floor maisonette offers the perfect blend of character, space and future potential, all within easy reach of everything that makes Tooting Bec such a sought-after place to call home.

Step inside and you're welcomed by a generous hallway that leads through to a bright and sociable open-plan kitchen, dining and living space. Whether you're hosting friends, enjoying family dinners, or simply unwinding at the end of the day, this room is designed to bring people together. From here, doors open onto a private roof terrace – a fantastic extension of the living space and the perfect spot for a morning coffee, summer BBQ or evening drink.

The home offers two spacious double bedrooms filled with natural light, alongside a versatile third bedroom that works equally well as a nursery, guest room or home office. Throughout the property, the original wooden floors have been lovingly restored, adding warmth and character, while

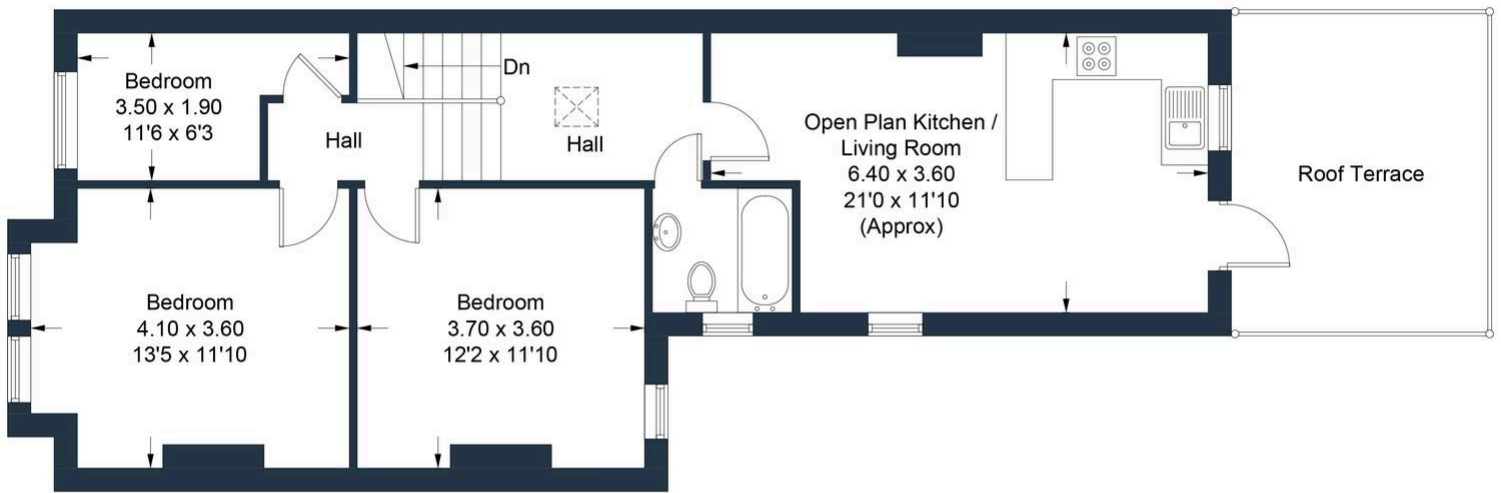


- Three Bedroom First Floor Masionette
- Recently Redecorated Throughout
- Private Roof Terrace
- No Chain
- Loft Conversion Potential (STPP)
- Moments From Tooting Bec Station
- Moments From Tooting Bec Common
- Vibrant Cafés, Restaurants & Bars Nearby



Moring Road, Tooting Bec, SW17

Approximate Gross Internal Area = 73.85 sq m / 795 sq ft



First Floor



Ground Floor

Illustration for identification purposes only, measurements are approximate, not to scale. Produced by Haboodle Estate Agents (ID1315780)



haboodle