

Flat 25, Imperial Court, 225 Streatham Road

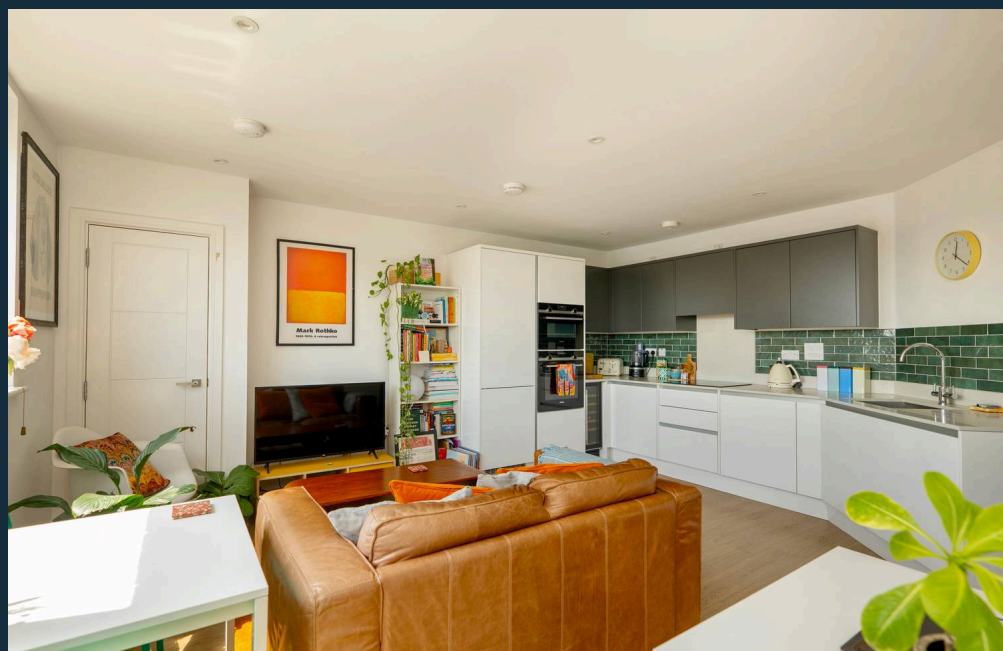
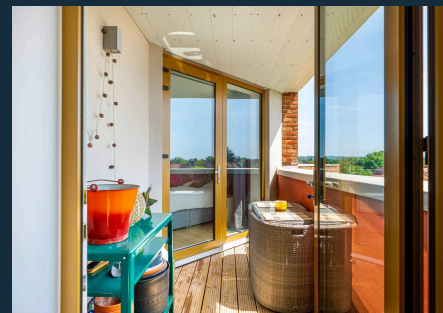
£325,000 Leasehold



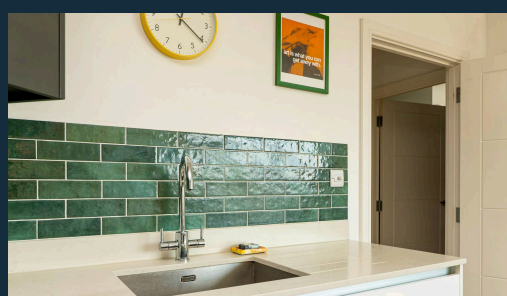
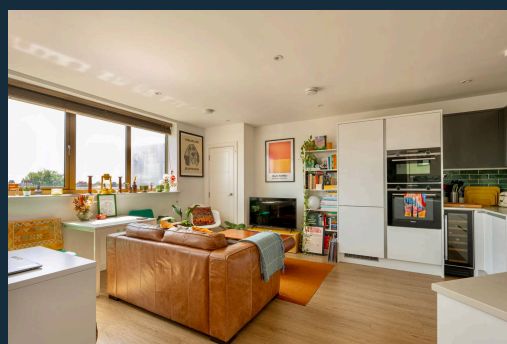
haboodle

This high-spec, immaculate home offers modern living within a thriving South London community. It is a short commute to Central London and provides a wealth of good local shops, cafes, and bars.

On entering this third-floor apartment, the high quality and finish are immediately apparent. The spacious hallway with Karndean flooring provides direct access to the modern open-plan kitchen and lounge, bright double bedroom, and elegant contemporary bathroom. The open-plan lounge and kitchen area is light-filled and benefits from direct access to the private balcony, perfect for enjoying the afternoon sunshine and evening sunsets. The contemporary kitchen units are complemented by stone worktops, adding a touch of luxury to this fully equipped kitchen, which features an integrated fridge-freezer, built-in wine cooler, full-size integrated dishwasher, and a Siemens oven plus a micro/convection oven. Tastefully decorated throughout with neutral, vibrant colours, this living area provides an excellent space to entertain and unwind. The bright double bedroom offers direct access to the balcony, and features

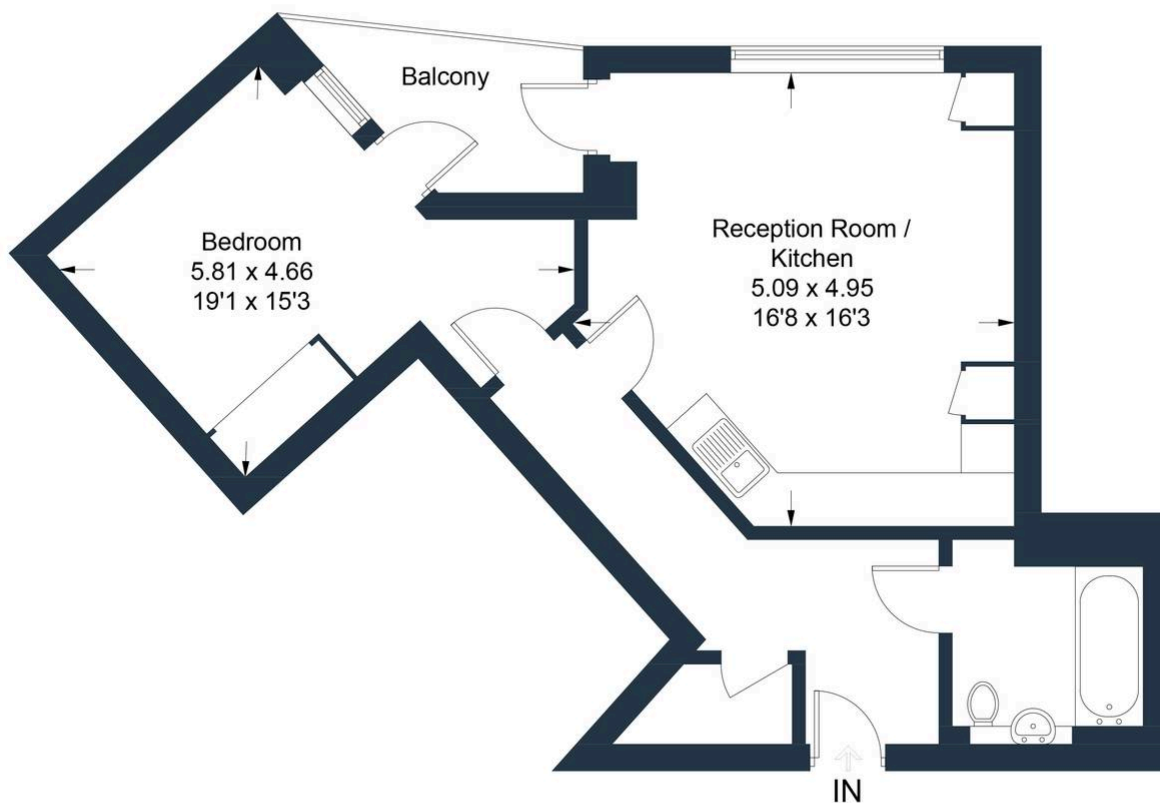


- › Modern Fitted Kitchen & Integrated Appliances
- › Gas Central Heating
- › Private Balcony
- › Large Communal Garden
- › Long Leasehold
- › Superb Transport Links
- › Fantastic Local Amenities
- › Top Floor With Lovely Views
- › Secure Entry System And Lift
- › Secure Bike Storage



Imperial Court, Streatham Mitcham, CR4

Approximate Gross Internal Area = 50.2 sq m / 540 sq ft



Second Floor

Illustration for identification purposes only, measurements are approximate, not to scale. Produced by Haboodle Estate Agents (ID1314253)



haboodle