



23b Hopton Road, London  
£400,000 OIEO Share of Freehold



haboodle

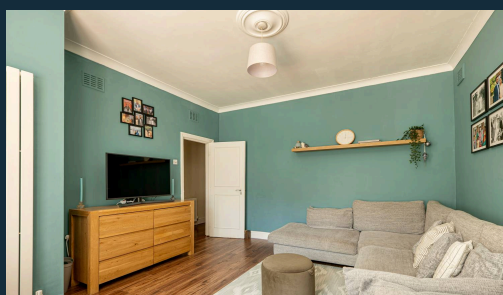
Situated on the sought-after Hopton Road, this beautifully presented two-bedroom Victorian garden flat offers a wonderful blend of character, practicality and modern living, all within easy reach of Streatham's vibrant High Road and excellent transport links.

Accessed via its own private entrance, the property welcomes you into a spacious hallway before leading through to a bright and generous reception room. The large bay window floods the space with natural light, creating the perfect setting for both relaxing and entertaining. Two well-proportioned double bedrooms provide flexible accommodation, each benefitting from fitted storage, whilst the modern kitchen offers ample cupboard space and direct access to the communal garden.

A real standout feature of this home is its exclusive direct access to the beautifully maintained communal garden – a rare benefit for a flat and an ideal space for enjoying morning coffee, summer dining or simply unwinding outdoors.



- › Two Double Bedrooms
- › Private Front Entrance
- › Share Of Freehold
- › Spacious Bay-Fronted Reception Room
- › Direct Access To Communal Garden
- › Excellent Built-In Storage
- › Moments From Streatham Station
- › Close To Streatham Common And High Road



## Hopton Road, Streatham - SW16

Approximate Gross Internal Area = 69.9 sq m / 752 sq ft

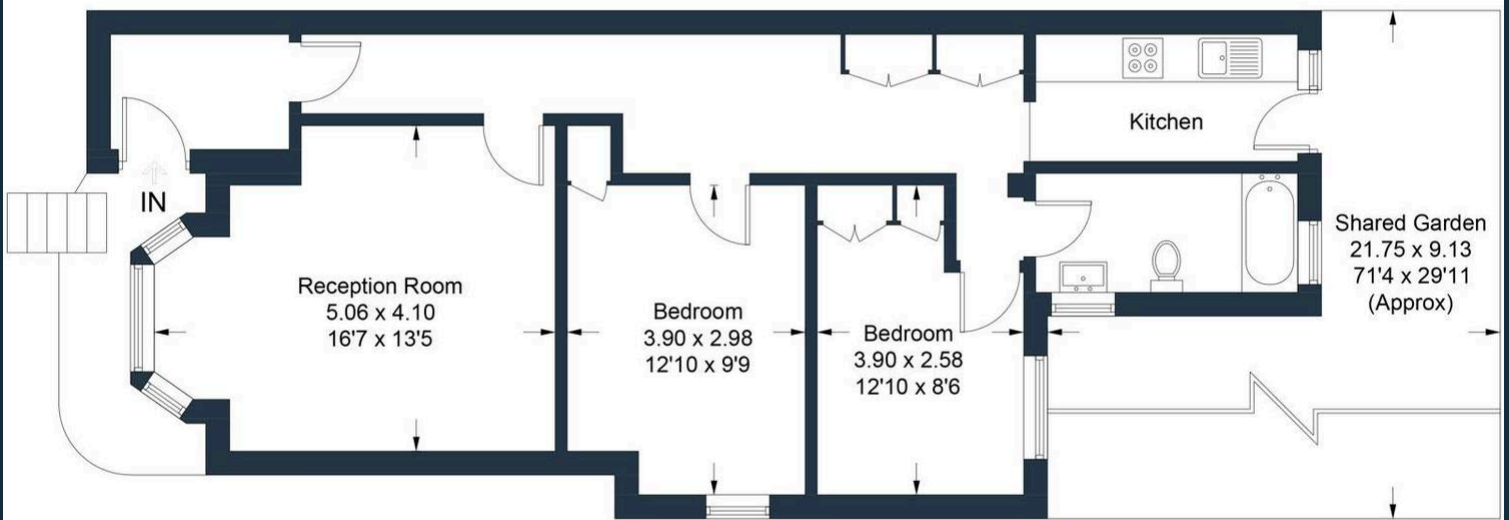


Illustration for identification purposes only, measurements are approximate, not to scale. Produced by Haboodle Estate Agents (ID1315698)

You can include any text here. The text can be modified upon generating your brochure.



**haboodle**



You can include any text here. The text can be modified upon generating your brochure.

