

Colhugh Chine Colhugh Street, Llantwit Major  
£599,950



## Colhugh Chine Colhugh Street

Llantwit Major, Llantwit Major

UNIQUE OPPORTUNITY. In one of the most sought after locations in the Vale of Glamorgan lies this detached dormer bungalow in need of modernising, with...

- DETACHED DORMER BUNGALOW.
- 4 BEDS. 2 RECEPTIONS.
- STUNNING MATURE GARDENS.
- IN NEED OF MODERNISING.
- SUPERB LOCATION. DRIVEWAY.
- POTENTIAL TO EXTEND.





## GROUND FLOOR

### Entrance Porch

Front entrance door. Opaque glazed door to entrance hallway.

### Entrance Hallway

Stairs to first floor. Door to bedroom 1, sitting room, cloakroom/wc, kitchen and dining room. Original wood floor boards.

### Bedroom 1

Dimensions: 8' 8" x 11' 6" (2.64m x 3.50m). Window to front. Radiator.

### Sitting Room

Dimensions: 12' 0" x 25' 4" (3.65m x 7.72m). Windows to rear. Fireplace. Radiators. Original wood floor boards.

### Cloakroom/WC

Dimensions: 3' 0" x 5' 6" (0.91m x 1.68m). Window to front. Vertical radiator. Low level WC. Pedestal wash hand basin with mixer tap. Ceramic wall tiles.

### Dining Room

Dimensions: 12' 2" x 19' 9" (3.71m x 6.02m). Windows to rear and side. Radiators. Log burner with marble hearth.

### Kitchen

Dimensions: 7' 8" x 13' 10" (2.34m x 4.21m). Windows to front and side. Radiator. Fitted kitchen. Stainless steel sink. Opening to porch.

### Porch

Glazed door to front. Window to rear.

## FIRST FLOOR

### Landing

Windows to front. Doors to bedrooms and family bathroom. Cupboard.

### Bedroom 2

Dimensions: 11' 3" x 13' 1" (3.43m x 3.98m). Window to





## GROUND FLOOR

### Entrance Porch

Front entrance door. Opaque glazed door to entrance hallway.

### Entrance Hallway

Stairs to first floor. Door to bedroom 1, sitting room, cloakroom/wc, kitchen and dining room. Original wood floor boards.

### Bedroom 1

Dimensions: 8' 8" x 11' 6" (2.64m x 3.50m). Window to front. Radiator.

### Sitting Room

Dimensions: 12' 0" x 25' 4" (3.65m x 7.72m). Windows to rear. Fireplace. Radiators. Original wood floor boards.

### Cloakroom/WC

Dimensions: 3' 0" x 5' 6" (0.91m x 1.68m). Window to front. Vertical radiator. Low level WC. Pedestal wash hand basin with mixer tap. Ceramic wall tiles.

### Dining Room

Dimensions: 12' 2" x 19' 9" (3.71m x 6.02m). Windows to rear and side. Radiators. Log burner with marble hearth.

### Kitchen

Dimensions: 7' 8" x 13' 10" (2.34m x 4.21m). Windows to front and side. Radiator. Fitted kitchen. Stainless steel sink. Opening to porch.

### Porch

Glazed door to front. Window to rear.

## FIRST FLOOR

### Landing

Windows to front. Doors to bedrooms and family bathroom. Cupboard.

### Bedroom 2

Dimensions: 11' 3" x 13' 1" (3.43m x 3.98m). Window to

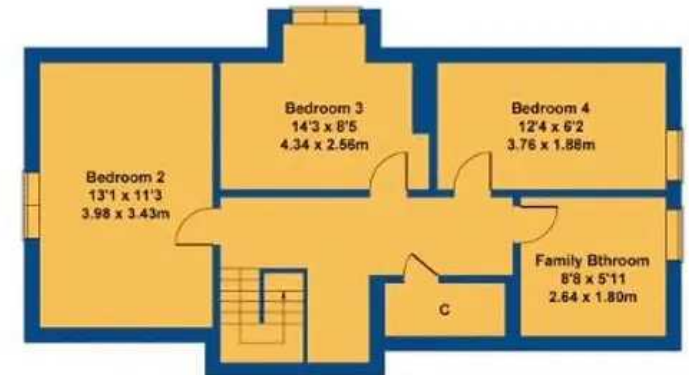
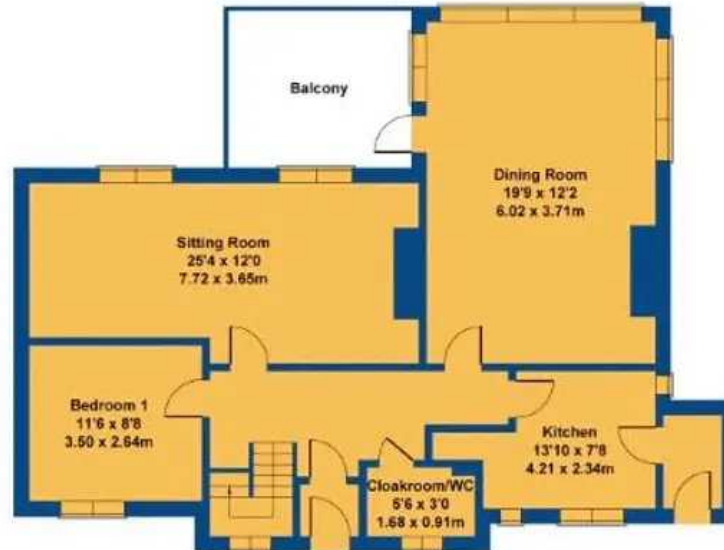
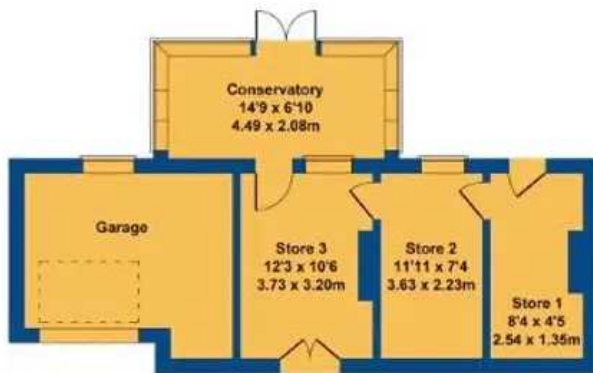






# Colhugh Chine

Approximate Gross Internal Area  
2443 sq ft - 227 sq m



Not to Scale. Produced by The Plan Portal 2023  
For Illustrative Purposes Only.



## Chris Davies Estate Agents

Chris Davies Estate Agent, Heritage House East Street - CF61 1XY

01446 792020 • [llantwitmajor@chris-davies.co.uk](mailto:llantwitmajor@chris-davies.co.uk) • [www.chris-davies.co.uk/](http://www.chris-davies.co.uk/)

HELPFUL INFORMATION whilst we try to ensure our sales particulars are complete, accurate and reliable, if there is any point which is particularly important, please ask and we will be happy to check it, including specific information in respect of commuting links, surroundings, noise, views, or condition. For security purposes, applicants who wish to view will need to provide their name, address and telephone number. All measurements are approximate to the widest and

You can include any text here. The text can be modified upon generating your brochure.

You can include any text here. The text can be modified upon generating your brochure.