



16 Buckfast Road, Sale

Sale

Guide Price £589,950

**GASCOIGNE
HALMAN**

THE AREA'S LEADING ESTATE AGENCY



16 Buckfast Road

Sale

Located on the doorstep of Ashton-on-Mersey village, a stylishly enhanced and spacious four bedroom detached family home, with refitted kitchen and bathroom, and beautiful landscaped gardens, being in catchment of Trafford's popular schools, Sale and key transport links.

Council Tax band: E

Tenure: Freehold

EPC Energy Efficiency Rating: D

EPC Environmental Impact Rating: E

- An Stylishly Enhanced And Spacious Detached Family Home
- Superbly Location Only A Short Stroll To Ashton-on-Mersey Village
- Large Living/ Dining Room, Versatile Second Reception Room and Pleasant Conservatory
- Immaculately Designed And Stylish Contemporary Refitted Kitchen
- With Four Well Sized Bedrooms
- Modern Refitted Bathroom & Ground Floor W/C
- Within Catchment of Popular Primary And Secondary Schools, & Close To Sale And Key Transport Links
- Beautiful Enveloping Landscaped Garden With Useful Detached Garage



16 Buckfast Road

Sale

Nestled within a sought-after residential setting on the doorstep of the idyllic Ashton-on-Mersey village, close to Sale, this impressively enhanced four-bedroom detached house offers an exceptional blend of spacious living, contemporary design, and versatile accommodation, set within a well sized landscaped plot, and being within catchment of Trafford's finest schools and close to key transport links, making it an ideal choice for families and discerning buyers alike.

Upon entering the welcoming hallway, you are greeted by a sense of light and openness, with quality flooring and modern finishes setting the tone throughout. ahead of the hall is a large living/ dining room offering a dual aspect, and opening to a charming versatile conservatory. A second reception room offers a versatile space ideal as a snug, second sitting room, play room or home office, whilst the heart of the home is the stylish refitted separate kitchen, thoughtfully designed with sleek cabinetry, integrated appliances and dining table, and ample workspace. There is also a separate ground floor w/c.



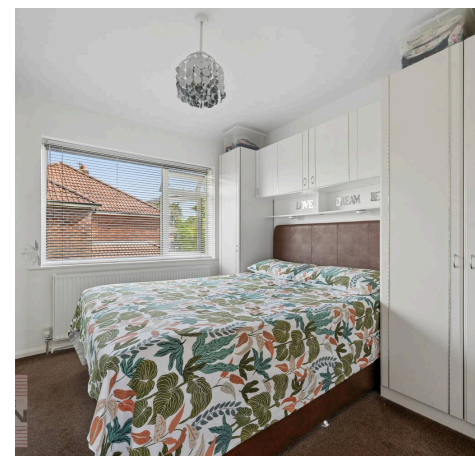
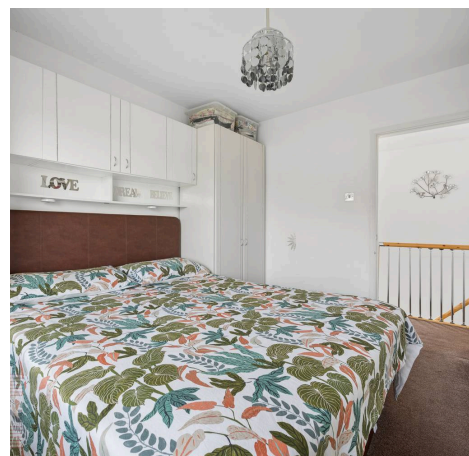
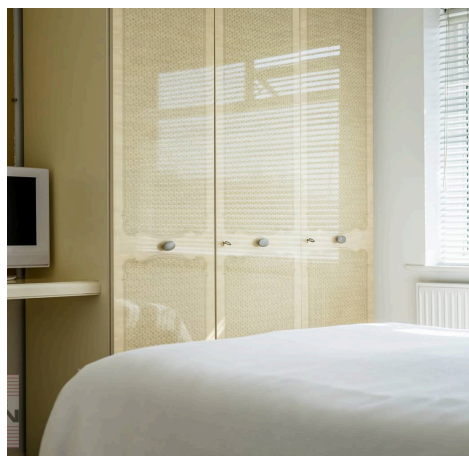


16 Buckfast Road

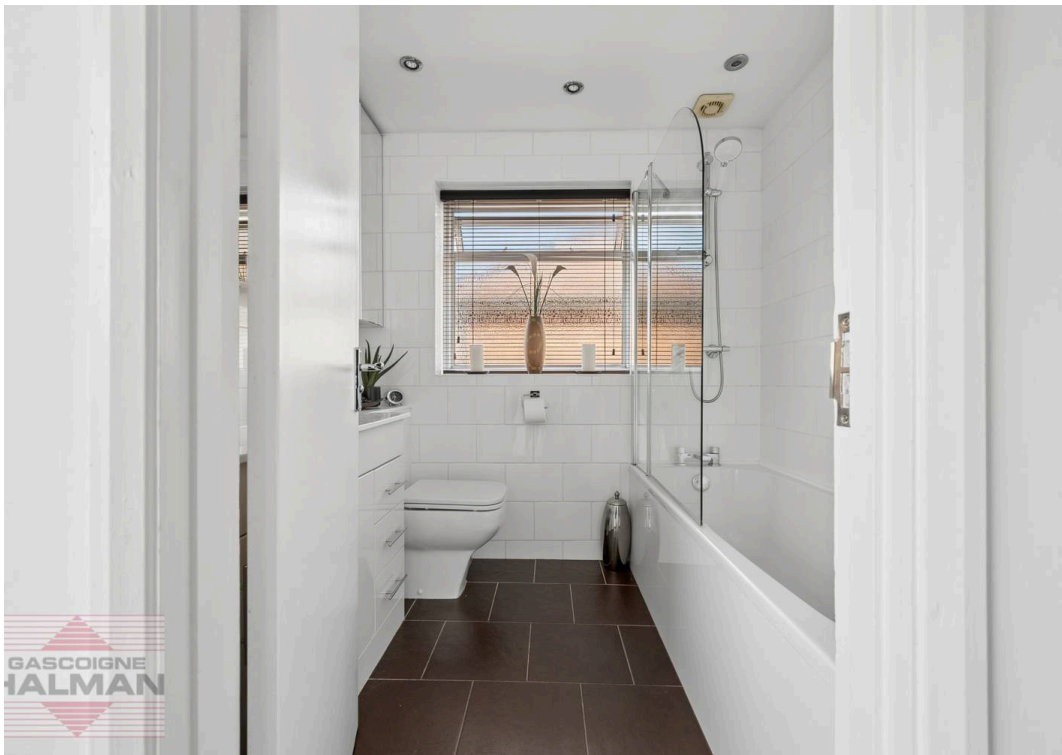
Sale

Upstairs, the property boasts four well-proportioned bedrooms, each benefitting from fitted wardrobes, and plenty of natural light. There is a stylish family bathroom, featuring a bath with overhead shower and attractive tiling.

Externally the home enjoys a pleasant enveloping landscaped plot, being mature in design and private with hedged and fenced borders, a generous 'L-shaped' rear garden with large stone patio area, whilst to the front and side is a large paved driveway and versatile covered car-port area ideal for storage and leading to the useful detached garage.



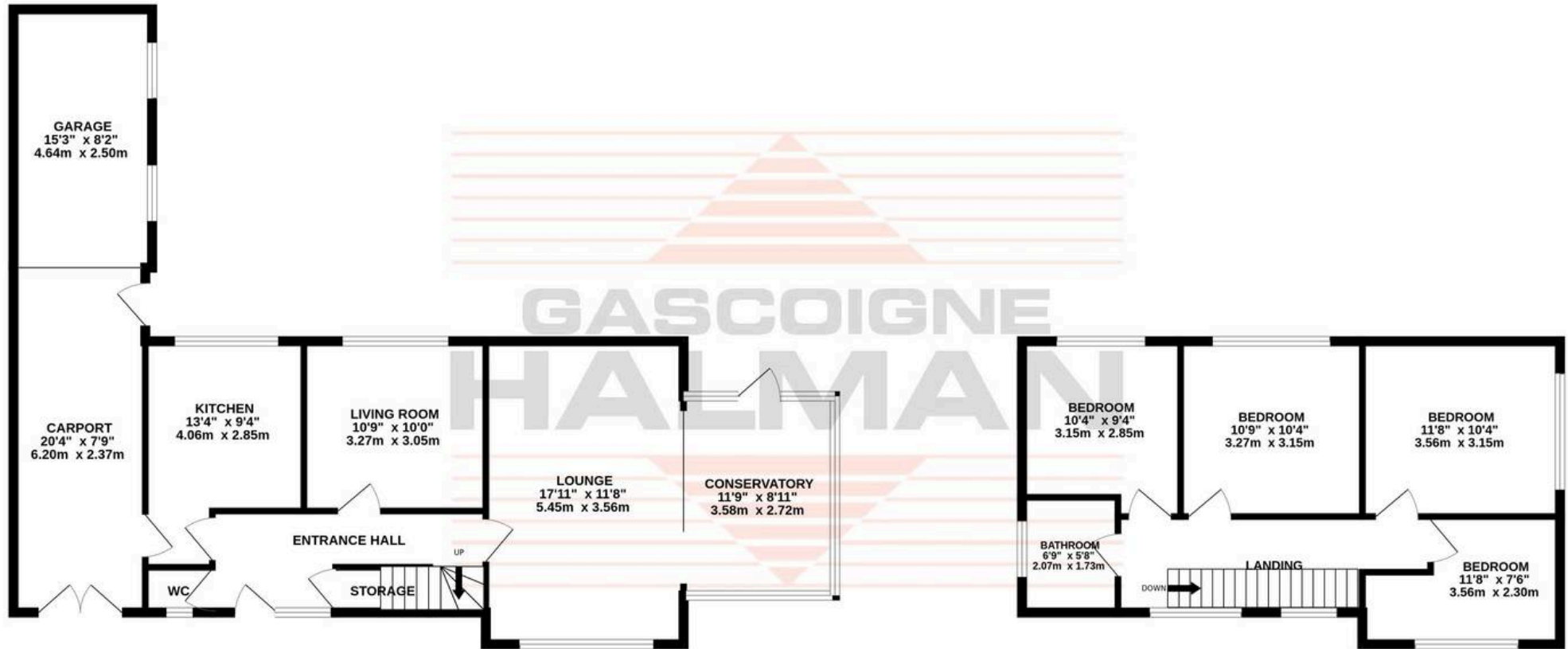






GROUND FLOOR
918 sq.ft. (85.3 sq.m.) approx.

1ST FLOOR
530 sq.ft. (49.3 sq.m.) approx.



TOTAL FLOOR AREA : 1449 sq.ft. (134.6 sq.m.) approx.

Whilst every attempt has been made to ensure the accuracy of the floorplan contained here, measurements of doors, windows, rooms and any other items are approximate and no responsibility is taken for any error, omission or mis-statement. This plan is for illustrative purposes only and should be used as such by any prospective purchaser. The services, systems and appliances shown have not been tested and no guarantee as to their operability or efficiency can be given.

Made with Metropix ©2026



THE AREA'S LEADING ESTATE AGENCY