



Orchard House Fore Street, Constantine

£395,000 Freehold

Spacious stone-detailed 3 double bedroom home with large living areas, low-maintenance gardens, ample parking, no onward chain, in a peaceful village with amenities and countryside walks.

Heather & Lay
The local property experts

Residential Sales 01326 319767
sales@heather-lay.co.uk

3 Church Street, Falmouth, Cornwall, TR11 3DN
www.heather-lay.co.uk





- Detached family home
- Three double bedrooms
- Larger than expected
- Parking for 4-5 cars
- Village location
- Walking distance to the school
- On a bus route
- No onward chain
- Video tour available

THE PROPERTY:

Built in 2002 with attractive stone detailing to the front elevation, this charming home offers significantly more living space than many modern three-bedroom properties. All three bedrooms are generous doubles, while the ground floor provides a spacious sitting room, a well-proportioned kitchen, a separate utility room, and a convenient cloakroom/WC.

Outside, the gardens are designed to be low maintenance, while the front of the property benefits from extensive off-road parking. Subject to the necessary permissions, there may also be potential to reconfigure part of this area to create additional garden space. For further insight, please watch our walk-through, talk-through video tour.

THE LOCATION:

Situated on the edge of this sought-after village, Orchard House is set back from a quiet road that benefits from a regular bus service, offering a peaceful setting with excellent accessibility.

The village itself enjoys a strong sense of community and offers a range of everyday amenities, including two well-stocked shops, a beautiful parish church, a traditional pub, and a highly regarded primary school. The surrounding countryside provides an abundance of scenic footpaths, making it an ideal location for those who enjoy walking and the outdoors.

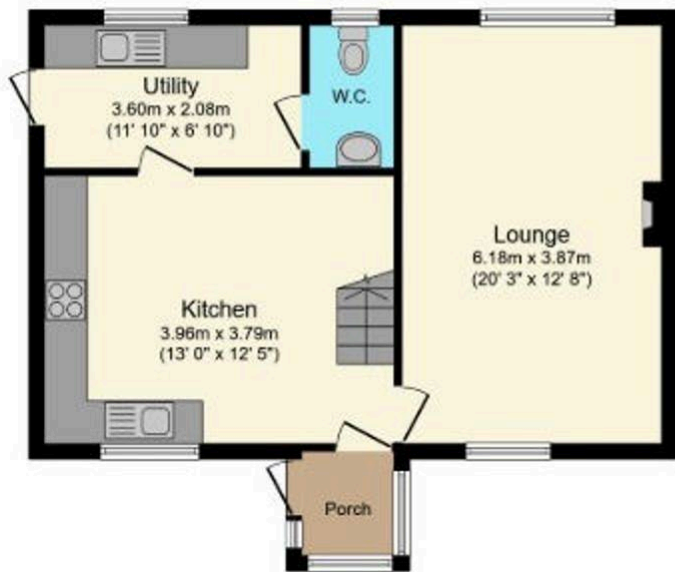
Council Tax band: D

Tenure: Freehold

EPC Energy Efficiency Rating: C

EPC Environmental Impact Rating:





Ground Floor



First Floor



Total floor area 103.2 m² (1,111 sq.ft.) approx

This floor plan is for illustrative purposes only. It is not drawn to scale. Any measurements, floor areas (including any total floor area), openings and orientation are approximate. No details are guaranteed, they cannot be relied upon for any purpose and they do not form part of any agreement. No liability is taken for any error, omission or misstatement. A party must rely upon its own inspection(s). Powered by www.focalagent.com



These particulars are set out as a general outline in accordance with the Property Misdescriptions Act (1991) only for the guidance of intending purchasers or lessees, and do not constitute any part of an offer or contract. Details are given without any responsibility, and any intending purchasers, lessees or third parties should not rely on them as statements or representations of fact, but must satisfy themselves by inspection or otherwise as to the correctness of each of them. We have not carried out a structural survey and the services, appliances and specific fittings have not been tested. All photographs, measurements, floor plans and distances referred to are given as a guide only and should not be relied upon for the purchase of carpets or any other fixtures or fittings. Gardens, roof terraces, balconies and communal gardens as well as tenure and lease details cannot have their accuracy guaranteed for intending purchasers. Lease details, service ground rent (where applicable) are given as a guide only and should be checked and confirmed by your solicitor prior to exchange of contracts.

