




Holdens
ESTATE AGENTS

24 Boardman Close, Farington

Offers Over **£199,950**


Holdens
ESTATE AGENTS



24 Boardman Close

Farington, Leyland

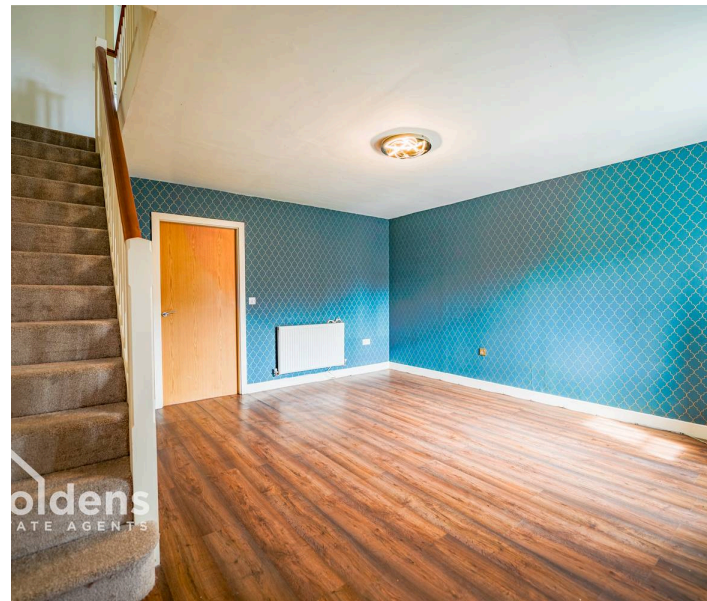
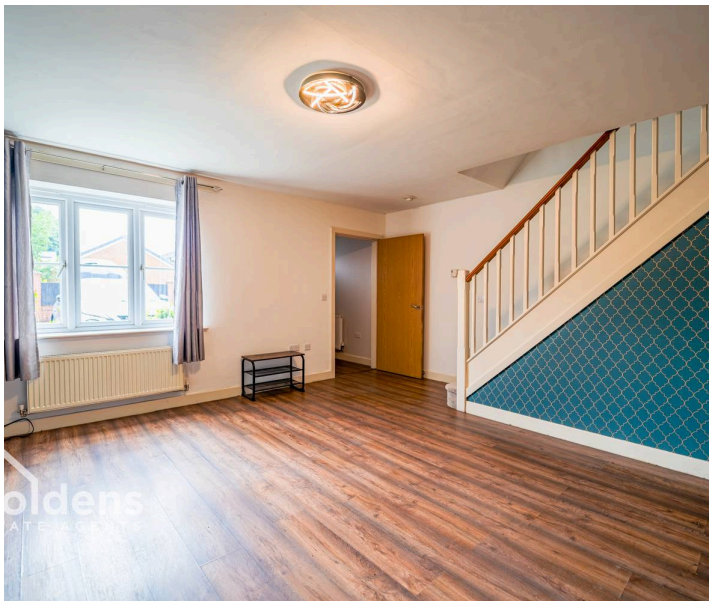
Beautifully presented three-bedroom semi in a quiet Farington cul-de-sac. Modern kitchen, private garden, driveway, great transport links. Ideal for first-time buyers or downsizers. Council Tax band: C

Tenure: Leasehold

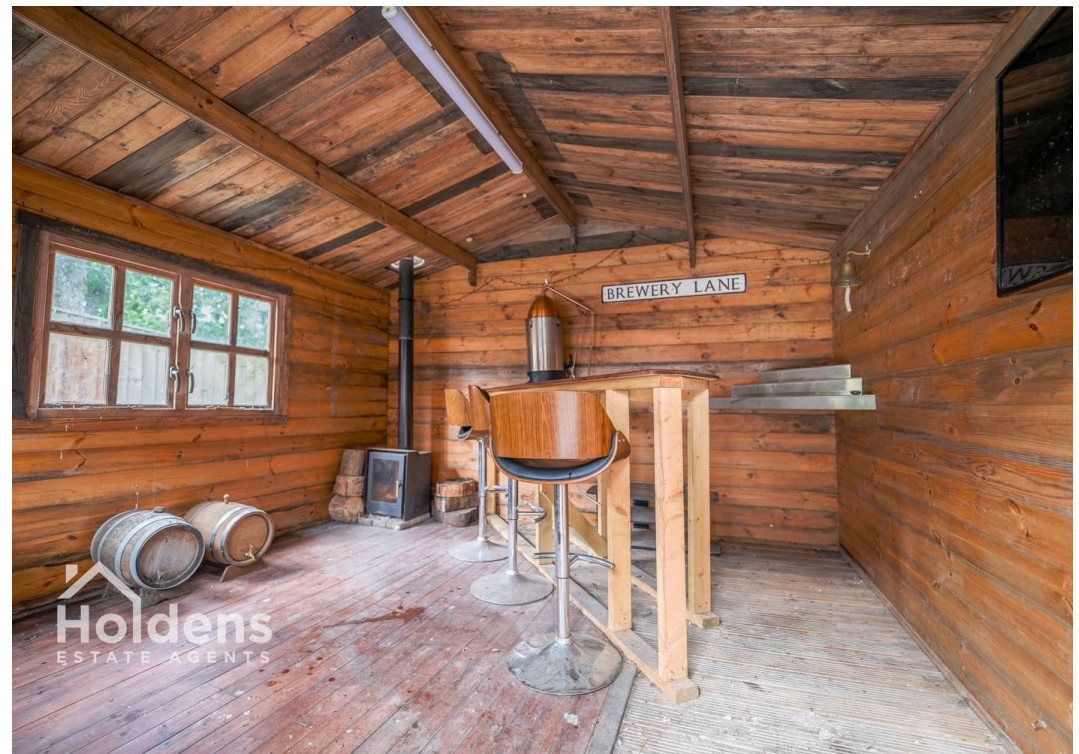
EPC Energy Efficiency Rating:

EPC Environmental Impact Rating:

- Available with no onward chain
- Ideal for first-time buyers, growing families or downsizers
- Modern semi-detached family home
- Spacious kitchen/dining room
- Bright and comfortable living room
- Ground floor WC
- Private rear garden
- Driveway parking
- Near green spaces including Farington Park
- Within easy reach of local schools, supermarkets and everyday amenities









Holdens Lostock Hall

Holdens Estate Agents, 6 Watkin Lane - PR5 5RD

01772 698888

lostockhall@holdens.co.uk

www.holdens.co.uk/

Disclaimer: All information such as plans, dimensions, and details about the property's condition or suitability is provided in good faith and believed to be accurate, but should not be relied upon without independent verification. Buyers or tenants must carry out their own checks. Appliances and systems haven't been tested. It's strongly advised to get professional inspections before making any commitments. No employee or agent of Holdens Estate Agents is authorised to make promises or guarantees about the property. These details are for general guidance only and do not form part of any contract. All discussions with Holdens Estate Agents are subject to contract.