



29 Beechwood Tabley Road, Knutsford

Knutsford

£90,000

**GASCOIGNE
HALMAN**

THE AREA'S LEADING ESTATE AGENCY



29 Beechwood Tabley Road

Knutsford

A bright and well-presented second-floor apartment situated within the ever-popular Beechwood retirement development, offered for sale with no onward chain and within a short, level walk of Knutsford town centre.

Council Tax band: B

Tenure: Leasehold

EPC Energy Efficiency Rating: D

EPC Environmental Impact Rating: D

- Second-floor retirement apartment
- Views over the Heath
- No onward chain
- Tasteful kitchen with appliances and window
- Lift access and excellent communal facilities
- Short, level walk to Knutsford town centre



29 Beechwood Tabley Road

Knutsford

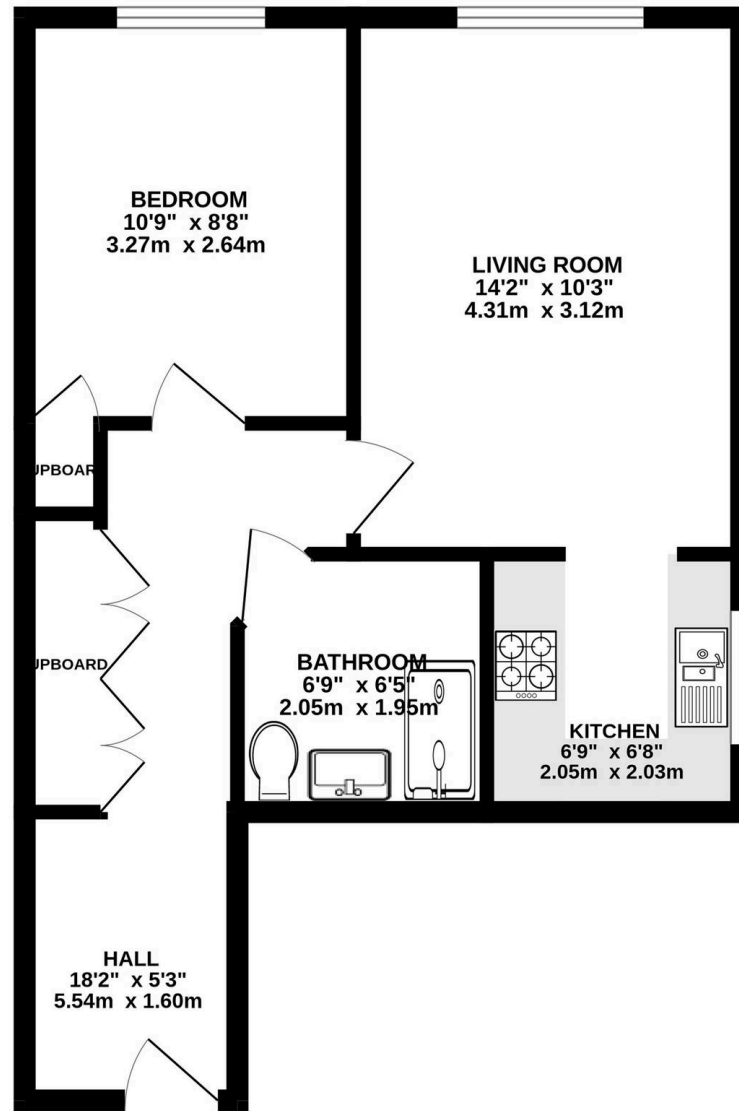
The apartment is located on the sought-after 'Heath Side' of the development and is accessed via a serviced lift. Accommodation comprises an entrance hall with fitted storage cupboards, a good-sized double bedroom and a bathroom with a recently fitted walk-in shower. There is a spacious living room enjoying views over the Heath, alongside a updated kitchen which unusually benefits from an external window providing excellent natural light.

Residents enjoy access to a range of communal facilities including a residents' lounge, laundry room, en-suite guest accommodation and well-maintained landscaped gardens.

Knutsford is an old market town rich in heritage and brimming with a variety of architectural features, particularly those built in an Italianate Tuscan style by the famous local architect, Richard Harding Watt. Linked by a web of ginnels, cobbles and courtyards, the two main streets are home to a variety of shops ranging from boutiques to large outlets including Waitrose, Boots, Boots and Aldi. Evenings in Knutsford are lively with wine bars, pubs and restaurants catering for most tastes. Knutsford borders some of Cheshires most beautiful countryside and has the famous Tatton Park Country Estate on its doorstep. There is a Leisure Centre, private sports clubs and notable golf courses close by. Excellent education facilities cater for children in both the state and private sectors. The rail station lies on the Chester to Manchester line and Manchester Airport along with nearby connections to the M6 and M56 makes commuting easy.



GROUND FLOOR
454 sq.ft. (42.2 sq.m.) approx.



TOTAL FLOOR AREA : 454 sq.ft. (42.2 sq.m.) approx.
Measurements are approximate. Not to scale. Illustrative purposes only
Made with Metropix ©2025

You can include any text here. The text can be modified upon generating your brochure.



THE AREA'S LEADING ESTATE AGENCY