



Bridge Meadow, Lymm

Lymm

£250,000

**GASCOIGNE
HALMAN**

THE AREA'S LEADING ESTATE AGENCY

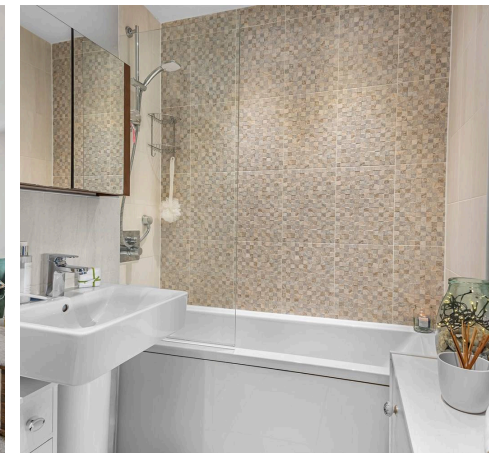
Bridge Meadow

Lymm

Gascoigne Halman are pleased to present to market a stylish first-floor apartment located in the sought-after road of Bridge Meadow located in the beautiful Cheshire village of Lymm. Conveniently located within close proximity from Lymm village amenities, this apartment offers a perfect blend of peaceful surroundings with easy access to local shops and restaurants. This well-presented leasehold property offers a contemporary living space briefly comprising of two double bedrooms, family bathroom, and a spacious open-plan kitchen diner/living room. The master bedroom comes with an en-suite for added convenience.

Situated in a quiet location, residents can enjoy the well maintained lawned communal garden and the apartment also benefits from an allocated parking space for a single car. Don't miss the opportunity to own this sleek and elegant apartment. Contact us today to arrange a viewing and make this stylish apartment your new home.

- Open plan kitchen diner
- First floor apartment
- Master en-suite
- Lawned communal gardens
- Two double bedrooms
- Lymm village amenities



3 Bridge Meadow

Lymm

Stylish two bedroom apartment with En-suite, open plan Kitchen/ living room, with communal gardens!

Council Tax band: C

Tenure: Leasehold

EPC Energy Efficiency Rating: B



Approximate Gross Internal Floor Area = 62.9 sq m / 677 sq ft

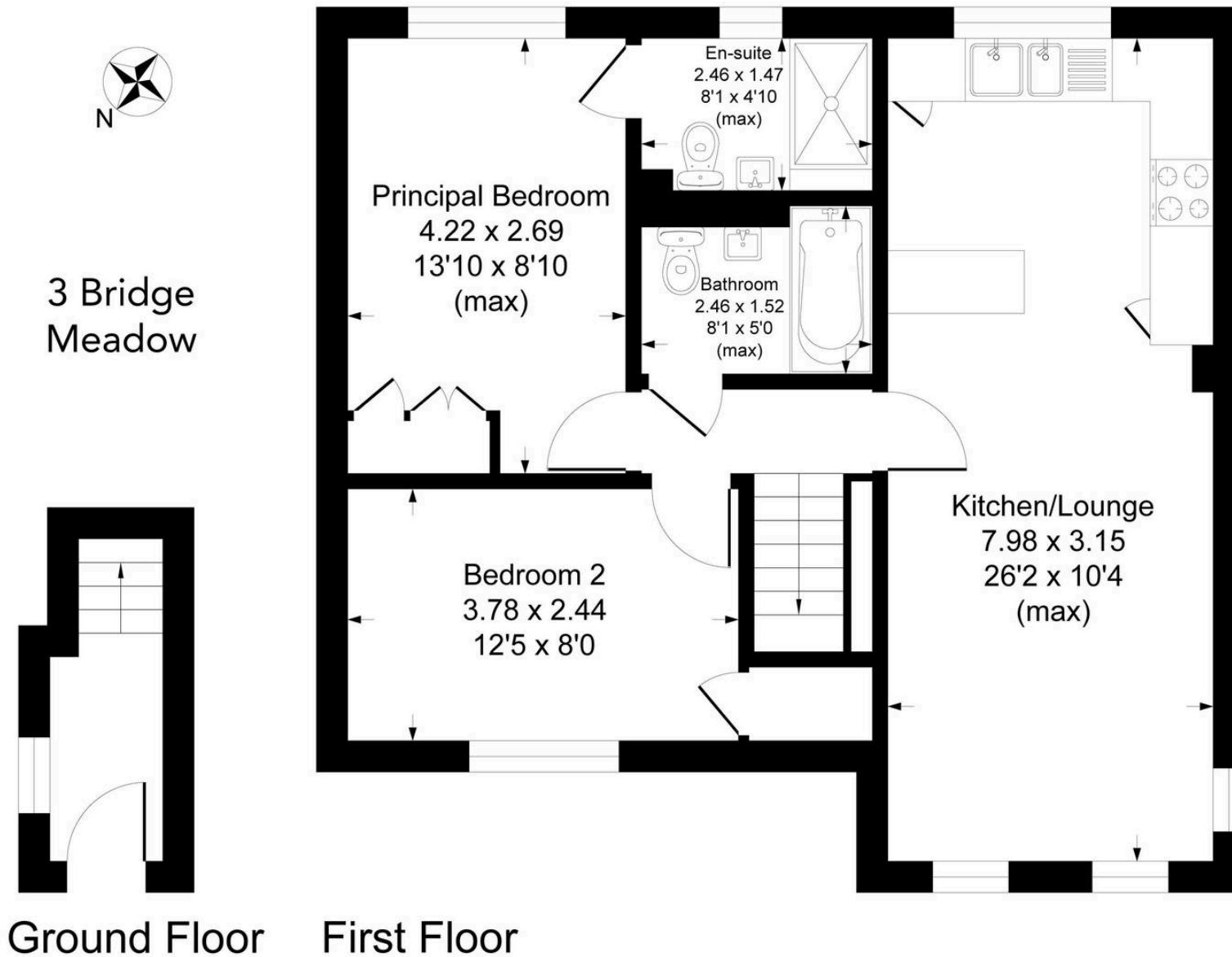


Illustration for identification purposes only, measurements are approximate, not to scale.