



Dock Street, Wapping E1
London

£2,000 pcm



Dock Street, Wapping E1

Conveniently located and immaculately presented one bedroom apartment, close to Tower Hill station, St Katharine Docks and iconic London landmarks such as the Tower of London and Tower Bridge.

- Immaculate One Bedroom Apartment
- Secure Modern Development
- High Specification Finish
- First Floor
- Convenient Zone 1 Location
- Close to St Katharine Docks
- Furnished
- Available Now!





Conveniently located and immaculately presented one bedroom apartment, close to Tower Hill station, St Katharine Docks and iconic London landmarks such as the Tower of London and Tower Bridge.

Set within a secure modern development, this first floor property comprises of an open-plan living space / fitted kitchen, a double bedroom with fitted wardrobes and a contemporary bathroom. Floor-to-ceiling windows allow an abundance of light into this high-specification and comfortable space, which is perfectly suited to a city professional.

Offered furnished and available now!

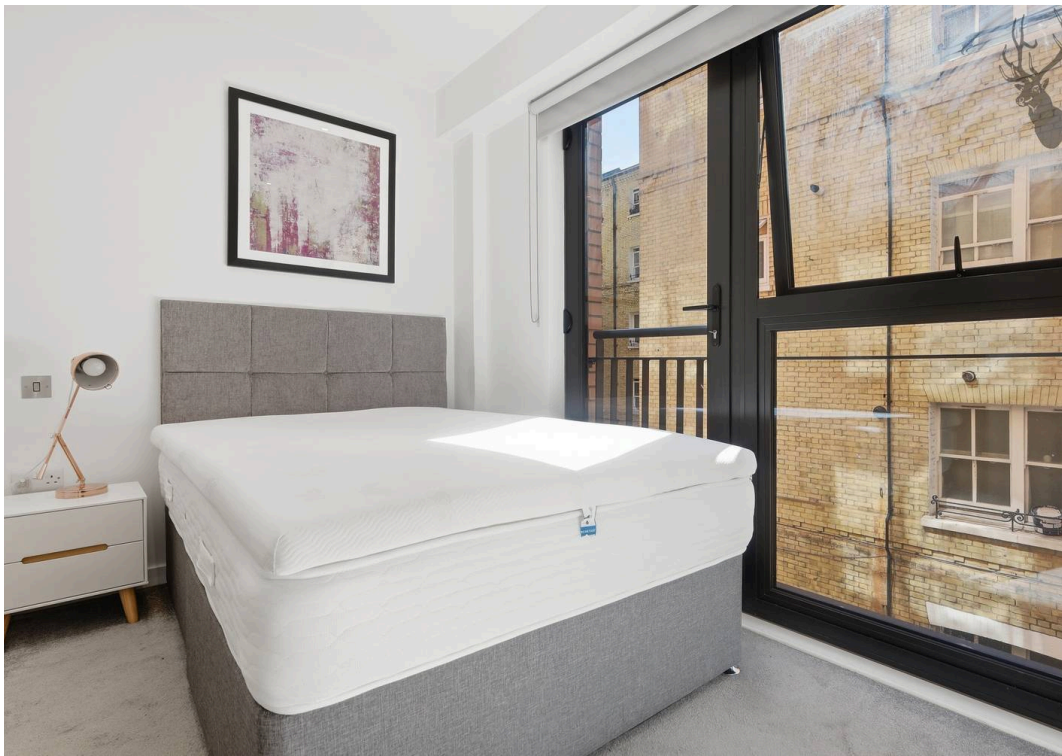
Council Tax band: E

Tenure: Leasehold

EPC Energy Efficiency Rating: B

EPC Environmental Impact Rating: B





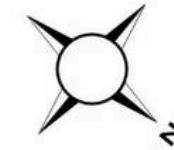


Dock Street (101)

Approx. Gross Internal Area 33.2 sq. metres (357.4 sq. feet)

First Floor

Approx. 33.2 sq. metres (357.4 sq. feet)



FROM EAST LONDON ENERGY TO WEST ESSEX EASE

We Make Moving Home Easy.

At Butler and Stag, we do more than just connect London to West Essex – we make the move seamless. With offices spanning from vibrant East London to the tranquillity of West Essex, we understand the nuances of each area and the journey people take between them. Our marketing goes beyond standard listings, showcasing every property with precision, creativity, and reach that others simply can't match. Coupled with an unparalleled attention to detail, from first enquiry to final move-in, we ensure every client and customer feels informed, supported, and confident. Simply put, we do the little things that make a big difference, setting us apart in every step of the property experience.



LONDON STRATFORD SOUTH WOODFORD BUCKHURST HILL LOUGHTON EPPING BEYOND

Like what you see? Let's talk

Book your **FREE** valuation now



020 8102 1236

london@butlerandstag.com

508 Roman Road, Bow, London, E3 5LU

butlerandstag.uk

IMPORTANT NOTICE - These particulars have been prepared in good faith and they are not intended to constitute part of an offer or contract. We have not performed a structural survey on this property and the services, appliances and specific fittings have not been tested. All photographs, measurements, floor plans and distances referred to are given as a guide and should not be relied upon.

BUTLER & STAG

