

Cassia Point, Stratford, E20  
London

Fixed Price £475,000



## Cassia Point, Stratford, E20

London

A beautifully presented one-bedroom apartment set within the sought-after Glasshouse Gardens development, offering approximately 538 Sq/Ft of bright and well-designed living space.

- Internal Living Space 538 Sq/Ft
- Spacious Open-Plan Living/kitchen Area
- Private Balcony
- Generous Double Bedroom With Fitted Wardrobes
- Modern Fitted Kitchen With Integrated Appliances
- Stylish Family Bathroom
- Excellent Built-In Storage
- Moments From Westfield, Stratford City & Queen Elizabeth Olympic Park
- Ideal For First-Time Buyers And Professionals
- Short Walk To Stratford Station (Elizabeth, Central, Jubilee, DLR, Overground & National Rail).



A beautifully presented one-bedroom apartment set within the sought-after Glasshouse Gardens development, offering approximately 538 Sq/Ft of bright and well-designed living space.

The property features a spacious open-plan living, dining and kitchen area with direct access to a private balcony, creating an ideal space for both relaxing and entertaining. The generous double bedroom benefits from fitted wardrobes, while the contemporary bathroom is finished to a high standard. Further benefits include excellent built-in storage, a modern fitted kitchen with integrated appliances, and floor-to-ceiling windows that maximise natural light.

Residents of Glasshouse Gardens enjoy access to a 24-hour concierge, a fully equipped residents' gym and beautifully maintained communal gardens.

Perfectly positioned in the heart of Stratford, the apartment is just a short walk from Stratford Station, offering exceptional connections via the Elizabeth, Central and Jubilee lines, DLR, London Overground and National Rail services. Westfield Stratford City, Queen Elizabeth Olympic Park and an excellent selection of cafés, restaurants and leisure facilities are all on the doorstep.

An ideal first-time purchase, London home or investment opportunity in one of East London's most vibrant neighbourhoods.

Council Tax band: C

Tenure: Leasehold

EPC Energy Efficiency Rating: B

EPC Environmental Impact Rating: A







A beautifully presented one-bedroom apartment set within the sought-after Glasshouse Gardens development, offering approximately 538 Sq/Ft of bright and well-designed living space.

The property features a spacious open-plan living, dining and kitchen area with direct access to a private balcony, creating an ideal space for both relaxing and entertaining. The generous double bedroom benefits from fitted wardrobes, while the contemporary bathroom is finished to a high standard. Further benefits include excellent built-in storage, a modern fitted kitchen with integrated appliances, and floor-to-ceiling windows that maximise natural light.

Residents of Glasshouse Gardens enjoy access to a 24-hour concierge, a fully equipped residents' gym and beautifully maintained communal gardens.

Perfectly positioned in the heart of Stratford, the apartment is just a short walk from Stratford Station, offering exceptional connections via the Elizabeth, Central and Jubilee lines, DLR, London Overground and National Rail services. Westfield Stratford City, Queen Elizabeth Olympic Park and an excellent selection of cafés, restaurants and leisure facilities are all on the doorstep.

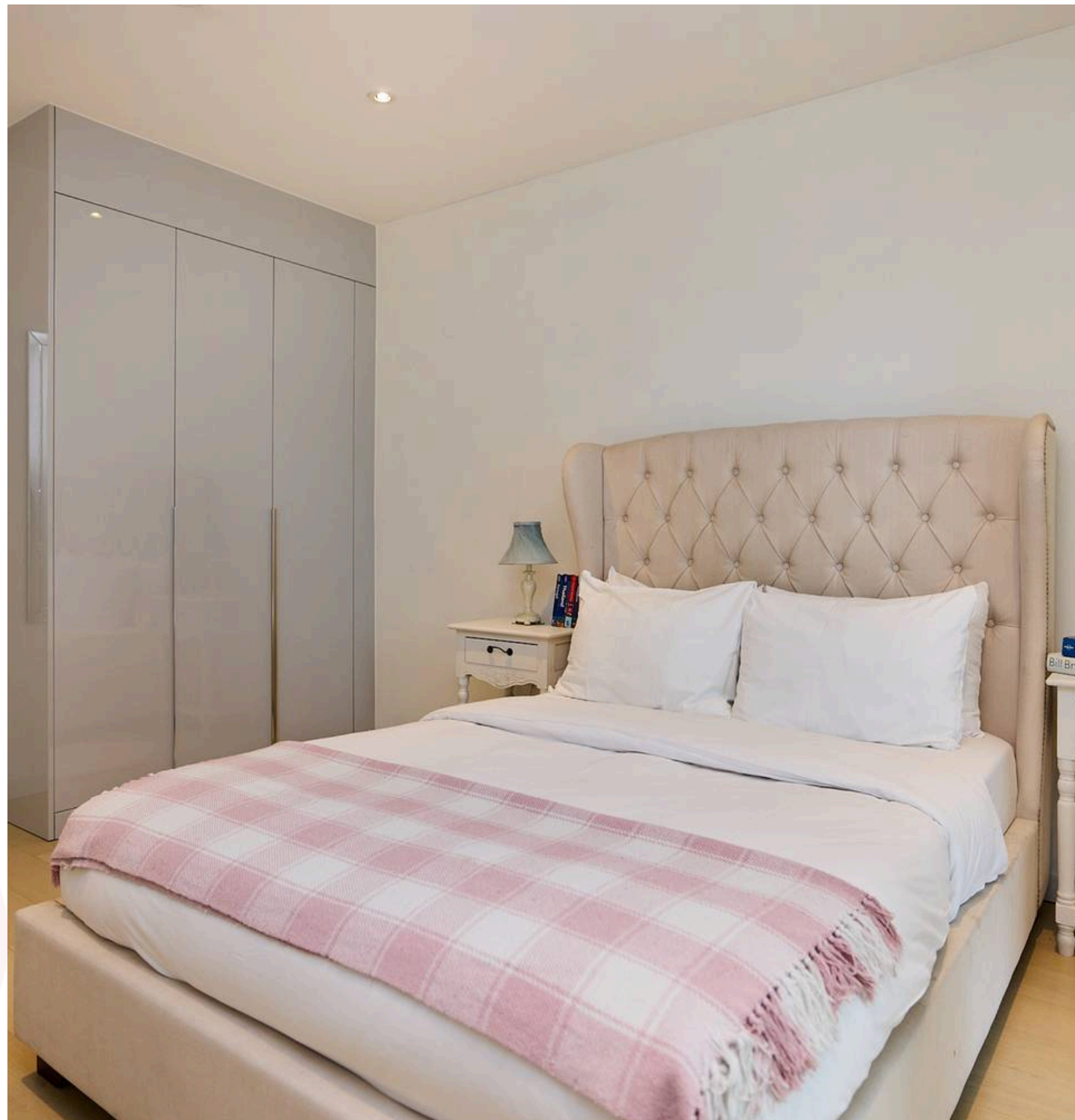
An ideal first-time purchase, London home or investment opportunity in one of East London's most vibrant neighbourhoods.

Council Tax band: C

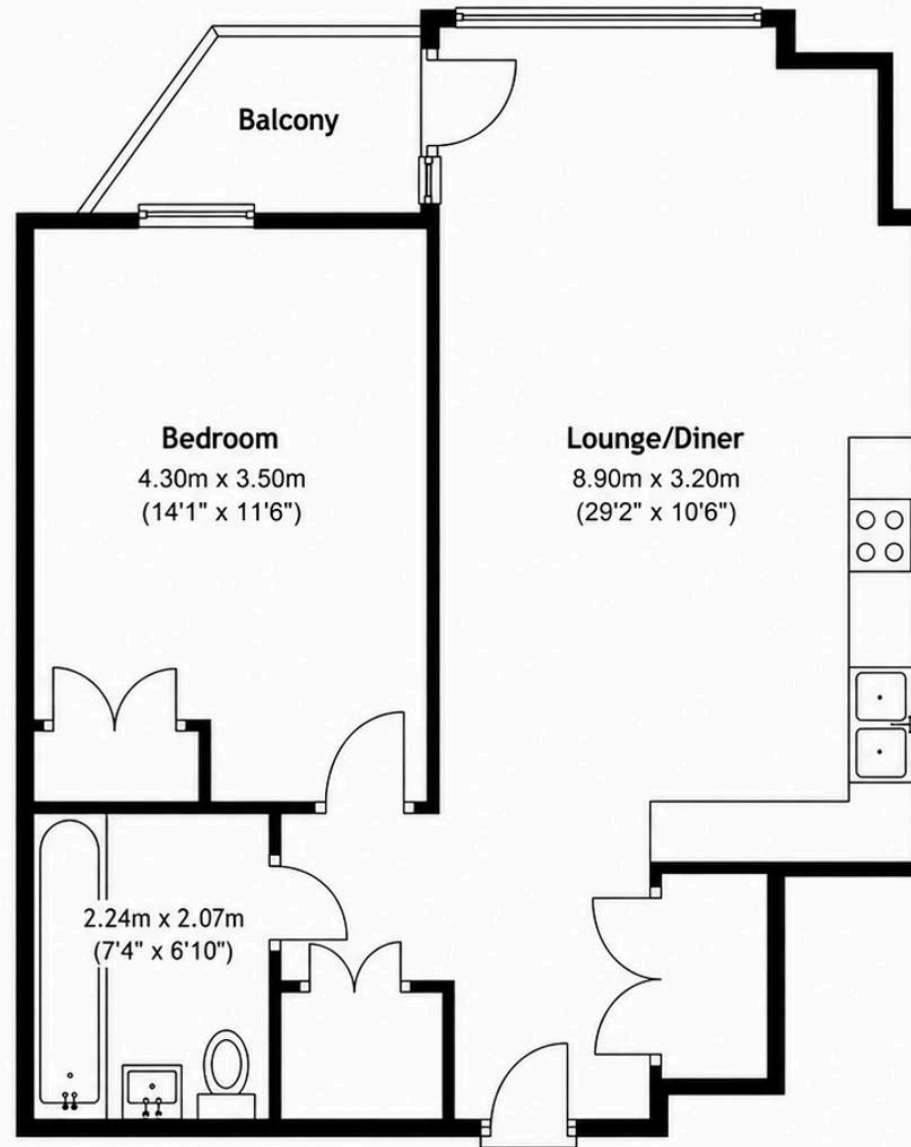
Tenure: Leasehold

EPC Energy Efficiency Rating: B

EPC Environmental Impact Rating: A



# Cassia Point



**Approximate Total Area = 50 sqm / 538 sqft**

# FROM EAST LONDON ENERGY TO WEST ESSEX EASE

## We Make Moving Home Easy.

At Butler and Stag, we do more than just connect London to West Essex – we make the move seamless. With offices spanning from vibrant East London to the tranquillity of West Essex, we understand the nuances of each area and the journey people take between them. Our marketing goes beyond standard listings, showcasing every property with precision, creativity, and reach that others simply can't match. Coupled with an unparalleled attention to detail, from first enquiry to final move-in, we ensure every client and customer feels informed, supported, and confident. Simply put, we do the little things that make a big difference, setting us apart in every step of the property experience.



LONDON   STRATFORD   SOUTH WOODFORD   BUCKHURST HILL   LOUGHTON   EPPING   BEYOND

# Like what you see? Let's talk

Book your **FREE** valuation now



020 8102 1236

[london@butlerandstag.com](mailto:london@butlerandstag.com)

508 Roman Road, Bow, London, E3 5LU

[butlerandstag.uk](http://butlerandstag.uk)

IMPORTANT NOTICE - These particulars have been prepared in good faith and they are not intended to constitute part of an offer or contract. We have not performed a structural survey on this property and the services, appliances and specific fittings have not been tested. All photographs, measurements, floor plans and distances referred to are given as a guide and should not be relied upon.

BUTLER & STAG

