



4 Petersfield Crescent, Coulsdon

OIEO £585,000 Freehold



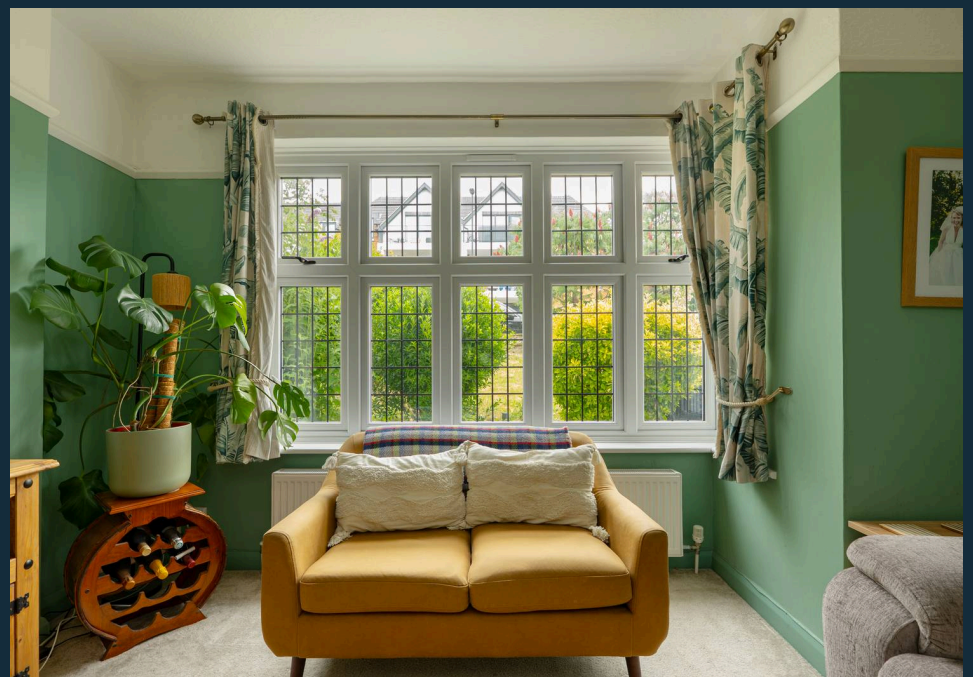
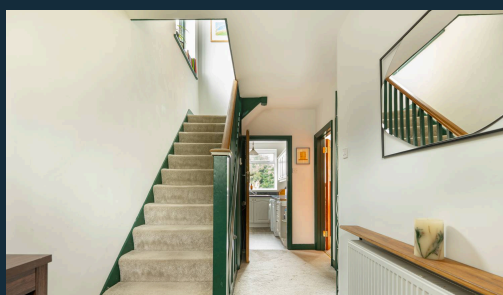
haboodle

Occupying a sought-after residential position in Coulsdon, this attractive Tudor-style three-bedroom semi-detached home is offered to the market **CHAIN-FREE** and presents an excellent opportunity for buyers looking to move without the complication of an onward chain. Beautifully maintained by the current owners, the property retains many of its original features while providing everything a modern family needs, from generous reception space to a large rear garden, a garage, and a private driveway.

The ground floor opens onto a welcoming entrance hall, leading to a bright front living room, complete with a beautiful bay window and a feature fireplace. To the rear is a separate dining room overlooking the garden, with French doors giving direct access, creating an ideal setting for family meals and entertaining, while the kitchen is set independently at the back of the property with views over the garden. Upstairs, you'll find three well-proportioned bedrooms and a family bathroom. The attached garage is currently used as a home gym but offers excellent versatility for



- › Three Well-Proportioned Bedrooms
- › CHAIN FREE
- › Two Reception Rooms
- › Large Rear Garden With Patio
- › Garage Currently Used As A Home Gym
- › Private Driveway Parking
- › Character Features Throughout
- › Close To Excellent Schools, Transport Links And Local Amenities

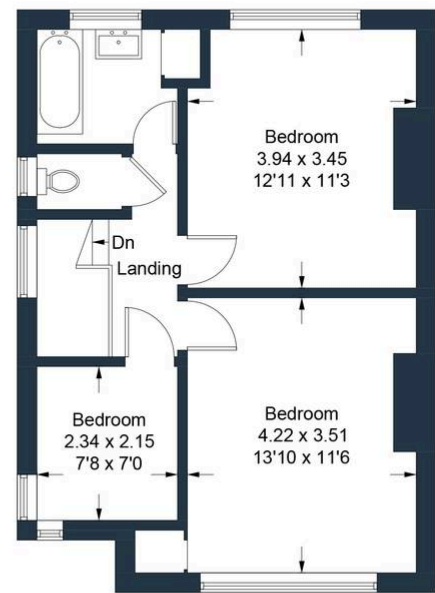


Petersfield Crescent, Coulsdon - CR5

Approximate Gross Internal Area = 107.1 sq m / 1152 sq ft
(Including Garage)



Ground Floor



First Floor

Illustration for identification purposes only, measurements are approximate, not to scale. Produced by Haboodle Estate Agents (ID1315793)



haboodle